

# JR TROJAN WEEKLY NEWSLETTER

September 13, 2019

## MARK YOUR CALENDAR

- Dead Line for Archery Registration , Friday , October 4<sup>th</sup>
- Books and Bagels first meeting, Thursday September 19<sup>th</sup>
- Sign Language club starts September 23<sup>rd</sup>



**East Lansing** Public Schools

*Amy Martin, Principal*

*John Atkinson, Assistant Principal*

517-333-7600, 517-337-6586 (Fax)

## MACDONALD MIDDLE SCHOOL FEATURED ON STORY BOARD

MMS was featured in the latest Story Board from Michigan Association of School Boards (MASB) as they showcased our Welcome Back Camp Week. We are very excited how we approached the beginning of the year based on building relationships between our students and staff as a precursor to our school year! View the Story Board here: <https://www.youtube.com/watch?v=3TqVBmRG8&feature=youtu.be>

## Have you ever wanted to try Archery?

All students are invited to participate in a 2-day clinic to learn the archery basics that are a part of the National Archery in Schools Program. The clinic will take place on October 8<sup>th</sup> and 9<sup>th</sup> from 6-7:30 p.m. at Marble Elementary. Registration forms are attached to this newsletter.

## "Books and Bagels," is back this year at MMS

The first meeting will be Thursday, September 19<sup>th</sup> after school at MMS.

## New to MMS: MacDonald Magazine Club

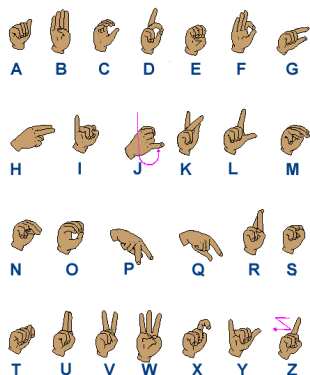
Club members will work together to create a print and digital magazine featuring a wide variety of fun types of writing and artistic expression. Club will be led by MSU English Education preservice teachers and faculty. Check it out on the attached flyer.

---

*Friday, September 23<sup>rd</sup>, MMS 7<sup>th</sup> and 8<sup>th</sup>  
grade band will be playing at the ELHS*

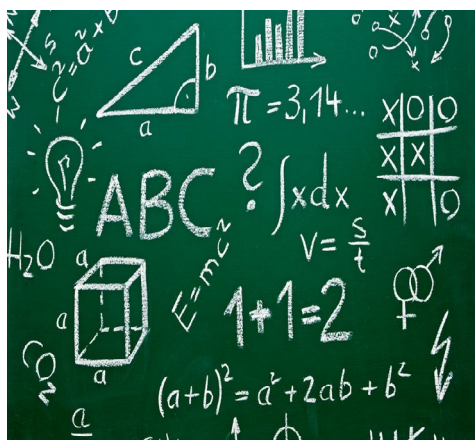
*Football game. Come support our Jr Trojans*

---



## DOES LEARNING SIGN LANGUAGE SOUND FUN?

Sign Language Club is back again this year and is open to all students. The club will meet on Mondays from 3-4 p.m. in project space 134. The first meeting is Monday, September 23<sup>rd</sup>. Sign up is in the main office. See the attached flyer.



## MMS MATH COUNTS CLUB

The MMS MathCounts club focuses on mathematical problem solving for all interested MMS students. We will meet on Wednesdays after school at MMS in PS135 until 4pm, beginning on Wednesday, September 18. In November, a team of 10 individuals will be selected to compete in the regional competition, which is held at MSU in February. For the past two years, the MMS team has placed first in our region and advanced to the state MathCounts competition. This program is staffed through the MSU Mathematics Department K-12 Outreach program, and will be led by MSU math major Jason Kenny. Questions may be directed to Mathematics Department Outreach Coordinator Ashley Ahlin at [ahlin@msu.edu](mailto:ahlin@msu.edu). More information about the national MathCounts program can be found at their website, [www.mathcounts.org](http://www.mathcounts.org).

All interested students must register in advance online:

<https://iota.math.msu.edu/k12-outreach/mathcounts-coaching-program/>

Registering does not obligate you to attend, but will ensure that you receive email updates and information about other math outreach opportunities.

We will announce the start date and the meeting room to those who have registered online, so please complete the online registration if you are interested in participating.

**Do you like ARCHERY?**

**Would you like to learn how to shoot a bow or improve your skills?**

**Would you like to compete in archery tournaments?**

**Here's an opportunity for you!**



East Lansing Elementary (grades 4-5), Middle-, and High School students are invited to participate in a 2-day "Try Archery" Clinic to learn the archery basics that are part of the National Archery in Schools Program (NASP). Trying archery at the clinic may help you decide if you would like to join the [East Lansing Archery Club Team](#).

#### **Goals of EL Archery Club Team:**

- Develop confidence and competence in target archery, a sport for life
- Give an extra-curricular opportunity for students
- Encourage friendships & growth in responsible personal/social behavior
- Introduce competition by attending tournaments
- Nurture a love of physical activity



#### **Clinic Details:**

- **Tuesday and Wednesday, October 8 - 9, 6:00 – 7:30 pm**  
*(With possible overflow date of Thursday, October 10 3:45 – 5:15 pm or 5:30-7:00 pm)*
- Clinic will take place at Marble School
- **Cost: \$20, Cash or check payable to Marble School with "Archery Clinic" in memo**
- **Deadline to sign up: Friday, October 4.** Registration forms may be returned to your school's office, or dropped off at Marble School. Label as "Archery Clinic."
- Registration form is on reverse side of this paper

#### **Basics of the EL Archery Club Team:**

- Practices occur on Mondays, Wednesdays, & Thursday afternoons/evenings starting in November; come when you can. We understand that archers may have conflicts with other activities. Practice times TBD
- Tournaments occur January – March (with a few in November this year)
- State Tournament in March for those who shoot a qualifying score at a prior tournament
- Nationals in May for those who qualify at the State Tournament
- Cost to join the team: \$75 with your own Genesis bow; + \$75 to rent a bow
- Uniforms, tournament fees, spirit wear will be discussed at the initial parent meeting



If you have questions about the Marble Archery Team, please contact me via email at:  
[casey.bain@elps.us](mailto:casey.bain@elps.us)



# East Lansing “Try Archery” Clinic



Return this form to your child’s school office or the Marble School office as soon as possible.

Label the envelope with: “Archery Clinic” ~ Cash or Check payable to Marble School.

Deadline: Friday, October 4, 2019

Student’s name: \_\_\_\_\_  
FIRST LAST

\_\_\_\_\_ Yes, I give my child permission to attend the East Lansing “Try Archery” Clinic: October 8-9,  
6:00 – 7:30 pm in the Marble School gym.

\_\_\_\_\_ Yes, my child is available to attend the “overflow date” of Thursday, October 10<sup>th</sup> at:  
Please circle one or both, if available at either time: 4:00 – 5:30 or 5:30 – 7:00

\_\_\_\_\_ Yes, I will provide transportation or other arrangement to get my child to Marble at the clinic start times  
each day.

\_\_\_\_\_ Camp fee of \$20 is enclosed. Checks payable to Marble School with “Archery Clinic” in memo area.

\_\_\_\_\_ Yes, I understand that dismissal is at 7:30 pm. On clinic days at 7:30pm, my child has permission to:

\_\_\_\_\_ be picked up by: \_\_\_\_\_

\_\_\_\_\_ walk/bike/own transportation home

\_\_\_\_\_ Other: \_\_\_\_\_

## PLEASE PRINT CLEARLY:

Parent/Guardian 1’s Name: \_\_\_\_\_

Parent/Guardian 1’s contact info that will be checked during the day/after school/evening:

Email: \_\_\_\_\_ Phone: \_\_\_\_\_

Parent/Guardian 2’s Name: \_\_\_\_\_

Parent/Guardian 2’s contact info that will be checked during the day/after school/evening:

Email: \_\_\_\_\_ Phone: \_\_\_\_\_



# **Join the MMS Sign Language Club**

Have fun with games and activities while learning a new language and learning about deaf culture. Best of all the club is FREE! Led by Ms. Pfaendtner, a sign language interpreter here at MMS, the sign language club will be an opportunity to learn more about the third most used language in the United States!

Sign Language Club (SLC) will meet Mondays from 3pm-4pm in project space room 134. First meeting is Monday, September 23rd.

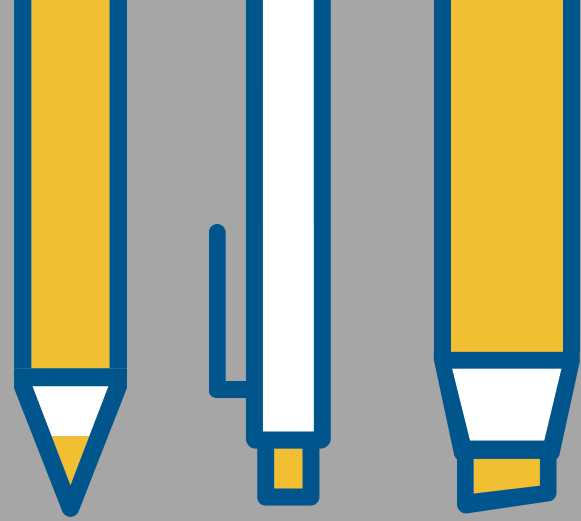
Sign up in the office with your name and Trojan Time teacher's name. (Please print so it can be read) You must sign up in the office to be able to participate. There is no limit to the number of people who can sign up!

Ride the bus? No problem! You can catch the late bus home after the meeting. You must be on the sign up list to be able to take the late bus.

If you have any questions email Ms. Pfaendtner at [kristen.pfaendtner@elps.us](mailto:kristen.pfaendtner@elps.us).



[WWW.SIGNLANGUAGEFORUM.COM/ASL/](http://WWW.SIGNLANGUAGEFORUM.COM/ASL/)



# MACDONALD MAGAZINE CLUB

**WEDNESDAYS & THURSDAYS, 3-4:10PM  
5-WEEK SESSION, SEPT. 18-OCT. 16  
MMS MEDIA CENTER**

Club members will work together to create a print and digital magazine featuring a wide variety of fun types of writing and artistic expression, such as poetry, articles, narratives, opinion pieces, photography, drawing, graphic design, and more. Club will be led by MSU English Education preservice teachers and faculty.

If interested, sign up in the office.

Questions? E-mail:

Dr. Jennifer VanDerHeide, [jvheide@msu.edu](mailto:jvheide@msu.edu)

Dr. Joanne Marciano, [marcian2@msu.edu](mailto:marcian2@msu.edu)

MSU Department of Teacher Education