

# Trojan Parentline

Tuesday, September 15, 2015 8:00 AM

**East Lansing High School**  
509 Burcham Drive  
East Lansing, MI 48823  
Telephone - 517.333.7500  
Fax: 517.333.7559

School Hours: 7:45 AM - 2:46 PM  
Office Hours: 7:00 AM - 4:00 PM

[Daily Schedule](#)

[Upcoming Events](#)

**High School Administration**  
**Coby Fletcher - Principal**  
coby.fletcher@elps.us  
517.333.7504

**Nancy Artman - Assistant Principal**  
nancy.artman@elps.us  
517.333.7502

**Nick Hamilton - Assistant Principal**  
nick.hamilton@elps.us  
517-333-7502

**Tom Hunt - Athletic/Activities Director**  
tom.hunt@elps.us  
517.333.7572

**Administrative Assistants**  
**Nikie Tabor - Main Office**  
nikie.tabor@elps.us  
517.333.7504

**Mary Fata - Main Office**  
mary.fata@elps.us  
517.333.7502

**Bonnie McGraw - Student Services**  
bonnie.mcgraw@elps.us  
517-333-7509

**Sue Bledsoe - Registrar**  
Susan.bledsoe@elps.us  
517.333.7508

**Laura Scott- Athletic/Activities and Copy Center**  
laura.scott@elps.us  
517.333.7499 or 517.333.7574

## General Information

**Attendance** - 517.333.7567 or  
elhsattendance.elhsa@elps.us  
Please leave your students name, grade and reason for absence.

**EXCEL** is a required academic period on Tuesday and Thursday.  
All students must be with a teacher, counselor or the media  
specialist during EXCEL.

**All Administrator, Faculty and Staff contact information** is  
available at elps.us by clicking on the [staff directory](#) link.

East Lansing High School is a **closed campus during lunch** for  
Freshmen and Sophomore students.

**Visitors** must report to the main office and receive a visitor's  
pass in order to access the building during school hours.

## Trojan T.U.R.F. - Trust, Unity, Respect and Fairness

Trojan T.U.R.F. is a philosophy utilized in all areas of interaction at East Lansing High School. Research indicates that when a school environment is positive and predictable, students feel safe, have better academic performance, higher test results and make better behavior choices. Schools also show a gain in instructional time and a reduction in discipline referrals and out of school suspensions.

# Principal's Letter

## Dear Parents and Guardians,

Greetings East Lansing families! It is a great privilege to welcome you to the 2015-2016 school year. We've had a wonderful start, and I continue to be impressed with the hard work our students and staff are putting into everything they do. We held class meetings during the first week of school and it was a pleasure to interact with our freshmen, sophomores, juniors, and seniors. They are the reason we are here!

If you walk into our building, you'll notice that we've been writing on our windows. As a staff, we want to let students know in as visible a way possible how much we appreciate them and how grateful we are for the potential they bring to us. We also want to give the students an opportunity to express the same things, so we will be checking out window markers from the main office starting the week of September 14th. If any parents wish to participate as well, we'd love to have you help us fill the school with positivity. Just ask for a window marker next time you drop in. I'm sure the students and staff would appreciate seeing your positive thoughts, too!

Finally, I want to continue to get the word out about the state changeover from the ACT to the SAT this year. While this test is very significant for juniors, we're making every attempt to give all of our students the opportunity to participate in the PSAT test, which will help them prepare to take the SAT when their time rolls around. As those opportunities become available, we will continue to include them on the website and in our communications with parents.

As always, I thank you for entrusting your children's education to us. I want you to know that we strive day in and day out to honor that trust.

Sincerely,



Coby Fletcher

## What's Inside...

New from Student Service.....	pg.3
Meet the Teacher Night.....	pg.4
AP Summary.....	pg.5
School News.....	pg.6
PSAT.....	pg.7
College Nights.....	pg.8
Teen After School Programs.....	pg.9
Parent Portal.....	pg.10
Test Dates.....	pg. 11

# Notes from Student Services

**College Connection-** On Wednesday, September 9<sup>th</sup> Senior Parent night was held by the student services staff in the Student Union. On Tuesday, September 8<sup>th</sup> the counselors also met with the Class of 2016 in the Student Union. The college application process, financial aid, testing, and graduation requirements were discussed. We have included important documents from these meetings on the [website](#).

**Direct to College Applications** (ex. MSU, CMU, WMU, LCC) – Students need to visit college websites and start filling out their application online. Once a student is ready for ELHS to send his/her transcript, he/she must request the transcript sent through parchment (online transcript service), and then fill out a router form and submit to student services. Once the router form is received, student services will complete the final steps needed for parchment to deliver the transcript to the college/university.

**Common Application** – Students need to visit [www.commonapp.org](http://www.commonapp.org) to start their college applications. Common app has a listing of all of the participating colleges on the main page of their website. A piece of the required common app will require that the student list his/her counselor. Once filled out, this generates an e-mail to his/her counselor that gives the counselor access to the application to fill out the recommendation and transcript. Once a student is ready for his/her counselor to fill out the recommendation page and send his/her transcript to common app, fill out a router form and submit to student services. Once received, the student's counselor will be able to complete their portion of the common app.

**ACT/SAT Scores** – Students must send their scores directly from ACT/SAT to the college/university that they are applying to. For ACT... visit [www.actstudent.org](http://www.actstudent.org). For SAT... visit [www.collegeboard.com](http://www.collegeboard.com).

**Letters of Recommendation** – When a student asks for a letter of recommendation to be written on his/her behalf, it is always wise for the student to have a resume or activities page handy to give to the recommender. This allows the person writing the letter to incorporate the student's other activities into the letter of recommendation.

**Scholarships** – A great resource for available scholarships is the scholarship area at the East Lansing High School Student Services page. Every opportunity the Student Services office receives is placed in this area for students to view. It is worth checking out!

**FAFSA** – The FAFSA (Free Application for Federal Student Aid) for the Class of 2016 is based on a family's wages from 2015. Student Services will be hosting financial aid workshops to help families understand the FAFSA and financial aid after the New Year. Stay tuned!

**Schedule Changes** - Schedule changes for the fall semester are now done. The only reason for a schedule change at this point is a catastrophic error in the schedule, or if a student needs a course to graduate in the spring.

**Counseling Appointments** - Students and parents wishing to make an appointment with the counselors just need to stop by or call Student Services (517-333-7505) to arrange a time and date that works.

**Information Verification Sheets** - If you have not yet returned your form to Student Services, please send it along with your student as soon as possible.

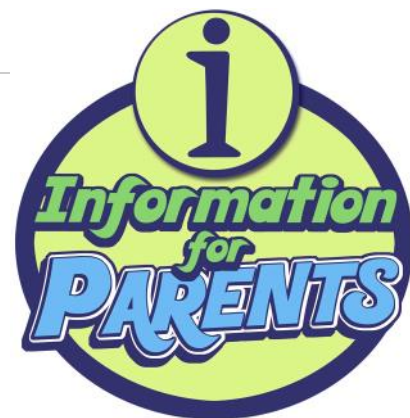


**EXAM  
RESULTS**

*Scholarships*

# Meet the Teacher Night

Wednesday, September 9, 2015 10:44 AM



## **Welcome To ELHS Meet the Teachers September 16th**

**Please follow your student's schedule  
As follows with 6 minutes of passing time between  
each class:**

<b>1<sup>st</sup> hour</b>	<b>7:00 – 7:10</b>
<b>2<sup>nd</sup> hour</b>	<b>7:16 – 7:26</b>
<b>3<sup>rd</sup> hour</b>	<b>7:32 – 7:42</b>
<b>4<sup>th</sup> hour</b>	<b>7:48 – 7:58</b>
<b>5<sup>th</sup> hour</b>	<b>8:04 – 8:14</b>
<b>6<sup>th</sup> hour</b>	<b>8:20 – 8:30</b>

**Thank you for a great night  
Filled with class!**

**MISSION STATEMENT  
Nurturing each child  
Educating all students  
Building world citizens**

# AP Summary - 2015 Testing Period

Tuesday, August 25, 2015 8:19 AM

Total AP Students in Your School: **282**

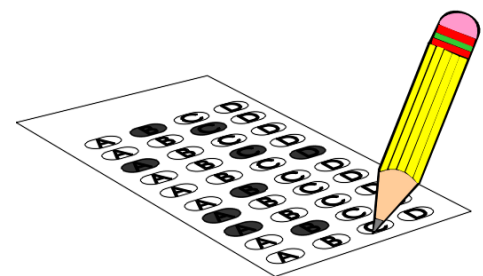
School Totals for this View	5	4	3	2	1	Total Exams
Number of Exams	124	162	161	96	25	568
Percentage of Total Exams	22	29	28	17	4	100
Number of AP Students	81	127	125	85	24	

Subject Totals	5	4	3	2	1	Total Exams
Music Theory				1		1
Studio Art: 2-D Design Portfolio			1	1		2
Studio Art: 3-D Design Portfolio			2	2		4
Studio Art: Drawing Portfolio		5	6	7		18
English Language and Composition	18	20	14	12	1	65
English Literature and Composition	3	8	12	4	1	28
European History	4	6	10	3	1	24
Macroeconomics		1	1		1	3
Microeconomics	1	1				2
Psychology		1	1		4	6
United States Government and Politics		1	1	2	1	5
United States History	11	24	16	7	3	61
Calculus AB	36	23	19	7	8	93
Calculus BC	19	9	8		1	37
Computer Science A	2					2
Statistics	5	7	7	4	1	24
Biology	2	8	15	6	1	32

Cont'd in next column

Total AP Students in Your School: **282**

Subject Totals	5	4	3	2	1	Total Exams
Chemistry	2	4	10	8		24
Environmental Science	3	7	4	3		17
Physics C: Mechanics	5	1	1			7
Physics 1	6	19	19	28	2	74
Chinese Language and Culture	2	1				3
French Language and Culture	4	4	5			13
Spanish Language and Culture	1	12	9	1		23



# Homecoming

Tuesday, August 25, 2015 8:27 AM

## September 25, 2015

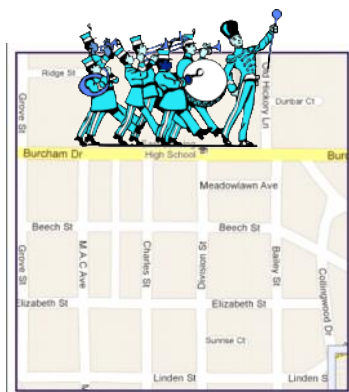
Parade Begins at 5:30 pm  
Game time: 7:00 pm ELHS vs. Holt

### Parade Route

1. Leave the bus loop
2. Go south on Old Hickory
3. West on Burcham
4. South on MAC
5. East on Albert
6. North on Bailey
7. Return to high school

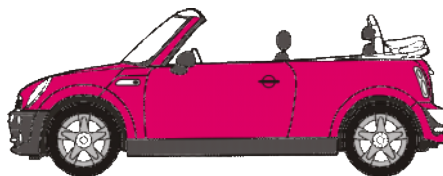
## September 26, 2015

Homecoming Dance  
7-10 pm in the ELHS Student Union  
\$8 in advance and \$10 at the door.



## Calling All Convertibles!

If you have a convertible and are willing to drive it in the Homecoming Parade on Friday, September 25, please contact Rob Thompson at (517) 819-7259 or via email at [rthomp2004@aol.com](mailto:rthomp2004@aol.com) to reserve your spot. The lineup for the parade is at 4:30 in the bus loop at the high school. The parade begins at 5:30. The parade takes about 45 minutes to an hour.



# Parent Council

## Parent Council News

Please join us for our first meeting of the year on Tuesday, September 15 in the ELHS Hub. We will host an open discussion forum from 6-6:30pm, followed by the regular business meeting from 6:30-8pm. Hope to see you there!



**Parent Conferences** are October 20th from 6-9pm and October 22nd from 2-4pm and 6-9pm. Look for an eBlast soon to sign up online for conference times!

## Michigan Math Prize Competition

The Michigan Mathematics Prize Competition is sponsored by the Michigan Section of the Mathematical Association of America (MAA) to encourage students to develop their interests and abilities in mathematics. The students with the top 100 scores in the two parts of the competition are honored at an awards program. Approximately \$20,00 in scholarships ranging from at least \$250 to \$2,500 will be awarded this year.

Part I of the MMPC is open to all students in Michigan high schools. This exam consists of 40 multiple-choice questions involving topics from high school mathematics.

From over 6,000 participants in Part I, the top 1,000 students are invited to take Part II of the MMPC. On Part II of the exam, students work on five challenging problems and write their solutions providing full justification and proof of their claims.

The MMPC Part I takes place on October 6, 2015. Students wishing to participate, should turn in the [registration form](#) to Ms. Tabor, along with \$5 by September 1



Wednesday, August 19, 2015 12:59 PM



Wednesday, August 19, 2015 12:59 PM



# PSAT

Wednesday, August 19, 2015 12:59 PM

Form available at <http://elps.us/downloads/news/psat.pdf>



East Lansing  
Public Schools 509 Burcham, East Lansing, MI 48823

To The Parents of East Lansing High School 10<sup>th</sup> and 11<sup>th</sup> grade students:

**The PSAT will be given on Wednesday October 14, 2015 at ELHS.**

The PSAT/NMSQT is the qualifying test that students must take to enter National Merit Scholarship Corporation (NMSC) competitions for college scholarships. This is also the practice test for SAT, the college readiness test given to all Michigan 11<sup>th</sup> grade students in the spring.

There is a fee of \$15.00 per student for this test. **Students planning on taking the PSAT must register in the main office with Mrs. Tabor by Friday, September 25, 2015. The \$15.00 fee is due on the date of registration. Please make checks payable to ELPS.**

If you have any questions or concerns, please telephone my office Monday through Friday 7:30 a.m. – 4:00 p.m. at 333-7504.

Sincerely,

Coby Fletcher  
Principal

\*\*\*\*\*

Student Name \_\_\_\_\_ Grade \_\_\_\_\_

Fee of \$14.00 paid by \_\_\_\_ check \_\_\_\_ cash

Student Signature \_\_\_\_\_ Date \_\_\_\_\_

For more information:  
[www.collegeboard.com/psatdownloads](http://www.collegeboard.com/psatdownloads)

Coby Fletcher, Principal, East Lansing High School

NURTURING EACH CHILD • EDUCATING ALL STUDENTS • BUILDING WORLD CITIZENS

## PSAT Important Information

Tuesday, August 25, 2015 8:45 AM

### Test Design

The redesigned PSAT/NMSQT and the PSAT 10 are excellent practice for the SAT and offer a chance to monitor student learning.

### Check In and Focus

The PSAT/NMSQT and PSAT 10 are tightly aligned with the redesigned SAT and provide educators and students with the chance to check in on student progress. Both tests will support all students with a clear focus on the skills and knowledge that matter most for college and career success. Educators will be able to:

- Measure and follow student performance.
- Pinpoint areas for development.
- Prepare students for the redesigned SAT.

The PSAT/NMSQT and the PSAT 10 will focus on the knowledge and skills that current research shows are most essential for college and career readiness and success. The tests will reflect the work students are doing in classrooms across the country and around the globe.

### What's New?

When students open their PSAT/NMSQT test books in fall 2015 (and their PSAT 10 test books in spring 2016), they'll encounter tests that are more focused and useful than ever before. The redesign of the SAT Suite of Assessments is centered on [key content changes](#).

### Inside the Tests

Find out what kinds of questions will be asked on the redesigned PSAT/NMSQT and the PSAT 10 and which skills and knowledge areas they'll test:

- [Reading Test](#)
- [Writing and Language Test](#)
- [Math Test](#)

### Content Alignment

The tests are aligned with the PSAT 8/9 and the SAT. All of these tests focus on the same domain of knowledge and skills. As students progress from grade to grade, the tests will keep pace, matching the scope and difficulty of work found in the classroom. [Learn more about the content alignment of the SAT Suite of Assessments](#).

### Scoring Changes

The redesigned PSAT/NMSQT and the PSAT 10 will be scored differently from the way the PSAT/NMSQT has been scored in the past. A few changes:

- The tests will share a common score scale with the PSAT 8/9 and the SAT because the content is so tightly aligned.
- Subscores and cross-test scores will be added for greater insight.
- There won't be a penalty for guessing.

[Find out more about scoring.](#)

### Compare Test Specifications

How does the timing and structure of the redesigned PSAT/NMSQT and the PSAT 10 compare to that of the pre-2015 PSAT/NMSQT? [View tables.](#)

[Read the full test specifications for the redesigned SAT \(.pdf/2.65MB\).](#)

# College Nights

Tuesday, August 25, 2015 8:50 AM



## LANSING COMMUNITY COLLEGE - COLLEGE NIGHT 2015

- [When](#)
  - [Where](#)
  - [Colleges](#)
  - [Prepare](#)
  - [Representatives](#)
- College Night '15  
**Thursday, October 8, 2015**  
5:30 - 7:00 PM

[Main Campus](#)

[Gannon Building](#)

422 North Washington Square

Lansing, MI 48933

[Map](#)

Lansing Community College is pleased to announce our college night for fall 2015. We cordially invite you to participate in our college night event at LCC, Thursday, October 8, 2015 from 5:30 to 7:00 p.m. You will have the opportunity to visit with representatives from 50+ colleges and universities from around the state.

High school students, parents, families, current LCC students and community members are all welcome! Free parking is available in any LCC designated parking area and any floor of the Gannon Ramp located on the 600 block of N. Grand Ave. Also, city meters are free after 6:00 pm. Please join us in our newly renovated Gannon Building for this exciting college night event.

## CLINTON COUNTY COLLEGE NIGHT

The annual **Clinton County College Night** will be held on **Wednesday, September 23, 2015**, from **6:30 p.m. - 8:00 p.m.** at Clinton County RESA in St. Johns.

Students in grades 8-12 are welcome and encouraged to attend this event. Students will have the opportunity to meet with representatives from many colleges, universities, community colleges, training schools, and branches of the military. Presenters will be set up at their respective tables in an open house format, and students/parents will be able to visit their institutions of interest.

Participants also have the option of attending a breakout session.

- **Financial Aid** - Featuring Jim Owens from Lansing Community College's Financial Aid Office. Two sessions will be held—one being from 6:45 to 7:15 p.m. and a repeat session from 7:30 to 8:00 p.m.
- **Transitioning from High School to College: A Guide for Parents and Students** - The transition from high school to the first year of college can be both exciting and nerve wracking for students and parents alike. Hear from parents and recent college graduates who have lived through this transition, along with tips for parents and students on how to prepare in the months leading up to the freshman year of college. Included will be discussion on what college graduates wish they would have known ahead of time as well as an open question and answer session. Two sessions will be held one being from 6:45 to 7:15 p.m. and a repeat session from 7:30 to 8:00 p.m.

Here are a couple of sample questions which will be discussed:

- What if a student does not want to go to college?
- Describe some of the biggest differences between high school and college life.
- What should students know that isn't covered in orientation?

It is never too early to begin the planning process for post high school graduation. Parents are also welcome to attend College Night with their son or daughter.

Clinton County RESA is located at 1013 South US 27 in the Southpoint Mall. Any questions may be addressed to Jennifer Branch, Career Education Coordinator at Clinton County RESA at 989-224-6831.

# After School Options

Tuesday, August 25, 2015 9:15 AM

Students not working with a faculty member, or involved in after school activities are required to leave the premises. We know it is often a hardship for students who do not drive and/or whose parents are unable to pick them up until later in the day. Below is an option which works well for many of our students.

## T.A.S.C.

### Teen After School Center

A cooperative program between the East Lansing Public Library and All Saints Episcopal Church

**Beginning September 8, 2015**

**Monday & Tuesday 3 - 5:30 pm**

All Saints Episcopal Church

800 Abbot Road Behind the practice football field

Contact: Laura Kuntz 517.351.7160

[pastorlaurak@gmail.com](mailto:pastorlaurak@gmail.com)



Teens of all backgrounds and faiths are welcome and embraced at our church! This is not a religious program; it is simply an offering to the community



**Wednesday & Thursday 3 - 5:30 pm and Friday 3 - 5 pm\***

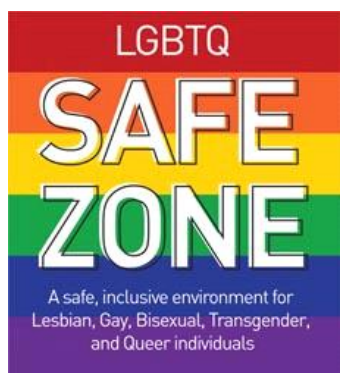
East Lansing Public Library

950 Abbot Road Behind the practice football field

Contact: Jessica Lee-Cullin 517.319.6840

[jleecul@cityofeastlansing.com](mailto:jleecul@cityofeastlansing.com)

\*When library remodeling begins in November, ELPL staff will run their teen programs at All Saints Episcopal on Wed/Thurs/Fri from 3 - 5 pm (barring preexisting reservations of church space)  
Thank you in advance for your patience during this time



[Facebook.com/elplteens](https://www.facebook.com/elplteens)



[Instagram.com/elplteens](https://www.instagram.com/elplteens)



[Twitter.com/elplteens](https://www.twitter.com/elplteens)

**All Are Welcome!**

# How to Create a Parent Portal Account

Wednesday, September 2, 2015 2:23 PM

## How to Create a Parent Portal



## Parent - How to Create a Parent Portal

Step 1. Obtain an access ID & password (1 for each student) from your school's secretary or librarian

Parents:

To create your Single Sign-on account, please go to <http://ps.elps.k12.mi.us/public> and click on "Create Account" towards the bottom of the page. The portal will ask you to put in your First Name, Last Name, Email, Desired Username, and Password (you will be able to make up your own user name and password for ease of use). Next, complete the "Link Students to Account" section. Enter your child(ren)'s names and your Access ID and Access Password for each child. Make sure you are entering your Access ID and Access Password for each child and not the Student's Username and Student Web Password. Your Access ID and Access Password for each child is located in the middle of this Single Sign-on Report - just below the section. There is a limit of 7 children per login.

*Important: this is not a login*

Access ID: Cooper426  
Access Password: autumn

*See steps below to continue.*

Continue adding other children from your family (grades 5-12 if needed). When completed, press the "Enter" button on the bottom left hand corner of your current page. Your Access ID and Password is unique to your child, please keep these logins confidential so that only you and your child(ren) can access their information.

Step 2. Go to [www.ELPS.us](http://www.ELPS.us) > select PowerSchool under Parent Information

Step 3. Select Create Account

PowerSchool

Parent Sign In

Username  
Password

Forgot your password?

Sign In

Create an Account

Create a parent account that allows you to view all of your students with one account. You can also manage your preferences. Learn more

Create Account

Step 4. Enter first name, last name, email, username & password

Step 5. Under Link Students to Account, enter student info (including access ID & password) and click Enter

PowerSchool

Create Parent Account

First Name  
Last Name  
Email  
Desired Username  
Password  
Re-enter Password

Password must:  
-be at least 6 characters long

Link Students to Account

Enter the Access ID, Access Password, and Relationship for each student you wish to add to your Parent Account

Student Name	Access ID	Access Password	Relationship
1. [Name]	Cooper426	autumn	Choice
2. [Name]			Choice
3. [Name]			Choice
4. [Name]			Choice
5. [Name]			Choice
6. [Name]			Choice
7. [Name]			Choice

Enter

## ELHS Testing Dates for the 2015-16 School Year

Wednesday, September 9, 2015 12:15 PM

<b>OCTOBER</b>			
All	ELHS	MMP Competition, Part I	Tuesday, October 6, 2015
9,10,11	ELHS	PSAT/NMSQT	Wednesday, October 14, 2015
<b>DECEMBER</b>			
All	ELHS	MMP Competition, Part II (Only eligible students from Part I)	Wednesday, December 9, 2015
<b>JANUARY</b>			
ALL AP	ELHS	<a href="#">AP EXAM REGISTRATION FORMS AND FEES pay in main office</a>	Month of January, 2016
All	ELHS	HS 1st Semester Exams	January 20,21,22
<b>FEBRUARY</b>			
All	ELHS	AMERICAN MATHEMATICS COMPETITIONS (AMC)	Tues., Feb 2 or Wed., Feb 17
11th	ELHS	<a href="#">REQUIRED SAT PRE-BUBBLE SESSION - EXCEL</a>	TBD
11th	ELHS	<a href="#">REQUIRED SAT PRE-BUBBLE SESSION - EXCEL</a>	TBD
11th	ELHS	<a href="#">REQUIRED SAT PRE-BUBBLE SESSION - EXCEL</a>	TBD
<b>APRIL</b>			
11th & eligible 12th	ELHS	SAT	Tuesday, April 12, 2016
	ELHS	ACT WORKKEYS	Wednesday, April 13, 2016
9th & 10th	ELHS	PSAT	Tuesday, April 12, 2016
11th & eligible 12th	ELHS	M-STEP (MICHIGAN SCIENCE , MICHIGAN SOCIAL STUDIES)	TBD April 11 - 29
All AP	ELHS	<a href="#">REQUIRED AP PRE-BUBBLE SESSION - EXCEL A - K</a>	<a href="#">Tuesday, April 19, 2015</a>
All AP	ELHS	<a href="#">REQUIRED AP PRE-BUBBLE SESSION - EXCEL L - Z</a>	<a href="#">Thursday, April 21, 2015</a>
All AP	ELHS	<a href="#">REQUIRED AP PRE-BUBBLE SESSION - EXCEL</a>	<a href="#">Tuesday, April TBD</a>
All AP	ELHS	<a href="#">REQUIRED AP PRE-BUBBLE SESSION - EXCEL</a>	<a href="#">Thursday, April TBD</a>
<b>MAY</b>			
All AP	ELHS AND MSU	ADVANCED PLACEMENT EXAMS	Monday, May 2 - Friday, May 13, 2016
<b>June</b>			
All	ELHS	HS 2nd Semester Exams	June 8.9.10