

# Trojan Parentline

February 15, 2020

## **East Lansing High School**

509 Burcham Drive

East Lansing, MI 48823

Phone: 517-333-7500

Fax: 517-333-7559

Attendance Line: 517-333-7567

School Hours: 7:45am - 2:34pm Office

Hours: 7:00am - 4:00pm

## **General Information:**

Attendance: 517-333-7567

[elhsattendance.elhsa@elps.us](mailto:elhsattendance.elhsa@elps.us)

Please leave your students name, grade and reason for absence.

EXCEL is a required academic period on Tuesday and Thursday. All students must be with a teacher, counselor or the media specialist during EXCEL.

Visitors must report to the main office and receive a visitor's pass in order to access the building during school hours.

East Lansing High School is a closed campus during lunch for freshmen and sophomore students.

[Contact information](#) for high school employees is available on our website.

## **Trojan T.U.R.F. - Trust, Unity, Respect and Fairness**

Trojan T.U.R.F is a philosophy utilized in all areas of interaction at East Lansing High School. Research indicates that when a school environment is positive and predictable, students feel safe, have better academic performance, higher test results and make better behavior choices. Schools also show a gain in instructional time and a reduction in discipline referrals and out of school suspensions.

## **High School Administration**

### ***Andrew Wells - Principal***

[andrew.wells@elps.us](mailto:andrew.wells@elps.us)

517-333-7504

### ***Matthew Morales - Assistant Principal***

[matthew.morales@elps.us](mailto:matthew.morales@elps.us)

517-333-7502

### ***Ashley Schwarzbek-Assistant Principal***

[ashley.schwarzbek@elps.us](mailto:ashley.schwarzbek@elps.us)

517-333-7502

### ***Nikki Norris-Athletic/ Activities Director***

[nicole.norris@elps.us](mailto:nicole.norris@elps.us)

517-333-7572

---

## **Administrative Assistants**

### ***Nikie Tabor - Main Office***

[nikie.tabor@elps.us](mailto:nikie.tabor@elps.us)

517-333-7504

### ***Mary Fata - Main Office***

[mary.fata@elps.us](mailto:mary.fata@elps.us)

517-333-7502

### ***Bonnie McGraw - Registrar***

[bonnie.mcgraw@elps.us](mailto:bonnie.mcgraw@elps.us)

517-333-7508

### ***Janet Wyant - Student Services***

[janet.wyant@elps.us](mailto:janet.wyant@elps.us)

517-333-7509

### ***Laura Scott - Athletic/ Activities Secretary and Copy Center***

[laura.scott@elps.us](mailto:laura.scott@elps.us)

517-333-7574 or 517-333-7499

The page is framed by a decorative border of blue and white snowflakes of various sizes, scattered around the edges of the text.

February 15, 2020

Dear Parent/Guardian:

As the second semester begins, our students are in full swing and eager to finish the second half of the year. Our team wants to acknowledge the academic and social demands that students experience daily. We want to inform our East Lansing High School families of the social-emotional supports we provide our students. We recognize that offering various systems of support to our students is vital for their emotional well-being while at school.

Our focus is to continue mental health initiatives that have provided great support to our students. The Transforming Research into Action to Improve the Lives of Students (TRAILS) is a program designed to develop skill-based coping mechanisms through Cognitive Behavioral Therapy (CBT). Students have the opportunity to participate in the nine-week curriculum offered through the Student Services department.

In our efforts to assist all staff to develop appropriate recognition and response to the mental health needs of our students, training will begin for the Youth Mental Health First Aid program (YMHFA). This training provides a general framework for our staff to properly support the student body.

Most recently, emotional support dogs visited ELHS to help students decompress. Emotional support dogs will be available frequently for the remainder of the year. We want to thank Buddy's PALS (Pet Assisted Learning Services) for helping students navigate their social-emotional needs throughout the semester.

Additionally, we appreciate our collaboration with Ele's Place grief and loss organization. Ele's Place has established a group in our school that meets weekly to discuss feelings, emotions, and challenges related to losing a loved one.

Lastly, the Student Services Department is creating a wellness room where individual students can relax and refocus when dealing with stressors that inhibit their ability to be in class. We hope that this outlet is beneficial to our student's emotional well-being.

In closing, you will find website information to the TRAILS program, Youth Mental Health First Aid, Buddy's Pals, and Ele's Place. We are excited to continue our efforts to reach all of our students in the East Lansing Family.

<https://trailstowellness.org/>

<https://www.mentalhealthfirstaid.org/population-focused-modules/youth/>

<https://www.facebook.com/BuddysPALS123/>

<https://www.elesplace.org/>

Matt Morales  
Associate Principal  
East Lansing High School  
(517) 333-7503



# Student Services - February 2020



## **Scheduling**

Dates and information for scheduling for the 2019-2020 school year will be released in the next few weeks. Rest assured, students will have schedules in hand before we release for summer.



## **CACC Applicants for 2020/2021 School Year**

Students that applied to the Capital Area Career Center should know if they have been accepted into their program of choice after spring break.



## **Test Out Materials**

Test out applications will be available on the student services website after spring break.



## **The Early College**

The Early College at LCC is accepting applications for next year's class which are due to student services by March 20<sup>th</sup>.



### Senior Parents

The end of the school year is coming up fast so please do not let your student get complacent. Keep encouraging them to work hard in their classes. Colleges do take into account your students 8th and final semester grades. They are almost there!



**Scholarship Opportunities...** (Students should start looking and applying as early as 9<sup>th</sup> grade)

- College/Universities Scholarship/Financial Aid website... check out the different offering that your intended school offers by visiting their website.
- Student Services website... all scholarships that student services receives are posted and updated on a weekly basis.
- Scholarship Search Engines
  - [www.fastweb.com](http://www.fastweb.com)
  - [www.studentscholarships.org](http://www.studentscholarships.org)
  - [www.collegexpress.com](http://www.collegexpress.com)
  - [www.mycollegedollars.com](http://www.mycollegedollars.com)
  - [www.scholarships.com](http://www.scholarships.com)

NOTE – The above are just a few of the many scholarship search sites that are out there... there are many others. You should **NEVER** have to pay money to search or apply for a scholarship.



# More News - February 2020

**SAT**

CollegeBoard

**SAT** – Register for the First SAT of 2020. Saturday 03/14/2020.

[https://collegereadiness.collegeboard.org/sat/register/march-2020?SFMC\\_cid=EM269658-&rid=47239026](https://collegereadiness.collegeboard.org/sat/register/march-2020?SFMC_cid=EM269658-&rid=47239026)



**Attendance** - A note from the Attendance Office: Absences can only be excused within 48 hour of the absence. A note in your student's planner is the easiest way to communicate any prearranged appointments. You can also e-mail [mary.fata@elps.us](mailto:mary.fata@elps.us) or call the attendance line at 517-333-7567 and leave a message.



**Daily Announcements** - Do you want to keep up on the daily happenings at East Lansing High School? Check out the daily announcements on the website! <https://elps.us/our-schools/east-lansing-high-school/studentparent-resources/daily-announcements/>



**NATIONAL  
HONOR SOCIETY**

National Honor Society -  
invitations and applications to join  
NHS will be e-mailed out in mid-  
February.

The invitation and application to join NHS goes to:

All upcoming juniors and seniors who have attended East Lansing High School for at least one semester and have a minimum G.P.A. of 3.500 are eligible. Any upcoming senior who applied last year but was not inducted may apply again if they still have the minimum G.P.A. of 3.500.

- Interested students must fill out the application and complete eight community service hours before April 17th.
- Applications are due by April 17th at the end of the school day. Turn in applications in room 610.
- The Induction ceremony will be on April 28th at 6:30 pm in the Student Union.
- Additional NHS applications will be available in room 610 and students can pick them up between classes.
- Questions can be directed to Sheri Seyka at [sheri.seyka@elps](mailto:sheri.seyka@elps)

*Winter  
Dance*

Winter Dance was held Saturday February 8 from 7:00 – 10:00 P.M. in the High School Student Union. Thank you parent volunteers for chaperoning. We appreciate your presence.





### Visual Art Department

The Visual Art Department is excited to announce that the **Grand Prize \$500 winner for the 2020 MLK HOLIDAY ART CONTEST**, was our very own [Eaman Ali](#). Eaman's artwork and written artist statement had to incorporate the following criteria for consideration: ***"There Comes a Time When Silence is Betrayal"*** was given the top prize in the high school category.



## East Lansing Class Looks to Keep Darkroom Photography Alive

Monday, February 10, 2020, 4:30 pm

By:

Emily Joan Elliott



*From left: TreSean Hoskins, Tobias Rule, Kailee Borroum and Jacqui Carroll in the darkroom (photos by Gary Caldwell)*

For more info go to this link:

<https://eastlansinginfo.org/content/east-lansing-class-looks-keep-darkroom-photography-alive>





## East Lansing High School Important Dates

- February 26 – Late Start – 9:45 a.m.
- March 8 – Top Scholar
- March 12 – Parent Teacher Conferences 2-4 and 5-7
- March 17 - Parent Teacher Conferences 2-4 and 5-7
- March 18 – Late Start – 9:45 a.m.
- March 20-22 – Spring Musical
- April 3-10 – Spring Break
- April 14,15,16 – MME for 11<sup>th</sup> grade students (SAT, ACT WorkKeys, MStep)
- April 14 – 9<sup>th</sup> and 10<sup>th</sup> Grade PSAT
- April 25 – Prom MSU Spartan Stadium
- April 27 – Kiwanis student of the month Luncheon
- April 28 – Art Show in Hub
- May 4 – May 15 – AP Exams
- May 18 – Senior Graduation Excel
- May 19 – Underclass Awards
- May 19 – Graduation Performance Auditions in room 115 at 2:30 p.m.
- May 20 – Art Field Trip
- May 20 - Senor Graduation Cards Due
- May 21 – Yearbook Release in Student Union after school

# 2019-20 Test Dates



EAST LANSING HIGH SCHOOL 2019-2020 TENTATIVE TEST DATES			
GRADE	WHERE	TEST	DATE
<b>OCTOBER</b>			
All	ELHS	MMP Competition, Part I	Tuesday, October 8th
All AP	ELHS	<a href="#">AP EXAM REGISTRATION FORMS AND FEES</a> pay in main office	Tuesday, October 15th
9,10,11	ELHS	PSAT/NMSOT	Wednesday, October 16th
<b>DECEMBER</b>			
All	ELHS	MMP Competition, Part II (Only eligible students from Part I)	Wednesday, December 4th
<b>JANUARY</b>			
All	ELHS	<a href="#">AMERICAN MATHEMATICS COMPETITIONS (AMC) Registration</a>	January
All	ELHS	HS 1st Semester Exams	January 15,16,17
<b>FEBRUARY</b>			
All	ELHS	AMERICAN MATHEMATICS COMPETITIONS (AMC)	
<b>APRIL</b>			
11th & eligible 12th	ELHS	SAT	Tuesday, April 14
	ELHS	ACT WORKKEYS	Wednesday, April 15
11th & eligible 12th	ELHS	M-STEP (MICHIGAN SCIENCE , MICHIGAN SOCIAL STUDIES)	Thursday, April 16
9th & 10th	ELHS	PSAT	Tuesday, April 14
All AP	ELHS AND MSU	ADVANCED PLACEMENT EXAMS	Monday, May 4-15
<b>June</b>			
All	ELHS	HS 2nd Semester Exams	June 3,4,5





# AP Exam Information ...

Week 1	7:45 A.m. Most Exams in Aux Gym	12:00 Noon P.M. Most Exams in Aux Gym
<b>Monday, May 4, 2020</b>	United States Government and Politics	<b>Physics C: Mechanics</b>
	Studio Art Library Lab- receive portfolios	<b>2:00 p.m. Physics C: Electricity and Magnetism—</b> You must see Mrs. Tabor to get a join code and fill out this form and Pay prior to October 15 <sup>th</sup> .
<b>Tuesday, May 5, 2020</b>	Calc AB	German Language and Culture - – You must see Mrs. Tabor to get a join code and fill out this form and Pay prior to October 15 <sup>th</sup> .
	Calc BC	
<b>Wednesday, May 6, 2020</b>	English Literature and Composition	European History
		Physics 2: Algebra-Based
<b>Thursday, May 7, 2020</b>	Chemistry	<b>Japanese Lang and Culture—</b> You must see Mrs. Tabor to get a join code and fill out this form and Pay prior to October 15 <sup>th</sup> .
	Spanish Lit and Culture	Physics 1: Algebra-Based
<b>Friday, May 8, 2020</b>	United States History	Computer Science A
	Studio Art — last day for coordinators to submit digital portfolios – Library Lab	

Week 2	7:45 A.m. Most Exams in Aux Gym	12:00 Noon P.M. Most Exams in Aux Gym
<b>Monday, May 11, 2020</b>	Biology	Chinese Lang and Culture – You must see Mrs. Tabor to get a join code and fill out this form and Pay prior to October 15 <sup>th</sup> .
		Environmental Science
<b>Tuesday, May 12, 2020</b>	Spanish Lang and Culture	Psychology
<b>Wednesday, May 15, 2020</b>	English Language and Composition	Microeconomics
<b>Thursday, May 16, 2020</b>	Comparative Government and Politics	Macroeconomics— You must see Mrs. Tabor to get a join code and fill out this form and Pay prior to October 15 <sup>th</sup> .
	World History: Modern	
<b>Friday, May 17, 2020</b>	Computer Science Principles	Statistics
	French Language and Culture	



## Half Day and Exams Schedule 2019-2020

September 25<sup>th</sup> – Late Start

**October 17<sup>th</sup> – Half Day – Periods 1,2,3**

**October 22<sup>nd</sup> – Half Day – Periods 4,5,6**

October 23<sup>rd</sup> – Late Start

January 15<sup>th</sup> – Exam Day – Periods 1,2

January 16<sup>th</sup> – Exam Day – Period 3,4

January 17<sup>th</sup> – Exam Day – Periods 5,6

**February 12<sup>th</sup> – Half Day Periods 1,2,3**

**February 17<sup>th</sup> – Half Day Periods 4,5,6**

March 18<sup>th</sup> – Late Start

June 3<sup>rd</sup> – Exam Day – Periods 1,2

June 4<sup>th</sup> – Exam Day – Periods 3,4

June 5<sup>th</sup> – Exam Day – Periods 5,6

### Half Day

7:45 – 8:44

8:52 – 9:51

9:59 – 11:00

### Exam Day

7:45 – 9:27

9:37 – 11:20

Late Start Day begins at 9:45 am





# Recycle

## with the ELHS Visual Art Department

The Visual Art Department is looking to make creative use of your recycled, soon to be discarded, or long forgotten treasures.

We are in need of the following items, *listed in order of necessity*:

- **Newspaper is BADLY needed**, (without the advertisements on high gloss, nonabsorbent paper preferred.)
- **Styrofoam and Plastic, almost flat, trays**, used to packaging frozen meals and take-out. **(Used for paint palettes.)** *Believe it or not, we are completely out!*
- **Old Towels, all sizes.** (Used to keep clay moist and clean-up of inks etc...)
- **Blow dryers.** They are used in all classes.
- **Irons** for batiking.
- **Medium sized plastic containers with lids for holding dyes, slips, and paint.** Pint size yogurt, sour cream or cottage cheese type containers would be great.
- **Small, plastic containers with lids.** We are really in need of small sizes such as Philadelphia cream cheese, feta cheese, etc..
- **Tea tins**, for making pin-hole cameras.
- **Small crock pots** for melting wax for batik.
- **Larger crock pot**, the older are best because *we cannot have metal rims.* (Used for acid baths in jewelry.)
- **Old jewelry**, beads, or stones. (Dismantled for jewelry and fiber, and multi-media ceramic projects.)
- **Pillow** and quilt makings.

Please drop off items to the main office or an art classroom at your convenience. Label "For Art Department".

Thank you!

## Advanced Placement Information

### Current Year Summary

**East Lansing High School (231300)**

**Total AP student in your School: 644**

School Totals for this View

Number of Exams

Percentage of Total Exams

Number of AP Students

5	4	3	2	1	Total Exams
128	160	214	111	30	643
20%	25%	33%	17%	5%	100%
28	97	172	123	84	644

### Subject Totals

Biology

Calculus AB

Calculus BC

Chemistry

Chinese Language and Culture

Computer Science A

English Language and Composition

English Literature and Composition

Environmental Science

European History

French Language and Culture

German Language and Culture

Italian Language and Culture

Latin

Microeconomics

Physics 1

Physics 2

Physics D: Mechanics

Psychology

Spanish Language and Culture

Statistics

Studio Art: 2-D Portfolio

Studio Art: 3-D Portfolio

Studio Art: Drawing Portfolio

United States Government and Politics

United States History

World History

5	4	3	2	1	Total Exams
3	3	9	3		18
15	26	36	15	3	95
21	5	6	3	1	36
3	4	6	4	2	19
2	2		1	1	6
3	5	5	1	1	15
19	18	23	10		70
4	11	3	5		23
2	4	2	2		10
7	6	7	2		22
	1				1
1					1
	1				1
			1	1	2
5	3	6	4	3	21
1	13	6	5	4	29
2	5	13	5		25
5	1	2	1		9
6	10	8	4	7	35
3	6	17	8	1	35
6	4	3	3	1	17
1	2		1		4
				1	1
3	4	5	1		13
3	4	11	8		26
8	4	8	2	2	24
5	18	38	22	2	85

### 5 Year Summary

Total AP Students

Number of Exams

AP Students with Scores 3+

% of Total AP Students with Scores 3+

2013	2014	2014	2016	2017
257	249	282	325	340
464	481	568	686	693
204	215	246	256	270
79.4	86.3	87.2	78.8	79.4

#### Michigan

Total AP Students

Number of Exams

AP Students with Scores 3+

Percentage of Students with Scores 3+

55,115	57,633	59,704	62,774	65,211
89,852	94,354	98,771	103,980	109,706
3,669	38,308	39,217	40,376	42,307
66.9	66.5	65.7	64.3	64.9

#### Global

Total AP Students

Number of Exams

AP Students with Scores 3+

Percentage of Students with Scores 3+

2,225,625	2,352,026	2,497,164	2,625,319	2,759,929
3,955,410	4,199,454	4,516,044	4,741,566	5,001,597
1,354,800	1,442,136	1,515,264	1,583,115	1,664,912
60.9	61.3	60.7	60.3	60.3



# Michigan Profile for Healthy Youth

## Parental Notification Form

Michigan Profile for Healthy Youth



The East Lansing School District is taking part in the Michigan Profile for Healthy Youth survey, MiPHY, supported by the Michigan Departments of Education and Health and Human Services. The research survey will ask about the health behaviors of 9<sup>th</sup>, and 11<sup>th</sup> grade students. The survey will ask about behavior and attitude related to nutrition, physical activity, injuries, tobacco, alcohol, and other drug use. It will also ask about sexual behaviors that cause AIDS, other sexually transmitted diseases, and pregnancy.

The 9<sup>th</sup> Grade will be taking the MiPHY on Tuesday, February 18<sup>th</sup> and the 11<sup>th</sup> Grade on Thursday, February 20<sup>th</sup>.

Students will be asked to complete an online survey at a private computer terminal. Participation in the survey will cause little or no risk to any student. The only potential risk is that some students might find certain questions to be sensitive. The survey has been designed to protect each student's privacy. **Students will not be asked to provide their name or any other identifying information.** Also, no school or student will ever be mentioned by name in any reported results. The results of this survey will help students in the future. We would like all selected students to take part in the survey, but **the survey is voluntary.** No action will be taken against the school, you, or the student if the student does not participate. Students can skip any question that they do not wish to answer. In addition, students may stop participating in the survey at any point without penalty.

The surveys are available at East Lansing High School for your review. If you have any questions please contact Ashley Schwarzbek, Assistant Principal for East Lansing High School at [ashley.schwarzbek.elps.us](mailto:ashley.schwarzbek.elps.us) or (517)333-7504

If you object to your child's participation in the survey, please complete the form below. **You only need to return this form if you do not give your child permission to take the survey.**

Please see the other side of this form for more facts about the survey. Thank you.

-----

Student's Name: \_\_\_\_\_ Grade: \_\_\_\_\_

I have read and understand this form concerning the MiPHY Project.

[ ] My child **does not** have my permission to participate.

Parent's Signature: \_\_\_\_\_

Telephone Number: \_\_\_\_\_

Date: \_\_\_\_\_

**Note: You DO NOT need to return this form if you give your child permission.**  
**Michigan Profile for Healthy Youth (MiPHY) Survey**

# Fact Sheet for Parents/Guardians

**Q. Why is the survey being done?**

A. The Michigan Departments of Education and Health and Human Services have provided this survey as a means for local school districts to assess student needs and develop education programs and other strategies to help reduce health risk behaviors.

**Q. What kinds of questions are asked on the survey?**

A. The MiPHY includes questions about a range of health risk behaviors and attitudes that can lead to serious health problems.

**Q. Are sensitive questions asked?**

A. Some questions may be considered sensitive. The only way to determine the extent to which adolescents are at risk, however, is to ask questions about these behaviors. Questions are presented in a straightforward and respectful manner and those that focus on risk behaviors always begin with an abstinence or non-use answer choice. In addition, students always have the option to skip questions.

**Q. Will student participation be anonymous? Will student privacy be protected?**

A. Yes. Survey administration procedures have been designed to protect student privacy and allow for anonymous participation. Students will not enter their names or other identifying information at any point during this survey.

**Q. Will students be surveyed again to see how their behavior changes?**

A. No. It will be impossible to track students who participate because no identifying information will be collected.

**Q. How was my child selected?**

A. All students in grades 7, 9, and 11 are selected and invited to participate in the survey.

**Q. How long will it take to fill out the survey?**

A. It will take approximately one class period to complete the online, multiple-choice survey.

Michigan Profile for Healthy Youth







**MSUFCU** MICHIGAN  
STATE  
UNIVERSITY  
FEDERAL CREDIT UNION



**STUDENT ART  
EXHIBIT 2020**

# STUDENT ART EXHIBIT

**JAN. 29 — FEB. 26**

**MSUFCU Headquarters**  
3777 West Road, East Lansing, MI

The high school with the most votes  
wins the School Spirit Award!

Sophie Rutkowski  
1st Place 2019  
ELHS Student

COME OUT AND SUPPORT ARTISTS FROM

## EAST LANSING HIGH SCHOOL

at MSUFCU Headquarters. Area high school  
artwork will be on display from January 29 -  
February 26. Vote at the headquarters or online  
through the website or Facebook page.

Vote for your favorite at [msufcuart.com](http://msufcuart.com) or at MSUFCU Headquarters

Please go online to [MSUFCUART.com](http://MSUFCUART.com) and vote for the our ELHS students:

#10 Ruby Cothran, #11 Steven Westfall #12 Ji Soo Min,  
#13 Kohi Kalandarova, #14 Claudia Dempsey, #15 Eaman Ali, #16 Ellie Myron,  
#17 Ji Hye Min, #18 Enid Smith, & #19 Madeleine Kleinerman



# EAST LANSING HIGH SCHOOL THEATER 2020

PRESENTS



## LITTLE WOMEN

the  
broadway  
musical

### **Show Times:**

Friday, March 20 - 7:00pm  
Saturday, March 21 - 7:00pm  
Sunday, March 22 - 2:00pm  
Thursday, March 26 - 7:00pm  
Friday, March 27 - 7:00pm  
Saturday, March 28 - 7:00pm  
Sunday, March 29 - 2:00pm

# Place Your Ad With Us!

Business Card Ad \$25.00

½ Page Ad \$50.00

Full Page Ad \$100.00

**Business  
Card**  
**Approx 3 ½ x 2**

**½ Page Ad**

**Approx 5 1/2 x 4**

**Full Page Ad**

**Approx 8 ½ x 5 1/2**

*‘not to scale’*

Checks should be made payable to:

**East Lansing High School**

Send to: East Lansing High School

Attention: Theater Department

509 Burcham Drive

East Lansing, MI 48823

**East Lansing High School  
Presents**



**March 20-29, 2020**

**Tickets Available at the Door**

## **What To Do:**

**Submit ads by *February 28, 2020***

- Please submit digital files to:  
[elhstheaterprogram@gmail.com](mailto:elhstheaterprogram@gmail.com)
- **JPEG or PDF files preferred**



# **THE GREATER LANSING AREA CLUB**

NATIONAL ASSOCIATION OF NEGRO BUSINESS AND  
PROFESSIONAL WOMEN'S CLUBS, INC. PRESENTS

## **"Let's Talk About It! Community Conversation about S.A.F.E.\* Encounters with Law Enforcement" Forum**

**THURSDAY, MARCH 12<sup>th</sup> | 5:30 PM | DWIGHT RICH SCHOOL OF THE ARTS  
2600 HAMPDEN DRIVE | LANSING, MICHIGAN**

**Light refreshments served at 4:30 p.m.**

***Join Young Adults, Parents, and the Metro Lansing Community to Talk About...***

- How to Respond when Interacting with Law Enforcement
- Building Good Relationships with Law Enforcement
- Legal Rights of Interrogation
- The Emotional Impact on Families and Law Enforcement
- Saving the Lives of our Youth and Young Adults

**\*SAFE = Sound Advice For Encounters**

### **Q & A with Our Panelist**

**The Honorable Donald L. Allen, Jr., The Honorable Shauna Dunning  
Lansing Police Chief Daryl Green, Attorney Takura Nyamfukudza  
Ingham County Prosecutor Carol A. Siemon  
Ingham County Sheriff Scott Wriggelsworth**

### **Scenario Committee**

**The Honorable Amy Ronayne Krause  
School Principal Steven Lonzo  
Criminal Justice Professor Lynnell Talbert  
Attorney H. Jamie White**

### **Moderator**

**Attorney Ayanna D. Neal**

**RSVP EVENTBRITE: <https://tinyurl.com/ula9jd8> OR CALL: 517.258.0475**

#### **S.A.F.E. ENCOUNTERS COMMITTEE**

**Renee Morgan Freeman & ReShane Lonzo, Co-Chairs  
Cynthia Jones, BreAnna Nixon, Sonya Sanford Quinney and Christina Redmond  
Gloria Davis, GLAC President**



The Greater Lansing Area NBPW Club, Inc.





# VIDEO GAME DESIGN 2D & 3D ANIMATION E-SPORTS STREAMING

## SUMMER CAMPS @ MICHIGAN STATE UNIVERSITY JULY 2020

MSU Media Summer Camps are pre-college programs that engage students with topics including game design, animation, and eSports. Each camp includes interactive and intensive instruction with MSU faculty, culminating in a showcase of student work on the final day. Day-only and overnight available (middle school camps are day-only). Scholarships available.

**Beginner Video Game Design:** High School July 13-17, 20-24, Middle School July 27th-31

**Advanced Video Game Design (HS):** July 20-24

**Immersive 2-Week Game Design (HS):** July 12-24

**eSports Super Smash Bros Ultimate (HS):** July 13-17

**3D Animation (HS):** July 13-17, 20-24

**2D Digital Art Camp (NEW!):** Designing Monsters - Pokemons: High School July 20-24  
Middle School July 27th-31st

# CAS.MSU.EDU/CAMPS





# A National College Fair is coming soon to a location near you!

**Free poster enclosed!**

At a National College Fair, students learn about programs and find their best college fit. They meet face-to-face with representatives from hundreds of colleges—all in one place—and get their questions answered about majors, degree programs, campus visits, internships, scholarships, financial aid, and much more.

Encourage the families you serve to attend! The fair is free and open to the public.

---

**Thank you for letting students know about this opportunity!**

## **Spread the word:**

- **Encourage students to learn more at [nacacfairs.org/go](http://nacacfairs.org/go).**
- **Hang the enclosed poster** in the cafeteria, hallway, counseling office, or other high-traffic area.
- **Download a flyer at [nacacfairs.org/flyers](http://nacacfairs.org/flyers).** You can print or forward a letter-size flyer to students.
- **Send a special email** to students and families.
- **Include info** on your website, in newsletters, and in morning announcements.
- **Add the fair to your school event calendars.**
- **Arrange for a bus** to take students to the fair.

## **Helpful links:**

- **Students may register Free for the fair at [www.gotomyncf.com](http://www.gotomyncf.com) and [www.gotomystemfair.com](http://www.gotomystemfair.com)**
- **List of colleges that will be at the fair: *National College Fairs: [bit.ly/ncf-go](http://bit.ly/ncf-go) | STEM Fairs: [bit.ly/stem-go](http://bit.ly/stem-go)***
- **College application fee waiver: [nacacfairs.org/ApplicationFeeWaiver](http://nacacfairs.org/ApplicationFeeWaiver)**
- **Tips for Picking the Right College: [nacacfairs.org/RightFitCollege](http://nacacfairs.org/RightFitCollege)**
- **View our Counselor Tips page to find information on busing, bulk student registration, and registering as a counselor: [www.nacacfairs.org/counselor-tips](http://www.nacacfairs.org/counselor-tips)**

## **Learn more at [nacacfairs.org](http://nacacfairs.org).**

National College Fairs have been offered for nearly 50 years as a program of the National Association for College Admission Counseling (NACAC). In addition to its signature fairs program, NACAC offers Performing and Visual Arts College Fairs and STEM College and Career Fairs.



**Attend an Upcoming Webinar:**  
[blog.gotocollegefairs.com](http://blog.gotocollegefairs.com)





# COLLEGE FOR FREE

[lcc.edu/earlycollege](http://lcc.edu/earlycollege)



"Being able to take college credits while still in high school has been amazing. I enjoy my classes; it's rewarding, fast paced and challenging. I am excited about getting a head start on earning a college degree. I've made so many new friends, and I get to see my old friends from high school, too!"

## - Autumn

Students at The Early College learn in a fun, fast-paced and exciting environment at Lansing Community College's Downtown Campus.

## THE EARLY COLLEGE MEANS

- More than \$60,000 in potential college savings
- 100 percent FREE textbooks and tuition
- Up to 60 FREE college credits, in high school
- Now Enrolling for Fall of 2020



**ALL TUITION AND  
TEXTBOOKS ARE FREE!**

## INFORMATIONAL MEETINGS

Upcoming Informational Meetings

- Tuesday, Feb. 25, 2020 · 6–7 p.m.  
LCC Downtown Campus,  
Gannon Building, Michigan Room 1128  
411 North Grand Avenue, Lansing, MI 48933
- Thursday, March 5, 2020 · 6–7 p.m.  
DeWitt Highschool (Presentation Room)  
13601 Panther Dr., DeWitt, MI 48820
- Tuesday, March 10, 2020 · 6–7 p.m.  
Ingham Intermediate School District;  
Thorburn Education Center  
2630 W. Howell Rd., Mason, MI 48854
- Saturday, March 14, 2020 · 10–11 a.m.  
LCC Downtown Campus,  
Gannon Building, Michigan Room 1128  
411 North Grand Avenue, Lansing, MI 48933

**Application Deadline: March 27, 2020**

Apply today at [lcc.edu/earlycollege](http://lcc.edu/earlycollege).



517-483-1640 · [lcc.edu/earlycollege](http://lcc.edu/earlycollege)

Lansing Community College is an equal opportunity educational institution/employer. Lansing Community College programs and activities are open for all persons regardless of race, color, sex, age, religion, national origin, creed, ancestry, height, weight, sexual orientation, gender identity, gender expression, disability, familial status, marital status, military status, veteran's status, or other status as protected by law, or genetic information.





# The American Legion

## DEPARTMENT OF MICHIGAN

212 N. Verlinden Ave., Lansing Michigan 48915

---

# Do Your Students Need College Scholarships?

---

The American Legion, Department of Michigan offers high school students several opportunities to gain valuable experience that will last a lifetime. At the same time, students can earn money for college or earn the needed community service points required on many college entrance applications, including the West Point Military Academy.

### Steps to applying:

1. Choose a scholarship or program
2. Email [legion@michiganlegion.org](mailto:legion@michiganlegion.org) to have links to applications emailed directly to you. Please share these forms with your students or visit our website.
3. Apply: be aware of the deadline dates written for the scholarship or program.
4. If you have any questions refer to the applications or call 517-220-2754
5. For a directory of American Legion Posts in Michigan visit [www.legion.org/posts](http://www.legion.org/posts). Some AL Posts offer scholarships for students wanting to attend Boys State, Girls State, and Student Trooper.
6. These programs are powerful and dynamic. If a student is having trouble finding funding to attend a program, contact The American Legion, Department of Michigan let us help them.

## The American Legion has programs that offer scholarships for college

Students who attend Boys State or Girls State, and are descendants of a war time era veteran may apply for the opportunity to win \$20,000 from the Samsung American Legion Scholarship.

The American Legion, Department of Michigan has opportunities for ALL students for a chance to earn scholarships from different programs the American Legion offers.

*Veterans serving veterans since 1919*

---

# [www.michiganlegion.org/scholarships](http://www.michiganlegion.org/scholarships)





# Maximize your financial aid and don't make these... **COMMON MISTAKES**

## **Not Completing the Free Application for Federal Student Aid (FAFSA)**

All State of Michigan financial aid programs require a student to file the FAFSA. By not completing the FAFSA, you are missing the opportunity to qualify for what could be thousands of dollars to help you pay for college. The FAFSA determines if you are eligible for need-based financial aid and is the application used for Federal Direct Loans.

## **Not Using the Correct Web Site**

The official FAFSA Web site is [fafsa.gov](http://fafsa.gov). You never have to pay to complete the FAFSA.

## **Not Getting a FSA ID Ahead of Time**

To log in and sign the FAFSA online, you must use a FSA ID. Register for a FSA ID at [fsaid.ed.gov](http://fsaid.ed.gov).

## **Waiting to Fill Out the FAFSA**

It is important to fill out the FAFSA early. You may complete the FAFSA as early as October 1. Students are required to report income information from an earlier tax year. For example, on the 2019-20 FAFSA, students (and parents, as appropriate) will report their 2017 income information.

## **Not Filing the FAFSA by the Deadline**

The State of Michigan deadline for the Michigan Competitive Scholarship (MCS) and Michigan Tuition Grant (MTG) is March 1.

## **Not Reading Directions Carefully**

Too many students see delays in their financial aid for simple mistakes that could have been easily avoided.

- **College Grade Level**  
Question 29 on the FAFSA asks that you select your grade level in college from July 1, 2019 through June 30, 2020. If you are currently a senior in high school or will be a first-time college student, select "1st year, never attended college."
- **Certificate/Degree**  
Question 30 on the FAFSA asks that you select the degree or certificate that you will be working toward during the 2019-20 school year. If you are currently a high school senior, do not select "graduate/professional degree."
- **Confusing Parent and Student Information**  
Remember that the FAFSA is the student's application. When the FAFSA refers to "you" or "your," it's referring to the student.
- **Entering the Wrong Name**  
You must enter your full name as it appears on official government documents (no nicknames). Your full name should also be reported the same way on your SAT.
- **Entering the Wrong Social Security Number (SSN)**  
To avoid delays in processing your FAFSA, make sure that you have entered the correct SSN.
- **Amount of Income Tax**  
Income tax is not the same as income, taxes withheld, or taxes due. It is the amount of tax that you (and if married, your spouse) paid on your income earned from work.
- **Entering the Wrong Address**  
Make sure you enter your permanent address, not your temporary or summer address. To be considered for State of Michigan financial aid, you must be a resident of Michigan (which needs to be reported on your FAFSA).
- **Citizenship Status**  
Students must be a U.S. citizen or eligible non-citizen to receive Federal and State financial aid. Question 14 on the FAFSA asks you to report your citizenship status. Do not leave this answer blank.



### **Not Reporting Parent Information**

Even if you fully support yourself, pay your own bills, and file your own taxes, you may still be considered a dependent student for Federal student aid purposes; therefore, you'll need to provide parent information on your FAFSA. Parent information will need to be provided if you do not meet the criteria for independent status. To see if you qualify for independent status, visit [www.studentaid.ed.gov](http://www.studentaid.ed.gov) (Dependency Status).

### **Listing Only One College**

You can add ANY college you are considering to your FAFSA, even if you aren't sure whether you'll apply or be accepted. It doesn't hurt your application to add more schools. **Don't forget to add the Michigan college you plan to attend as your FIRST school code listed on the FAFSA.** If you qualify for State aid, only the institution you list first on your FAFSA will be notified of your eligibility for an award. Log in to your MiSSG Student Portal account at [www.michigan.gov/missg](http://www.michigan.gov/missg) or contact MI Student Aid at 1-888-447-2687 when your school choice changes.

### **Not Signing the FAFSA**

Many students fail to actually sign the FAFSA with their FSA ID and submit it.

### **Not Completing the TIP Application Before the Deadline**

For TIP eligible students, the TIP application must be completed by August 31 of each student's high school completion year. Otherwise, all TIP benefits are forfeited permanently.

### **Not Logging into MiSSG Student Portal**

MI Student Aid offers an online Student Portal where students can log in and update their contact information, change their college choice, and view their State aid eligibility and payments. To access the MiSSG Student Portal, visit [www.michigan.gov/missg](http://www.michigan.gov/missg) and click the "Student Portal" button. First-time users must have their SSN and a FAFSA on file or a TIP application to create an account. To begin, click "Sign Up" and create a username and password.

### **No SAT Score on Record**

To be considered for MCS, MI Student Aid must have your SAT record linked with a SSN. To verify that your SSN is on file, please contact our Customer Care Center at 1-888-447-2687.

If MI Student Aid did not receive your score from SAT, you should complete the following steps:

1. Make sure you checked the box on your SAT allowing permission for your score to be released.
2. Contact...
  - a. your high school for permission to fax your SAT score to MI Student Aid at 517-241-5835, or;
  - b. your college for permission to fax your SAT score to MI Student Aid at 517-241-5835, or;
  - c. SAT at 866-756-7346 to send a copy of your scores to MI Student Aid, or;
  - d. log in to the CollegeBoard at <https://collegeboard.org/mysat> to request your scores be sent to MI Student Aid.

**For questions or more information, please contact MI Student Aid.**

Phone: 1-888-447-2687  
Email: [mistudentaid@michigan.gov](mailto:mistudentaid@michigan.gov)  
Fax: 517-241-5835  
Web: [www.michigan.gov/mistudentaid](http://www.michigan.gov/mistudentaid)  
Address: P.O. Box 30462, Lansing, MI 48909

\*Source: U.S. Department of Education



@mistudentaid



Our accelerated year programs challenge gifted middle and high school students in math, literature, and language.

## ACADEMIC YEAR PROGRAMS 2020-2021



C  
H  
A  
M  
P

### Cooperative Highly Accelerated Math Program

Grades 7-9

*Locations: MSU Campus, Avondale*

With weekly classes, CHAMP is an academic year-long program designed to teach students the required four-year high school mathematics curriculum in just two years.

I  
S  
H  
A  
L  
L

### Intensive Study in Humanities, Arts, Language, & Literature

Grades 7-9

*Locations: MSU Campus, West Bloomfield*

Advanced readers study a wide range of texts in literature and humanities including novels, biographies, plays, poetry, and film. The program covers four years of high school English curriculum in just two academic years.

A  
L  
L

### Amo Linguae Latina (I Love Latin!)

Grades 7-10

*Locations: MSU Campus / Online Hybrid*

Each semester of the program corresponds with one year of high school Language Arts/Latin. Discussion of language will be anchored in Roman and medieval culture, and the role Latin has played in the development of the English language. Students will take the National Latin Exam at the end of each year, and the AP Latin exam at the end of the program.

M.  
A.  
N.  
G.  
A.

### Japanese Language

Grades 7-9

*Locations: Southeast MI*

This new program will engage students in the Japanese language and culture. The course will span six semesters--three years-- and spend the final semester of the program preparing for the AP Japanese exam.

## APPLY ONLINE @

## GIFTED.MSU.EDU

Applications open January 2020



**GATE**  
GIFTED AND TALENTED EDUCATION

GATE summer programs  
provide a challenging and  
fun academic experience  
for gifted students!

---

## SUMMER PROGRAMS 2020

---

**G  
U  
P  
P  
Y**

### Gifted University for Parents & Precocious Youth

*Grades 2-6*

GUPPY is designed for young gifted students to attend MSU for a weekend that will explore educational experiences with faculty.

**June 19-21**

Grades 3-6

**July 20-24** (9am-12pm)

Grades 3-6

**June 26-28**

Grades 2-6

**July 24-26**

Grades 3-6

**I  
S  
4  
G  
T**

### Intensive Studies For Gifted and Talented

*Grades 7-11*

Students will participate in a one-week advanced program in a specific concentrated curriculum. Past courses include Pre-Med Ed, Forensic Science, Microbiology, and Behavior Mathematics in AI.

**June 21-26**

**July 5-10**

**July 19-24**

**M  
S  
T**

### Math, Science, and Technology

*Grades 7-8*

This one-week program offers a wide range of advanced STEM curriculum that students don't have access to in middle school! Each student will participate in two classes and one workshop.

**July 12-17**

**M  
S  
T  
L**

### Math, Science, Technology, and Leadership

*Grades 9-10*

This two-week program offers advanced topics such as Robotics and Microbiology! Students will choose two STEM courses, as well as one Leadership Workshop.

**July 12-24**

---

**APPLY ONLINE @**

**G I F T E D . M S U . E D U**

Applications open January 2020

# Information Meeting - Sunday, March 22, 2020

**Location: MSU Business College**

632 Bogue Street, East Lansing, MI 48823

## **GUPPY** *Grades 2-6*

GUPPY is designed for young gifted students to attend the MSU campus and explore educational experiences.

## **MST** *Grades 7-8*

Students attend one-week of advanced Math, Science, and Technology curriculum through classes and workshops on campus.

## **MSTL** *Grades 9-10*

In this two-week program, high school students will choose two STEM courses & one leadership workshop.

## **IS4GT** *Grades 6-11*

Students will participate in a one-week advanced program in a specific concentrated curriculum.

## Summer Programs

### **12 pm - 2 pm**

GATE overview/ Testing  
Academic Year Review  
Summer Programs

12:00 pm - 12:30 pm  
12:35 pm - 1:00 pm  
1:00 pm - 2:00 pm

Come learn more about the weekend and full-week programs geared towards gifted students!  
For grades 2-11.

**RSVP ONLINE BY MARCH 13, 2020 @ [www.gifted.msu.edu/gatesummerinfo2020](http://www.gifted.msu.edu/gatesummerinfo2020)**



**GATE**  
GIFTED AND TALENTED EDUCATION



# Academic Year Programs

Beginning Fall 2020

Complete 4 years of high school curriculum in 2 to 3 years!

For grades 7-10.

## Information Meeting

**Sunday, February 9, 2020**

**11 am - 2 pm**

**Location: MSU Business College**

632 Bogue Street, East Lansing, MI 48823

ALL	11:00 am - 11:30 am
M.A.N.G.A.	11:30 am - 12:00 pm
Testing/ Dual Enrollment	12:00 pm - 12:30 pm
CHAMP	12:35 pm - 1:05 pm
ISHALL	1:10 pm - 1:45 pm

### CHAMP

*Mathematics*

Highly advanced math students can enroll in this accelerated math program! Study Algebra I, Algebra II, Geometry, and Pre-Calculus.

### ISHALL

*Humanities, Arts, Language, & Literature*

Advanced readers will study a wide range of texts and media in literature and the humanities including novels, poetry, and film.

### M.A.N.G.A.

*Japanese Language*

Students enrolled in this new program will be studying the Japanese language and culture over 6 semesters.

### ALL

*Latin Language*

Students will study language and linguistics and discuss the role Latin has played in the development of the English language.



## FREE PARKING IN RAMP 1

For a map of the campus, please visit

[www.maps.msu.edu/interactive](http://www.maps.msu.edu/interactive)

Phone: 517-432-2129

Email: [gifted@msu.edu](mailto:gifted@msu.edu)

Website: [gifted.msu.edu](http://gifted.msu.edu)

**RSVP ONLINE BY  
JANUARY 31st, 2020 @**

[www.gifted.msu.edu/gateAYinfo2020](http://www.gifted.msu.edu/gateAYinfo2020)

# GATE

Gifted and Talented Education  
MICHIGAN STATE UNIVERSITY

**2020-2021**  
PROGRAM GUIDE



Apply online at  
**gifted.msu.edu**

# Dear Parents and Students,

The GATE office is excited to announce that we have a new program beginning in fall 2020, M.A.N.G.A. – Japanese. In addition, we are offering the GUPPY program for second grade students during the weekend of June 26-28, 2020. Summer programs have rolling admissions, so complete your application early!

GATE academic year programs remain the same, serving students in grades 7-10. CHAMP (Math), ISHALL (English), and ALL (Latin) are offered on the MSU campus and CHAMP (Math), ISHALL (English), and M.A.N.G.A. (Japanese) will be available at satellite locations in Southeast Michigan.

The advanced curriculum of all programs is developed with gifted students in mind. GATE students will engage with topics and concepts that are several years advanced for their current grade level while building on skills and concepts they may have learned in previous GATE programs.

The application deadline for all programs is May 7, 2020. We encourage you to apply early to ensure you have all materials submitted by the deadline.

Please reference the Application Guideline charts (page 9 for Academic Year Programs and page 31 for Summer Programs) based on your student's current grade level to see where your student fits.

---

## Academic Year Information Meeting

**Sunday, February 9, 2020**

11:00 am – 2:00 pm

MSU Business College

## Summer Information Meeting

**Sunday, March 22, 2020**

12:00 pm – 2:00 pm

MSU Business College

## Southeast Michigan Information Meeting

**Wednesday, March 25, 2020**

6:00 pm – 8:00 pm

MSU Novi Tollgate Education Conference Center



# Table of Contents

About Gifted and Talented Education At Michigan State University ..... 1

**Academic Year Programs ..... 9**

Cooperative Highly Accelerated Mathematics Program (CHAMP - Mathematics) ..... 10

Intensive Studies in Humanities, Arts, Language, and Literature (ISHALL - English) ..... 13

Amo Linguam Latinam (ALL – Latin) ..... 16

Michigan’s Accelerated NihonGo for Americans (M.A.N.G.A. – Japanese) ..... 19

Langue pour Étudiants Avancés de Français (LEAF - French) ..... 22

**Academic Year Program Details..... 24**

**Summer Programs ..... 31**

Gifted University for Parents and Precocious Youth (GUPPY) ..... 33

Intensive Studies for Gifted and Talented (IS4GT) ..... 38

Math, Science, and Technology (MST@MSU)..... 42

Math, Science, Technology, and Leadership (MSTL) ..... 46

**Summer Program Details ..... 49**

Ingham Intermediate School District..... 54





Dor





IN MEMORIAM

# Dorothy Lawshe

**We are sad to announce the passing of  
original GATE director, Dorothy Lawshe.**

Dorothy passed away in May of 2019 and was the posthumous recipient of the Michigan Association for Gifted Children's inaugural Lifetime Achievement Award in October 2019. Former GATE director Jenny McCampbell accepted the award on behalf of Dorothy's family.

Dorothy won MSU's Crystal Apple Education award and also established the Cooperative Highly Accelerated Mathematics Program (CHAMP) and Math, Science, and Technology (MST@MSU) Program, both of which are still in existence today.

Dorothy will be greatly missed, and it is our hope that past and future GATE participants and families know of her impact within the gifted community and the selflessness with which she served gifted children.

Dorothy's family has asked that donations in her memory be made to the Dorothy Lawshe Endowment in recognition of the impact Dorothy has had on the lives of Michigan children over the past several decades.

---

## **The Dorothy Lawshe Endowment for Gifted and Talented Education**

The generosity of contributions to the Dorothy Lawshe Endowment fund ensures that gifted and talented students continue to enjoy excellent, enhanced, educational opportunities for years to come by funding GATE's need-based scholarships, which are granted to high-ability students who would otherwise not have access to programming.

Please donate to help support GATE and gifted students in Michigan.

Online donations can be made by visiting: **[givingto.msu.edu/gift/?sid=1320](https://givingto.msu.edu/gift/?sid=1320)**



  
**OGRE**  
**GOGATE**



The background is a vibrant green collage of various white icons representing different fields of study. At the top, there are icons for mathematics (pi, infinity, numbers, geometric shapes), science (telescope, microscope, DNA helix, globe), and technology (computer monitor, smartphone, gears). The bottom section features a large, faint map of Michigan, surrounded by icons for history and art (classical statues, lyres, scrolls, trophies) and general education (lightbulb, compass, books, wheels).

# About Gifted and Talented Education

## At Michigan State University

Gifted and Talented Education or GATE is a division of University Outreach and Engagement at Michigan State University. The GATE office is dedicated to promoting differentiated educational programs for students in middle school and high school. The mission of the Gifted and Talented Education office is to provide educational experiences that allow gifted students to develop intellectually, to cultivate social relationships, and to expand their understanding of the world.

---

# About Academic Year Programs

Space is limited in academic year programs and the application process is competitive.

Our academic year programs challenge gifted middle and high school students in math, literature, and language. These programs are designed to replace high school curricula, allowing students to complete four years of Michigan High School Content Expectations (HSCE) and Common Core National Standards in just two years of study. (Exception: M.A.N.G.A. is a three-year course.) Courses are taught by MSU instructors. Students are expected to stay with the program for the full program cycle. After completion, students are prepared to take advanced placement (AP) courses at their high school or dual enroll through MSU or another institution.

Eligibility varies by program but is generally determined by ACT or SAT scores and other requirements.

**Academic year programs include:**

---

## Cooperative Highly Accelerated Mathematics Program (CHAMP – Mathematics)

Current application grades for CHAMP are students in grades 6–9. CHAMP is offered in East Lansing and Southeast Michigan. The CHAMP program begins with Algebra 1.

---

## Intensive Studies in Humanities, Arts, Language, and Literature (ISHALL – English)

Current application grades for ISHALL are students in grades 6–10. ISHALL is offered in East Lansing and Southeast Michigan. The ISHALL program begins with grade 9 English curriculum.

---

## Amo Linguam Latinam (ALL – Latin)

Current application grades for ALL are students in grades 6–10. ALL is offered in East Lansing as a hybrid class. ALL begins with year 1 Latin curriculum.

---

## Michigan's Accelerated NihonGo for Americans (M.A.N.G.A. – Japanese)

Current application grades for M.A.N.G.A. are students in grades 6–9. M.A.N.G.A. is offered in Southeast Michigan. M.A.N.G.A. is a hybrid class with mostly in person curriculum, as well as online meetings. M.A.N.G.A. begins with year 1 Japanese curriculum. **PLEASE NOTE: This is a 3-year program.**



---

# About Summer Programs

**Summer programs have rolling admissions and fill up quickly! Apply early!**

GATE summer programs offer students the chance to experience advanced coursework and the college campus alongside their high achieving peers. Programs include a residential option for grades 7 and above (age 12 and above), as well as a commuter option for all programs.

**Summer programs include:**

---

## Gifted University for Parents and Precocious Youth (GUPPY)

GUPPY offers a variety of exploratory educational presentations and hands-on experiences in Michigan State University's laboratories and classrooms. There are several advanced topic "tracks" for students to choose from, each with their own combination of STEAM-based classes.

---

## Intensive Studies for Gifted and Talented (IS4GT)

IS4GT is a one-week advanced residential or commuter program in a specific concentrated curriculum for students in grades 6-11.

---

## Math, Science, and Technology (MST@MSU)

A one-week residential or commuter program for students in grades 7-8. MST classes and workshops are offered in a wide range of topics such as: computer science, chemistry, physiology, and more. Students will take two classes plus one workshop.

---

## Math, Science, Technology, and Leadership (MSTL)

A two-week residential or commuter program for students in grades 9-10. This program offers advanced topics such as molecular biology and number theory. Students will choose two STEM courses, as well as one Leadership Workshop. Leadership workshops are designed to introduce students to concepts and skills required to be a leader.

---

# How do I Apply?

All programs require these four things:

- Above grade level testing
- A teacher recommendation
- Your most recent report card
- **\$50 non-refundable application fee**

---

## Getting Started

Visit **gateway.gifted.msu.edu**. There you will complete (or update, if you're a returning applicant) a student profile. Once that's done, you can apply!

1. Complete your testing early! Testing information can be found at **gifted.msu.edu**. Each program page has an "Eligibility" page with minimum accepted tests and scores for applying. If you have an above-level test that is not listed, please email **gifted@msu.edu** to see if we will consider it.
2. Upload your testing and report card to your application.
3. You will be asked for your teacher's email address within your application. Once submitted, your teacher will receive a link to complete the recommendation form. External letters or recommendations are not accepted.
4. **Pay your \$50 non-refundable application fee at [gifted.msu.edu/payment](https://gifted.msu.edu/payment)**  
If you're requesting financial aid, you can do so within the application.

Once all these steps are complete, GATE will review your application. For CHAMP and ISHALL applicants, a diagnostic test will also be administered to determine program readiness.

---

## Testing Requirements

All programs require above grade-level testing such as SAT, ACT, CogAT, and NNAT. For more information, visit **gifted.msu.edu**

The following charts show minimum test scores required to apply for GATE programs for grades 2 and up.

Only 1 qualifying score per test is required to meet minimum application requirements. For example, a CHAMP applicant needs an ACT score of at least 21 in Math OR a 23 Composite to apply.

Note: Score requirements are a minimum benchmark.  
Testing alone does not guarantee your student's acceptance.



# Test Scores Accepted for The GUPPY Program (Grades 2-6)

Program	PSAT 8/9 Math	PSAT 8/9 Reading	NNAT	IOWA	NWEA	MSTEP	CogAT
<b>GUPPY 2</b>	X	X	<b>90th</b> percentile	<b>90th</b> percentile	<b>95th</b> percentile	<b>Level 4</b>	<b>90th</b> percentile
<b>GUPPY 3-4</b>	<b>410</b>	<b>410</b>	<b>90th</b> percentile	<b>90th</b> percentile	<b>95th</b> percentile	<b>Level 4</b>	<b>90th</b> percentile
<b>GUPPY 5-6</b>	<b>410</b>	<b>410</b>	<b>90th</b> percentile	<b>90th</b> percentile	<b>95th</b> percentile	<b>Level 4</b>	<b>90th</b> percentile

Note: A full IQ score report is acceptable for all programs, in place of the tests listed above. For IQ testing information visit [gifted.msu.edu](http://gifted.msu.edu).

If your scores come close to meeting the stated minimums, we encourage you to apply. The application review process is holistic and will take into consideration all aspects of your application.

# Minimum Test Scores Required for GATE Academic Year Programs (Grades 7 and Up)

Program	ACT Math	ACT English	ACT Reading	ACT Composite	SAT Math	SAT Evidence-Based Reading and Writing	SAT Total	CogAT**
<b>CHAMP</b>	<b>21</b>	++	++	<b>23</b>	<b>560</b>	++	<b>1090</b>	<b>90th</b> percentile (Quantitative)
<b>ISHALL</b>	X	<b>21</b>	<b>22</b>	X	X	<b>560</b>	X	<b>90th</b> percentile (Verbal or Non-Verbal)
<b>ALL</b>	X	<b>20</b>	<b>20</b>	X	X	<b>520</b>	<b>1020</b>	<b>90th</b> percentile (Composite)
<b>M.A.N.G.A.</b>	X	<b>20</b>	<b>20</b>	X	X	<b>520</b>	<b>1020</b>	<b>90th</b> percentile (Composite)

\*\* CogAT scores must be in the 90th percentile in the indicated subtest. Retesting required after 3 years.

NOTE: CogAT scores are valid for Southeast Michigan locations only. CogAT scores are **NOT** accepted for East Lansing programming.

++No minimum score required, but student must exhibit a proficiency for reading and writing comprehension.

# Minimum Test Scores Required for GATE Summer Programs (Grades 6 and Up)

Program	Grades	ACT Math	ACT English	ACT Reading	ACT Composite	SAT Math	SAT Evidence-Based Reading and Writing	SAT Total	CogAT **
<b>MST@MSU</b>	<b>7-8</b>	<b>18</b>	<b>18</b>	<b>18</b>	<b>19</b>	<b>500</b>	<b>500</b>	<b>980</b>	<b>90th percentile</b>
<b>MSTL</b>	<b>9-10</b>	<b>19</b>	<b>19</b>	<b>20</b>	<b>20</b>	<b>510</b>	<b>510</b>	<b>1000</b>	<b>90th percentile</b>
Intensive Study in Aqueous and Environmental Geochemistry	9-11	19	19	19	20	510	510	1000	90th percentile
Intensive Study in Algorithms and Artificial Intelligence	8-11	20	20	20	21	520	520	1020	90th percentile
Intensive Study in Aircraft Piloting	8-11	18	18	18	19	500	500	980	90th percentile
Intensive Study in Animation	6-9	18	18	18	19	500	500	980	90th percentile
Intensive Study in Mathematical Machine Learning	8-10	20	20	20	21	520	520	1020	90th percentile
Intensive Study in PRE-MED ED	7-9	19	19	19	20	510	510	1000	90th percentile
Intensive Study in Pre-Law: LitIGATE	8-11	19	19	19	20	510	510	1000	90th percentile
Intensive Study in Science Fiction and Fantasy Short Story Writing	7-11	19	19	19	20	510	510	1000	90th percentile
Intensive Study in Sustainable Agriculture and Remote Sensing	9-11	19	19	19	20	510	510	1000	90th percentile
Intensive Study in Technical Writing in GIS, Data Visualization	7-11	19	19	19	20	510	510	1000	90th percentile

\*\* Retesting required after 3 years.

# TESTING FOR GATE PROGRAMS

## **CogAT** **Cognitive Abilities Test**

Only for summer programs and Southeast Michigan Academic Year Programs (administered by MSU GATE)

### **Test dates**

**At MSU:** March 9, April 6, April 27, and May 7

**Southeast Michigan:** March 21, April 15, May 2, June 13

**Cost:** \$45 per person

Go to **gifted.msu.edu** to register and for testing locations.

## **IQ Testing**

For application to GATE Programs, an IQ test is acceptable in place of an ACT or SAT test. The psychologists listed below provide IQ assessment, such as the WISC V test.

### **Pat LaPat**

#### **Clinical Psychologist**

36516 Green Spring  
Farmington Hills, MI 48311  
Call 248-661-0195 for details

or

2190 N. Woodward  
Bloomfield Hills, MI 48301  
Call 248-661-0195 for details

### **Bright Pine**

#### **Dr. Katherine Lewitzke, PsyD, LP**

Licensed Psychologist and Clinic Director  
Call 248-383-8728 for details

### **MSU Psychological Clinic**

316 Physics Rd., Rm 262  
East Lansing, MI 48824  
Call 517-355-9564 for details

### **University of Michigan**

#### **The University Center for the Child and Family**

Call 734-764-9466 for details

### **Wayne State University**

#### **Psychology Clinic**

60 Farnsworth St.  
Detroit, MI 48202  
Call 313-577-2840 for details

The cost varies based on the services requested and rendered. Please call provider to inquire about cost.

GATE does not recommend, guarantee, or take any responsibility or liability for the list of organizations above.







# Academic Year Programs

Our academic year programs challenge gifted middle and high school students in math, literature, and language. Space is limited in academic year programs and the application process is competitive. Apply early!

## Academic Year Application Guideline

If you are currently in the following grades during application time...

You can apply for the following Academic Year Programs:

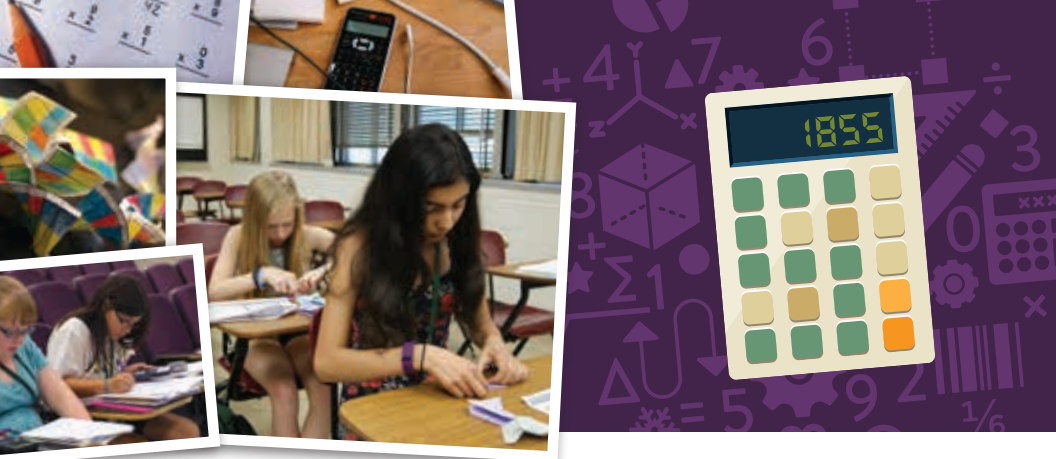
Grades 6-9

**CHAMP, ISHALL, or M.A.N.G.A.**

Grades 6-10

**ALL**

Note: students begin these programs in the Fall of their 7th, 8th, 9th, or 10th grade year. For example, to begin the program in the Fall of 7th grade, students must apply in the spring of their 6th grade year.



# Cooperative Highly Accelerated Mathematics Program (CHAMP – Mathematics)

FALL 2020 – SPRING 2022

CHAMP, in partnership with the Department of Mathematics and University Outreach and Engagement at Michigan State University, provides classroom instruction for qualified mathematically gifted students applying in grades 6-9.

## Important Dates for CHAMP Program

### CHAMP at MSU

**Application deadline: May 7, 2020**

**Information meeting:** February 9, 2020

#### Classes held Thursdays

First day of class (tentative):

Thursday, August 27, 2020

1:00 – 3:30 pm

MSU campus – Room TBD

### CHAMP – Southeast Michigan

**Application deadline: August 10, 2020**

**Information meeting:** March 25, 2020

#### Classes held Mondays

First day of class (tentative):

The first week after Labor Day

(Time TBD)

For more information, visit:

**[gifted.msu.edu/champ](https://gifted.msu.edu/champ)**

For information including extended course descriptions, payment options, and testing information, please visit **[gifted.msu.edu](https://gifted.msu.edu)**. Phone: 517.432.2129 / Fax: 517.884.5927 / Email: [gifted@msu.edu](mailto:gifted@msu.edu)



CHAMP is designed so that participating students will complete in two years the math content assigned in Michigan High School Content Expectations (HSCE) for all four years of high school and meet the Common Core National Standards. In their first year of CHAMP, students study Algebra 1 and Algebra 2. In the second year, CHAMP students study geometry and a standard pre-calculus course (trigonometry, analytic geometry, college algebra, and a brief introduction to calculus concepts).

Students must begin CHAMP with the study of Algebra 1. Bypassing one or more CHAMP courses is not allowed. Students completing CHAMP should be prepared to enroll in an honors high school calculus course, an advanced placement (AP) high school calculus course, or a college calculus course.

---

## CHAMP Schedule

Schedule:	Course:
Semester 1 (Fall, Year 1)	Algebra 1
Semester 2 (Spring, Year 1)	Algebra 2
Semester 3 (Fall, Year 2)	Geometry
Semester 4 (Spring, Year 2)	Pre-Calculus

---

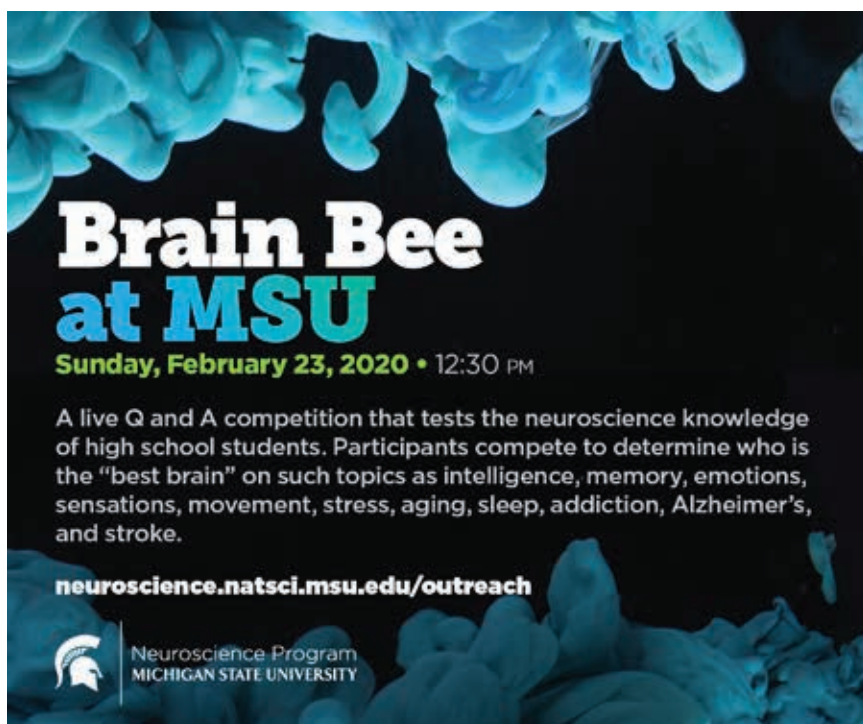
## Instructional Plan

- Students attend one class per week at their program location.
- Each class lasts 2.5 hours.
- Traditional high school curriculum is taught at an accelerated pace, requiring the student to learn to be motivated and self-guided outside of the classroom to complete substantial homework and be a mature, independent learner.
- There are regularly scheduled CHAMP labs outside of school hours intended to strengthen a student's understanding of program materials and concepts and to seek additional help as needed from program tutors.
- Students will be given an MSU account for the online course website to access CHAMP coursework/homework which should be checked daily.

---

## Student Evaluations

- Progress in mastering subject matter is monitored regularly through graded weekly homework assignments, quizzes, and tests.
- Parent-teacher conferences are scheduled mid-semester to give parents an opportunity to communicate in person with the teacher about their student's progress.
- Progress reports are made available to each student's family after fall and spring conferences.
- Grade reports are distributed to families and the student's school at the end of each semester.
  - Upon receipt of the grade report, your student's school should record the credit and grades on the student's high school transcript.
- Parents are welcome to contact the instructor at any time with questions or concerns.


The poster features a dark background with glowing blue, brain-like structures. The text is white and blue. The title 'Brain Bee at MSU' is prominent, with 'at MSU' in blue. Below it, the date and time are in green. The description is in white. The website URL is in white. The MSU logo and Neuroscience Program name are at the bottom left.

**Brain Bee  
at MSU**

**Sunday, February 23, 2020 • 12:30 PM**

A live Q and A competition that tests the neuroscience knowledge of high school students. Participants compete to determine who is the "best brain" on such topics as intelligence, memory, emotions, sensations, movement, stress, aging, sleep, addiction, Alzheimer's, and stroke.

**neuroscience.natsci.msu.edu/outreach**

 **Neuroscience Program  
MICHIGAN STATE UNIVERSITY**



# Intensive Studies in Humanities, Arts, Language, and Literature

(ISHALL – English)

FALL 2020 – SPRING 2022

ISHALL, in partnership with the Department of English, the Department of Writing, Rhetoric, and American Cultures, and University Outreach and Engagement at Michigan State University, provides classroom instruction for qualified gifted language art students applying in grades 6-10.

## Important Dates for ISHALL Program

### ISHALL at MSU

**Application deadline: May 7, 2020**

**Information meeting:** February 9, 2020

#### Classes held Tuesdays

First day of class (tentative):

Tuesday, August 25, 2020

7:45 – 10:10 am

MSU campus – Room TBD

### ISHALL – Southeast Michigan

**Application deadline: August 10, 2020**

**Information meeting:** March 25, 2020

#### Classes held Tuesdays

First day of class (tentative):

TBD

4:30 – 6:30 pm

For more information, visit:

**[gifted.msu.edu/ishall](https://gifted.msu.edu/ishall)**

For information including extended course descriptions, payment options, and testing information, please visit **[gifted.msu.edu](https://gifted.msu.edu)**. Phone: 517.432.2129 / Fax: 517.884.5927 / Email: [gifted@msu.edu](mailto:gifted@msu.edu)



**Because students are studying typical high school literature content, ISHALL curriculum may contain mature content that is not appropriate for all students. Parents need to review the sample curriculum available in the online ISHALL Program Handbook and determine if their student is ready for the ISHALL curriculum.**

ISHALL is designed so that participating students will complete in two years the English content assigned in Michigan High School Content Expectations (HSCE) for all four years of high school as well as meet the Common Core National Standards.

Students must begin ISHALL with the Grade 9 English curriculum. Bypassing one or more courses is not allowed. Students completing ISHALL should be prepared to enroll in an honors high school English course, an advanced placement (AP) high school English course, or a college English or writing course.

## ISHALL Schedule

Schedule:	Course:
Semester 1 (Fall, Year 1)	Grade 9 English curriculum
Semester 2 (Spring, Year 1)	Grade 10 English curriculum
Semester 3 (Fall, Year 2)	Grade 11 English curriculum
Semester 4 (Spring, Year 2)	Grade 12 English curriculum

## Instructional Plan

- Students attend one class per week at their program location.
- Each class lasts 2.5 hours.
- Traditional high school curriculum is taught at an accelerated pace, requiring the student to learn to be motivated and self-guided outside of the classroom to complete substantial homework and be a mature, independent learner.
- There are regularly scheduled ISHALL labs outside of school hours intended to strengthen a student's understanding of program materials and concepts and to seek additional help as needed from program tutors.
- Students will be given an MSU account for the online course website to access ISHALL coursework/homework which should be checked daily.

---

## Student Evaluations

- Progress in mastering subject matter is monitored regularly through graded weekly homework assignments, quizzes, and tests.
- Parent-teacher conferences are scheduled mid-semester to give parents an opportunity to communicate in person with the teacher about their student's progress.
- Progress reports are made available to each student's family after fall and spring conferences.
- Grade reports are distributed to families and the student's school at the end of each semester.
  - Upon receipt of the grade report, your student's school should record the credit and grades on the student's high school transcript.
- Parents are welcome to contact the instructor at any time with questions or concerns.





## **Amo Linguam Latinam** (ALL – Latin)

FALL 2020 – SPRING 2022

ALL, in partnership with the Department of Writing, Rhetoric, and American Cultures, and University Outreach and Engagement at Michigan State University, provides classroom instruction for qualified gifted world language students applying in grades 6-10.

---

### **Important Dates for ALL Program**

#### **ALL at MSU**

**Application deadline: May 7, 2020**

**Information meeting:** February 9, 2020

**Classes held in person on 1st and 3rd Tuesday; 2nd and 4th Tuesday held live via online video (Zoom)**

First day of class (tentative):

Thursday, August 27, 2020

4:00 pm – 6:00 pm

MSU Campus –Room TBD

For more information, visit:

**[gifted.msu.edu/all](https://gifted.msu.edu/all)**

For information including extended course descriptions, payment options, and testing information, please visit [gifted.msu.edu](https://gifted.msu.edu). Phone: 517.432.2129 / Fax: 517.884.5927 / Email: [gifted@msu.edu](mailto:gifted@msu.edu)



ALL is designed so that the participating students can complete in two years the Latin language content assigned in Michigan High School Content Expectations (HSCE) for all four years of high school as well as meet the Common Core National Standards. Every semester of the GATE Latin program corresponds to one year of high school Latin.

Students must begin ALL with the Grade 9 Latin curriculum. Bypassing one or more courses is not allowed. Students completing ALL will be prepared to take the advanced placement (AP) Latin exam, or a college Latin course.

---

## ALL Schedule

Schedule:	Course:
Semester 1 (Fall, Year 1)	Latin 1
Semester 2 (Spring, Year 1)	Latin 2
Semester 3 (Fall, Year 2)	Latin 3
Semester 4 (Spring, Year 2)	Latin 4

---

## Instructional Plan

- Students attend one class per week at their program location.
- Each class lasts 2 hours.
- Traditional high school curriculum is taught at an accelerated pace, requiring the student to learn to be motivated and self-guided outside of the classroom to complete substantial homework.
- There are regularly scheduled ALL labs outside of school hours intended to strengthen a student's understanding of program materials and concepts and to provide additional help as needed from program tutors.
- Students will be given an MSU account for the online course website to access ALL coursework/homework which should be checked by parents regularly.

---

## Student Evaluations

- Progress in mastering subject matter is monitored regularly through graded weekly homework assignments, quizzes, and tests.

- Parent-teacher conferences are scheduled mid-semester to give parents an opportunity to communicate in person with the teacher about their student's progress.
- Progress reports are made available to each student's family after fall and spring conferences.
- Grade reports are distributed to families and the student's school at the end of each semester.
  - Upon receipt of the grade report, your student's school should record the credit and grades on the student's high school transcript.
- Parents are welcome to contact the instructor at any time with questions or concerns.



**Neuroscience  
Fair at MSU**

**Saturday, April 13, 2020 • 12 - 4 PM**

Explore cool neuroscience activities including learning how our senses can be tricked, playing brain games, and even touching a real human brain! Experience neuroscience firsthand at this free event with fun activities for all ages.

**[neuroscience.natsci.msu.edu/outreach](http://neuroscience.natsci.msu.edu/outreach)**

 **Neuroscience Program  
MICHIGAN STATE UNIVERSITY**



NEW!

# Michigan's Accelerated NihonGo for Americans

(M.A.N.G.A. – Japanese)

FALL 2020 – SPRING 2023

M.A.N.G.A., in partnership with the Office of University Outreach and Engagement at Michigan State University, provides classroom instruction for qualified gifted students applying in grades 6-9.

---

## Important Dates for M.A.N.G.A. Program

---

### M.A.N.G.A. – Southeast Michigan

**Application deadline: August 10, 2020**

**Information meeting:** March 25, 2020

#### Classes held Thursdays

First day of class (tentative):

The first week after Labor Day

(Time TBD)

Southeast Michigan

For more information, visit:

**[gifted.msu.edu/manga](https://gifted.msu.edu/manga)**

For information including extended course descriptions, payment options, and testing information, please visit **[gifted.msu.edu](https://gifted.msu.edu)**. Phone: 517.432.2129 / Fax: 517.884.5927 / Email: [gifted@msu.edu](mailto:gifted@msu.edu)



M.A.N.G.A. is designed so that participating students can complete in three years the Japanese language content assigned in the Michigan High School Content Expectations (HSCE) for all four years of high school as well as meet the Common Core National Standards. Semesters 5-6 correspond to a high school AP Japanese course.

Students must begin M.A.N.G.A. with the Japanese 1 curriculum. Bypassing one or more courses is not allowed. Students completing M.A.N.G.A. should be prepared to take the Japanese Language and Culture advanced placement (AP) exam, or a college Japanese course.

---

## M.A.N.G.A. Schedule

Schedule:	Course:
Semester 1 (Fall, Year 1)	Japanese 1
Semester 2 (Spring, Year 1)	Japanese 2
Semester 3 (Fall, Year 2)	Japanese 3
Semester 4 (Spring, Year 2)	Japanese 4
Semester 5 (Fall, Year 3)	AP Japanese Prep
Semester 6 (Spring, Year 3)	AP Japanese Prep

---

## Instructional Plan

- Students attend one class per week at their program location.
- Each class lasts 2.5 hours.
- Traditional high school curriculum is taught at an accelerated pace, requiring the student to learn to be motivated and self-guided outside of the classroom to complete substantial homework.
- There are regularly scheduled M.A.N.G.A. labs outside of school hours intended to strengthen a student's understanding of program materials and concepts and to seek additional help as needed from program tutors.
- Students will be given an MSU account for the online course website to access M.A.N.G.A. coursework/homework which should be checked daily.

---

## Student Evaluations

- Progress in mastering subject matter is monitored regularly through graded weekly homework assignments, quizzes, and tests.
- Parent-teacher conferences are scheduled mid-semester to give parents an opportunity to communicate in person with the teacher about their student's progress.
- Progress reports are made available to each student's family after fall and spring conferences.
- Grade reports are distributed to families and the student's school at the end of each semester.
  - Upon receipt of the grade report, your student's school should record the credit and grades on the student's high school transcript.
- Parents are welcome to contact the instructor at any time with questions or concerns.





## Langue pour Étudiants Avancés de Français (LEAF – French)

LEAF, in partnership with the Department of Romance and Classical Languages and University Outreach and Engagement at Michigan State University, provides classroom instruction change for students applying in grades 6-10 who have advanced skills in language arts/French.

**LEAF is on hiatus for Fall 2020. Please check back in January 2021 for the LEAF program starting Fall 2021-Spring 2023.**

For more information, visit:

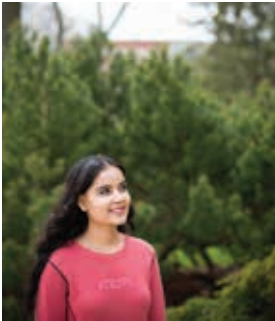
**[gifted.msu.edu/leaf](https://gifted.msu.edu/leaf)**

For information including extended course descriptions, payment options, and testing information, please visit **[gifted.msu.edu](https://gifted.msu.edu)**. Phone: 517.432.2129 / Fax: 517.884.5927 / Email: [gifted@msu.edu](mailto:gifted@msu.edu)





## Pioneer



## Innovate



## Engage

**MICHIGAN STATE**  
UNIVERSITY

Honors College

[honorscollege.msu.edu](https://honorscollege.msu.edu)

# Academic Year Program Details

---

## Responsibilities of Participants

---

### Students

- Attend classes regularly
- Complete assigned homework regularly
- Keep parent(s)/guardian(s) informed of weekly graded homework and quizzes
- Attend labs as desired or assigned
- Exhibit appropriate classroom behavior
- Maintain satisfactory level of performance in regular school course work
- Log in daily to online class website

---

### Parents/Guardians

- Transport student to and from class
- Attend an orientation session and mid-semester conferences
- Support and encourage the student
- Review weekly graded homework and quizzes with the student
- Communicate any problems to the instructor
- Provide student with access to a computer, a printer, and internet access
- Contact and work with school officials to facilitate credit transfer and individual learning plans

---

### Local School District

- Release students to attend class at designated location during their school day where applicable
- Agree that these classes will be accepted in lieu of in-school required subject classes

- Recognize this course of study and record credits and grades on high school transcripts
  - Grant high school credit for demonstrated mastery of content (up to four years of the subject)
  - Identify a local district contact person for the program
- 

## **What to Expect From Your GATE Program**

GATE programs are designed to provide educational experiences that allow gifted students to develop intellectually, to cultivate social relationships, and to expand their understanding of the world.

---

## **Academic Integrity**

GATE programs adhere to Michigan State University expectations about academic integrity.

Academic integrity is honest and responsible scholarship. Students are expected to submit original work and give credit to other people's ideas. Maintaining academic integrity involves:

- Creating and expressing your own ideas in course work
- Acknowledging all sources of information
- Completing assignments independently or acknowledging collaboration
- Accurately reporting results when conducting your own research or with respect to labs
- Honesty during examinations

Academic integrity is the foundation of university success. Learning how to express original ideas, cite sources, work independently, and report results accurately and honestly are skills that carry students beyond their academic career. Academic dishonesty not only cheats the student of valuable learning experiences, but can result in a failing grade on assignments, a failing grade in a course, or even expulsion from the university for the student.



---

## Lessons and Class Structure

The instructor prepares lessons that provide students with a conceptual-theoretical framework for the content of the course. Practical examples are discussed to assist student understanding and work toward developing mastery of a particular skill or concept. New material is introduced at a pace much faster than occurs in the usual classroom. Gifted students typically require this pace in order to remain challenged.

An example of class structure may include the instructor reviewing unresolved homework assignments, introducing new material, giving spot quizzes and longer tests, and assigning homework that considers both previously studied material and concepts just introduced. Homework assignments, taking the average student six to eight hours to complete, are collected at the beginning of each class. This homework is graded, commented on by the professor or an assistant, and returned to and discussed with the student before the end of that day's class or the next class.

Experience suggests that some students begin a program expecting to be able to work through homework quickly, and they can become frustrated when they are unsure of what to do immediately. Through the process of adjusting to the program students will learn perseverance with mental tasks. Other students tend to view any effort that is less than 100% correct as a failure. As the course proceeds, these students develop a more mature perspective on learning. Homework helps to solidify concepts presented in class and to provide a realistic challenge, requiring students to develop problem-solving skills and to persevere in the face of less-than-instant-success. Students may feel overwhelmed at first by the volume of the homework assigned, but most adjust to what is required.

Because of the accelerated and demanding nature of the Academic Year programs, students will only be allowed to begin one Academic Year program per year. Students are welcome to apply to more than one Academic Year program—if accepted to multiple programs, they can choose which one they would like to enroll in for the upcoming year, and then reapply for another program the following year. However, please note that each application requires a non-refundable \$50 application fee.

---

# Costs and Payment

These fees apply to:

**CHAMP** (all locations), **ISHALL** (all locations), **ALL**, and **M.A.N.G.A.**.

---

## Application fees

**A non-refundable \$50 application fee is required for each program.**

Please note that this fee must be paid **BEFORE** any information is shared or reviewed on your application.

---

## Tuition

**Tuition is \$1,500 per year**

- \$750 is due within 7 days of program billing to confirm attendance.
  - \$750 is due within 14 days of program billing. Please refer to acceptance letter for due dates. Failure to pay tuition by the due dates will result in immediate withdraw from the program. No refunds will be given.
  - Please note that tuition payments are non-refundable.
  - Students accepted within 14 days of the program start will be subject to an abbreviated payment deadline.
- 

## Financial aid

Tuition assistance from the GATE office may be available to those with financial need. Fill out the Financial Aid page of the application when you apply. Parents should also contact their student's school to learn if any financial support is provided by the school. Financial aid recipients qualify to have any textbooks and field trips covered by the GATE office.

---

## School tuition process

Many school districts in and around GATE program areas contribute all or part of a student's tuition. Upon acceptance, you will receive a form for your student's school to complete which includes billing information. This form must be completed and returned to the GATE office within 14 days of receipt. At that time, you will be responsible for any tuition that the school will not pay upon receipt.

**NOTE: If your student's school has paid all or part of their tuition, you are responsible for reimbursing them directly if your student leaves the program for any reason.**

---

## How to pay

Payments can be made online at **[gifted.msu.edu/payment](https://gifted.msu.edu/payment)**.

Please contact the GATE office for check submission instructions.

---

## Other costs

Parents are responsible for providing transportation, as well as textbooks, classroom supplies and a TI-83+ calculator for CHAMP students. Some programs may organize optional field trips with attendance costs to be paid by the family.

---

## Cancellation policy

All classes are subject to a minimum enrollment of 20 students and may be canceled at the discretion of the GATE office. Your application fee and any paid tuition will be refunded.

---

## Refunds

**No fees or tuition will be refunded unless the GATE office cancels the program.**


---

## Drops

All requests for withdrawals must be submitted in writing to the Gifted and Talented Education office via e-mail at **[gifted@msu.edu](mailto:gifted@msu.edu)**.

**No fees or tuition will be refunded.**





# **GATE Academic Year Information Meetings**

## **Academic Year Information Meeting**

**Sunday, February 9, 2020**

11:00 am – 2:00 pm

MSU Business College

## **Southeast Michigan Information Meeting**

**Wednesday, March 25, 2020**

6:00 pm – 8:00 pm

MSU Novi Tollgate Education Conference Center





# Summer Programs

GATE summer programs offer students the chance to experience advanced non-credit coursework and the college campus alongside their high achieving peers. Summer program applications are reviewed on a rolling basis and classes fill up quickly. Apply early!

## Summer Programs Application Guideline

If you are <b>currently</b> in...	...you can apply for the following Summer Programs:
Grades 2	<b>GUPPY 2</b>
Grades 3 or 4	<b>GUPPY 3-4</b>
Grades 5 or 6	<b>GUPPY 5-6; Intensive Studies:</b> Animation: A Digital Artistry Experience (6th grade only)
Grades 7	<b>MST@MSU; Intensive Studies:</b> PRE-MED ED • Animation: A Digital Artistry Experience • Science Fiction and Fantasy Short Story Writing • Technical Writing in GIS, Data Visualization, and Immersive Displays
Grade 8	<b>MST@MSU; Intensive Studies:</b> PRE-MED ED • Aircraft Piloting • Animation: A Digital Artistry Experience • Mathematical Machine Learning • Algorithms and Artificial Intelligence • Science Fiction and Fantasy Short Story Writing • Technical Writing in GIS, Data Visualization, and Immersive Displays • PRE-LAW: LitiGATE
Grade 9	<b>MSTL; Intensive Studies:</b> Animation: A Digital Artistry Experience • Mathematical Machine Learning • Algorithms and Artificial Intelligence • Aircraft Piloting • PRE-MED ED • Science Fiction and Fantasy Short Story Writing • Technical Writing in GIS, Data Visualization, and Immersive Displays • PRE-LAW: LitiGATE • Sustainable Agriculture and Remote Sensing
Grade 10	<b>MSTL; Intensive Studies:</b> Aircraft Piloting • Mathematical Machine Learning • Algorithms and Artificial Intelligence • Science Fiction and Fantasy Short Story Writing • Technical Writing in GIS, Data Visualization, and Immersive Displays • PRE-LAW: LitiGATE • Aqueous and Environmental Geochemistry • Sustainable Agriculture and Remote Sensing
Grade 11	<b>Intensive Studies:</b> Aircraft Piloting • Algorithms and Artificial Intelligence • Science Fiction and Fantasy Short Story Writing • Technical Writing in GIS, Data Visualization, and Immersive Displays • PRE-LAW: LitiGATE • Aqueous and Environmental Geochemistry • Sustainable Agriculture and Remote Sensing



# GATE Summer Programs Information Meeting

**Sunday, March 22, 2020**

12:00 pm – 2:00 pm

MSU Business College



## Gifted University for Parents and Precocious Youth (GUPPY)

GUPPY is a weekend program offering students in grades 2-6 a variety of accelerated exploratory educational presentations and hands-on experiences in Michigan State University's laboratories and classrooms.

---

### Important Dates for GUPPY Program

#### ..... **GUPPY**

**Application deadline: May 7, 2020**

##### **GUPPY 2 - NEW!**

June 26– 28, 2020

##### **GUPPY 3-4**

June 19-21, 2020

June 26-28, 2020

July 20-24, 2020 (NEW! Half day, week long)

July 24-26, 2020

##### **GUPPY 5-6**

June 19-21, 2020

June 26-28, 2020

July 20-24, 2020 (NEW! Half day, week long)

July 24-26, 2020

#### ..... **Parent University**

NEW – Multiple Sessions!

##### **June 21, 2020**

12:30pm – 3:30pm

##### **June 28, 2020**

12:30pm – 3:30pm

##### **July 24, 2020**

9:00am – 12:00pm

For more information, visit:

**[gifted.msu.edu/guppy](https://gifted.msu.edu/guppy)**

For information including extended course descriptions, payment options, and testing information, please visit **gifted.msu.edu**. Phone: 517.432.2129 / Fax: 517.884.5927 / Email: [gifted@msu.edu](mailto:gifted@msu.edu)



GUPPY is designed for young gifted and talented students to attend classes taught by MSU faculty and subject experts at Michigan State University for the weekend. This GATE program will offer young gifted students a variety of accelerated exploratory educational presentations and hands-on experiences in MSU's laboratories and classrooms.

---

## Commuting

Local families commute daily by dropping off and picking up their student each day from campus.

---

## Lodging options

Visiting families may stay overnight locally at a special MSU rate or make reservations on their own with another hotel of their choice. Families are responsible for the cost of their hotel stay.

---

## GUPPY's Parent University

Parents, save the date! You are invited to attend GUPPY's Parent University, which provides informational presentations conducted by gifted experts. Parent University occurs on **June 21, June 28, and July 24**. Various topics related to gifted education and raising a gifted child will be discussed. Past topics include: Gifted 101, Roadmap to Advocacy, IQ Testing, and Spatial Learners. There will also be an Ask the Gifted Expert Q&A session where the speakers will answer parent questions. All GUPPY parents are welcome to attend any and all Parent U sessions.

---

## GUPPY 2 Track Options

Students in Grade 2 will take the classes in the track below.

Space is limited and students are accepted on a first-come first-served basis.

**For full descriptions, see [gifted.msu.edu/guppy](http://gifted.msu.edu/guppy)**

---

### GUPPY 2: June 26-28, 2020 – NEW!

Track	Class 1 8:30 – 9:45 am	Class 2 10:05 – 11:20 am		Class 3 12:45 – 2:00 pm	Class 4 2:20 – 3:35 pm
E	<b>Coding Connections:</b> Build and Expand Coding Skills Using Spheros and Robots	<b>Night at the Art Museum</b>	<b>Lunch and Coordinated Activity Time</b>	<b>Learning Math From Zero to Infinity</b>	<b>Coordinate Graphing:</b> Creating Pictures Using Mathematics

# GUPPY 3-4 Track Options

Students in Grades 3-4 will take the classes in one of the tracks below.

Space is limited, and each track will be filled on a first-come first-served basis.

**For full descriptions, see [gifted.msu.edu/guppy](http://gifted.msu.edu/guppy)**

## GUPPY 3-4: June 19-21, 2020

Track	Class 1 8:30 – 9:45 am	Class 2 10:05 – 11:20 am		Class 3 12:45 – 2:00 pm	Class 4 2:20 – 3:35 pm
A	<b>Mathematical Mysteries:</b> Quick and Clever Problem Solving	<b>Theatre Arts:</b> Dancing, Singing, and Acting!	Lunch and Coordinated Activity Time	<b>Coding Game Design with JavaScript Programming</b> Including Hello World	<b>The Natural Beauty of Art</b>
B	<b>Space as a New Frontier in Art</b>	<b>3D Mathematics</b>		<b>The Magic of Milk Science:</b> Sweet Eats and Treats of Milk	<b>Geocaching:</b> The High-Tech Treasure Hunt

## GUPPY 3-4: June 26-28, 2020

Track	Class 1 8:30 – 9:45 am	Class 2 10:05 – 11:20 am		Class 3 12:45 – 2:00 pm	Class 4 2:20 – 3:35 pm
F	<b>Math is Everywhere:</b> Patterns in Nature and Applying Mathematical Design to Art	<b>Reverse Engineering:</b> Take Apart and Look Inside Technologies and Appliances and Explore Their Creations	Lunch and Coordinated Activity Time	<b>Neuroscience:</b> What's the Big Deal About the Brain?	<b>Backstage Pass:</b> TV, Radio, and Sports Arena

## GUPPY 3-4: July 20-24, 2020

Track	Class 1 8:30 – 9:30 am	Class 2 9:45 – 10:45 am	Class 3 11:00 am – 12:00 pm
H	<b>Math Olympiad Jr.:</b> Math Problem Solving Contests	<b>World of Art and Design</b>	<b>The Biology and Life Cycle of Plants</b>
I	<b>Your Life as Art, but ANIMATED</b>	<b>3-D Printing:</b> Design, Model, and Print	<b>Electricity and Electronics</b>

## ..... GUPPY 3-4: July 24-26, 2020

Track	Class 1 8:30 – 9:45 am	Class 2 10:05 – 11:20 am		Class 3 12:45 – 2:00 pm	Class 4 2:20 – 3:35 pm
L	<b>Fibonacci Sequence:</b> Understanding the Sequence and the Sum to Develop the Logic	<b>"Lego" of Your Poetry Fears:</b> Writing Poetry is as Easy as Building Legos!	Lunch and Coordinated Activity Time	<b>Survivor! Survivor!</b> Basic skills for Wilderness Survival	<b>Candy and it's Chemistry:</b> Chocolate, Pop Rocks & Candy Conflagration
M	<b>Who Dunnit?</b> Reading Critically to Solve a Mystery.	<b>Brain Benders:</b> Puzzles and Games to Challenge Your Mind		<b>Chemistry:</b> Acidic and Basic Chemical Reactions	<b>Science Olympiad Exploration</b>

## GUPPY 5-6 Track Options

Students in Grades 5-6 will take the classes in one of the tracks below.

Space is limited, and each track will be filled on a first-come first-served basis.

**For full descriptions, see [gifted.msu.edu/guppy](http://gifted.msu.edu/guppy)**

## ..... GUPPY 5-6: June 19-21, 2020

Track	Class 1 8:30 – 9:45 am	Class 2 10:05 – 11:20 am		Class 3 12:45 – 2:00 pm	Class 4 2:20 – 3:35 pm
C	<b>Nuclear Astrophysics:</b> Fusion, Fragmentation, and Radioactive Decay	<b>Wilderness:</b> Survival Skills in the Great Outdoors	Lunch and Coordinated Activity Time	<b>Real World Algebra:</b> Algebra + Problems= Real World Connections	<b>Introduction to Python Programming Language Using Minecraft</b>
D	<b>Engineering:</b> Spatial Reasoning and the Design Cycle	<b>Advanced Coding Game Design with JavaScript Programming</b> Including Hello World		<b>A Mythical Journey in Art</b>	<b>Brain Training with Area Mazes:</b> Simple Math and Clever Logic

## GUPPY 5-6: June 26-28, 2020

Track	Class 1 8:30 – 9:45 am	Class 2 10:05 – 11:20 am		Class 3 12:45 – 2:00 pm	Class 4 2:20 – 3:35 pm
G	<b>Science Olympiad:</b> Prepare to Compete in One of the Premier Science Competitions	<b>Ham Radio:</b> Learn the Amateur Bands to Talk across Town, around the World, or Even into Space	Lunch and Coordinated Activity Time	<b>Green Screen on the Scene:</b> Take your Digital Story Just About Anywhere	<b>Computer Programming:</b> Java and Python Scripting

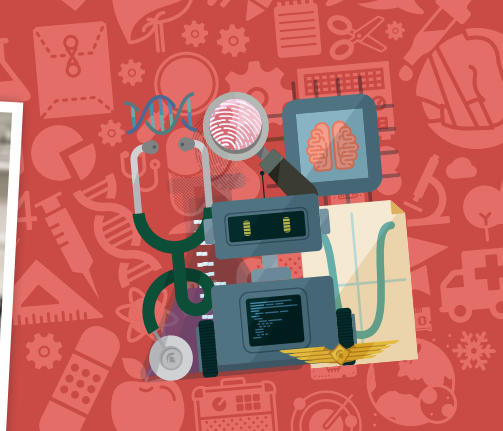
## GUPPY 5-6: July 20-24, 2020

Track	Class 1 8:30 – 9:30 am	Class 2 9:45 – 10:45 am	Class 3 11:00 am – 12:00 pm
J	<b>Forensic Science Jr.</b> <b>Forensic Science Jr.:</b> Love a good mystery? Learn How Science Helps You Solve It.	<b>Anatomy and Physiology:</b> Exploration of the Human Body	<b>Art's Abstract Side of Life</b>
K	<b>Biology of Animal Behavior and Response</b>	<b>Force and Physics=Fun</b>	<b>Fashion Institute:</b> From Designers to Creations, We Love Fashion from the 70's!

## GUPPY 5-6: July 24-26, 2020

Track	Class 1 8:30 – 9:45 am	Class 2 10:05 – 11:20 am		Class 3 12:45 – 2:00 pm	Class 4 2:20 – 3:35 pm
N	The Culture of Art	Pilot and Airplane Exploration: From Alpha to Zulu, is Becoming a Pilot for You?	Lunch and Coordinated Activity Time	Watch out Percy Jackson! Learn to write Narratives like a Demi-God!	Computer Programming: Java and Python Scripting
O	Pre Med Jr.	Pre Med Jr.		Pre Med Jr.	Pre Med Jr.





## Intensive Studies for Gifted and Talented (IS4GT)

A one-week advanced program in a specific concentrated curriculum for gifted, IS4GT is an option for 6th-11th grade students. Classes focus on one main topic for the week.

---

### Important Dates for IS4GT Program

#### IS4GT

**Application deadline: May 7, 2020**

#### IS4GT Program Dates

##### June 21-26, 2020

- PRE-LAW: LitiGATE, An Intensive Study in Prosecuting and Defending A Criminal Case
- Mathematical Machine Learning
- Aircraft Piloting
- Science Fiction and Fantasy Short Story Writing

##### July 5-10, 2020

- PRE-MED ED
- Algorithms and Artificial Intelligence
- Aqueous and Environmental Geochemistry

##### July 19-24, 2020

- Animation: A Digital Artistry Experience
- Technical Writing in GIS, Data Visualization and Immersive Displays
- Sustainable Agriculture and Remote Sensing

For more information, including course descriptions, visit:

**[gifted.msu.edu/is4gt](http://gifted.msu.edu/is4gt)**

For information including extended course descriptions, payment options, and testing information, please visit **gifted.msu.edu**. Phone: 517.432.2129 / Fax: 517.884.5927 / Email: [gifted@msu.edu](mailto:gifted@msu.edu)

---

## IS4GT Course Offerings for **June 21-26, 2020**

Please Note: Listed grades are the grades that students are in when they are applying.

---

### **PRE-LAW: LitiGATE, An Intensive Study in Prosecuting and Defending A Criminal Case**

**Grades 8-11**

- Partnership with Western Michigan's Cooley Law School
- Students will learn to read a case file, a criminal statute, and a criminal complaint.
- Students will create a case theme, observe skills necessary for opening statements and closing arguments, effective techniques for direct and cross-examination and proper methods for introducing items into evidence.
- After observing the tutorials, students will practice what they have learned by performing collaborative and interactive exercises designed to prepare for participating in a mock trial. Instructors will provide feedback and constructive critiques to help prepare the students for their final mock trial.

---

### **Mathematical Machine Learning**

**Grades 8-10**

- Covers key mathematical concepts that underpin modern machine learning
- Will serve as a tutorial to newcomers that have no background in calculus, linear algebra, or probability theory
- Introduces relevant mathematical concepts needed to understand machine learning methods, with a minimum of prerequisites

---

### **Aircraft Piloting**

**Grades 8-11**

- Flight lesson in a Diamond DA20 aircraft
- Learn about aircraft systems, weather, the U.S. air traffic control system, airport environments and federal aviation regulations

---

### **Science Fiction and Fantasy Short Story Writing**

**Grades 7-11**

- Learn to examine, analyze, and investigate short sample texts
- Focus on the intensive creation of your own short fiction in this genre

---

IS4GT Course Offerings for  
**July 5-10, 2020**

Please Note: Listed grades are the grades that students are in when they are applying.

.....

## **PRE-MED ED**

### **Grades 7-9**

- Program intended for students interested in the health care field
- Discover medical specialties through hands-on demonstrations and activities, such as a medical escape room, phlebotomy, and intubation
- Learn Physiology to see how the body functions

.....

## **Algorithms and Artificial Intelligence**

### **Grades 8-11**

- Modeling individual decisions; defining decision; deciding what to decide
- Analyzing a single option: identifying factors; identifying relationships; building connections; and scoring the option
- Comparing options; selecting an option; testing the algorithm; summarizing the decision process
- Changing a decision; monitoring a decision: time frames and the hybrid approach

.....

## **Aqueous and Environmental Geochemistry**

### **Grades 9-11**

- Use a variety of state-of-the-art equipment for collecting in situ river and groundwater data
- Collect water samples for hands on wet chemistry analysis in MSU's geochemistry laboratory.
- Create computer models of these complex environmental systems using the data we collected in the field and laboratory.

---

IS4GT Course Offerings for  
**July 19-24, 2020**

Please Note: Listed grades are the grades that students are in when they are applying.

---

**Animation: A Digital Artistry Experience**

**Grades 6-9**

- Use motion capture to create realistic, complex movement
- Learn basic rigging for 3D characters and creatures
- Observe motion and weight and translate those observations to animation

---

**Technical Writing in GIS,  
Data Visualization, and Immersive Displays**

**Grades 7-11**

- Analyze spatial location and organizes layers of information into visualizations using maps and 3D scenes
- Make maps that communicate, perform analysis, share information, and solve complex problems around the world

---

**Sustainable Agriculture and Remote Sensing**

**Grades 9-11**

- Learn about the fast moving and high-tech field of modern agriculture directly from industry leaders and contemporary research experts.
- Participate the analysis of high-resolution satellite images and explore the advances in air and space-borne platforms in obtaining crop and soil data.
- Tour the MSU research farms and launch a state-of-the-art research drone to collect our own data for analysis.
- Learn about the future of farming including topics such as sustainable agriculture, food security, crop yield forecasting, and precision farming.
- Assessing the impact of climate variability and change on agricultural production systems.





## Math, Science, and Technology (MST@MSU)

University is a one-week summer commuter or residential program for academically talented students who are currently in grade 7 or 8 during the 2019-2020 school year. To sign up for the residential option, students must be a minimum age of 12 years old.

NOTE: MST/MSTL class and workshop choices are subject to change or cancellation at the discretion of the GATE office. Such changes **DO NOT** warrant refunds or withdrawals.

**We cannot guarantee placement in any of the classes or workshops offered.**

## Important Dates for MST Program

### MST

**Application deadline: May 7, 2020**

**Program Dates: July 12-17, 2020**

#### July 12, 2020

**1:00 – 2:30 pm**

Check-in at residential hall

**3:00 – 4:00 pm**

Orientation for parents and students (including commuter)

#### July 13-17, 2020

**Classes held Monday – Friday**

9:00 am – 5:00 pm

Lunch included for all students

(including commuter)

Extended day is available for commuter students at an additional cost.

#### July 17, 2020 (Friday)

**Around 5:00 pm**

Check-out and  
Closing Ceremony  
(all students and parents)

For more information, including course descriptions, visit:

**[gifted.msu.edu/mst](https://gifted.msu.edu/mst)**

The program is held at the MSU campus and offers a variety of topics within mathematics, science, and technology, focusing real-world applications in these areas. The goal is to match the intellectual abilities of talented students with rigorous and challenging course work, which provides enrichment but does not duplicate or accelerate course work that is part of the regular middle school curriculum. Students will participate in two classes and one workshop. See descriptions on the following pages. Students will be asked to rank their preference of topics.

---

## **MST Class Options** (Students will receive 2)

---

### **Chemistry: Exploring our Atomic World**

- Build a working wet cell battery
- Use liquid nitrogen to flash freeze "Dippin' Dots"
- Use electrolysis to chemically separate water into hydrogen gas and oxygen gas
- Participate in "hands-on" laboratory activities

---

### **Math Olympiad**

- Develop strategies to solve common math problems typically found in local, regional and national contests
- Learn to appreciate the art of mathematical problem-solving while strengthening the ability to employ problem-solving strategies
- Be exposed to mathematical concepts that might not otherwise be encountered in the public schools
- Math topics covered: Exponents and Logarithms, Complex Numbers, Linear Equations, Proportions, Number Theory, Quadratic Equations, Special Factorizations and Clever Manipulations, Circles, and Angles

---

### **Raspberry Pi**

- Unbox and setup a new Raspberry Pi 4 model B
- Install and explore an Integrated Development Environment (Visual Studio Code)
- Learn to use GitHub for code version control (functional email address required)
- Create a web application in the Java programming language
- Create scripts in the Python programming language
- Use Python to manipulate the world in Minecraft

---

## **Nuclear Astrophysics**

- A tour of NSCL's rare isotope research areas
- Latest research in nuclear astrophysics
- The origins of the elements – Big Bang nucleosynthesis, stellar fusion, explosive capture processes
- Careers in research science (or, "people will pay you to learn things")

---

## **Anatomy and Physiology: An exploration of the human body**

- Examine real organs
- Monitor vital signs
- Perform an EKG
- Test your lung function

---

## **Media Creation in the Digital Age World**

- Go through the ins and outs of media creation starting with the basics and working up to professional level
- Creating content that leads and bringing a perspective that stands out from what everyone else is doing
- Create content to tell a story for a purpose

---

## **Water, Water Everywhere...or is it?**

- Learn history of water use from ancient times to present
- Explore what really is in water
- Analyze samples of water quality and composition

---

# MST Workshop Options (Students will receive 1)

---

## Fun with Physics

- Learn about the amazing noises the high-voltage sparks emitted by Tesla coil produce
- Learn about both linear and circular polarization of light
- Learn about a wide range of topics related to vibrations and waves from sunsets to musical instruments

---

## Archery and Air Rifle

- Learn the fundamentals and drills to increase confidence and proficiency
- Introduced to the recurve bow, compound bow, and crossbow
- For air rifle, students will learn bench-rest position, practice shooting fundamentals, confirm zero, and practice shots using practice target

---

## Visual Arts

- Learn about the mediums being used and the history behind the art pieces
- Connect movements to presentations containing various images, videos, and information
- Create work outside (weather permitting)

---

## The Chemistry of Cooking

- Learn the chemistry of cooking
- The fundamental biological, chemical and physical scientific principles associated with the study of foods
- The fundamental and relevant chemistry and functionality of the major food constituents

---

## Composing Electronic Music

- Learn the basics of recording, editing, and sound creation
- Compose original music
- Learn skills in order to continue to create electronic music in the future





# Math, Science, Technology, and Leadership (MSTL)

The Mathematics, Science, Technology, and Leadership (MSTL) program at Michigan State University is a two-week summer commuter or residential program for academically talented students who are currently in grades 9 or 10 during the 2019-2020 school year.

NOTE: MST/MSTL class and workshop choices are subject to change or cancellation at the discretion of the GATE office. Such changes **DO NOT** warrant refunds or withdrawals.

**We cannot guarantee placement in any of the classes or workshops offered.**

## Important Dates for MSTL Program

### MSTL

**Application deadline: May 7, 2020**

**Program Dates: July 12-24, 2020**

#### July 12, 2020

**1:00 – 2:30 pm**

Check-in at residential hall

**3:00 – 4:00 pm**

Orientation for parents and students (including commuter)

#### July 13-17, 2020 and July 20-24, 2020

**Classes held Monday – Friday**

9:00 am – 5:00 pm

Lunch included for all students (including commuter)

Extended day is available for commuter students at an additional cost.

#### July 24, 2020 (Friday)

**Around 5:00 pm**

Check-out and Closing Ceremony (all students and parents)

For more information, including course descriptions, visit:

**[gifted.msu.edu/mstl](https://gifted.msu.edu/mstl)**

The MSTL program offers advanced curriculum, as well as a leadership workshop. Students will take two classes that have been designed to stimulate students to learn about new developments in mathematics, science, and technology, and to explore related career fields. Students will also take one leadership workshop which will introduce them to concepts and skills required to be a leader in their fields. See class and workshop descriptions on the following pages. Students will be asked to rank their preference of topics.

---

## **MSTL Class Options** (Students will receive 2)

### **Molecular Biology: Bacterial Behavior and Communication**

- By studying how chemotaxis works, students will discover the simple molecular mechanisms that form the building blocks of sophisticated signaling networks
- Using computer simulations, explore how signaling networks controls bacterial behaviors in complex environments

### **Fascinating Physics**

- Learn how to effectively communicate physics concepts to others
- Learn how to apply algebra and physics to gain a better understanding of rotational motion and interference patterns produced by laser light
- Learn how to apply mathematics and computers to measure Earth's gravitational acceleration, to explore circuits with LED's, and to investigate resonant frequencies of a vibrating string

### **Mathematics of Machine Learning**

- Learn extensive list of basic mathematical definitions and concepts needed in abstract mathematics
- Large variety of math examples and problems to work through

### **Number Theory**

- Presents the basic techniques of mathematical proof and the logic behind them
- Will help students think like mathematicians from the very beginning
- The class will contain an extensive list of basic mathematical definitions and concepts needed in abstract mathematics

---

## Capture your Story on Social Media

- Go through the ins and outs of media creation starting with the basics and working up to professional level
- Creating content that leads and bringing a perspective that stands out from what everyone else is doing
- Create content to tell a story for a purpose
- Learn about settings and industry standards for content creation

---

## MSTL Workshop Options (Students will receive 1)

---

### High School to College:

#### Fit and Facts to Becoming a Leader - (Ideal for rising 10th graders)

- Learn how to develop a strong resume
- Learn how to ask for letter of recommendation
- Learn from college and university admissions experts in a panel format
- Learn about IB/AP/Honors courses and dual enrollment options

---

### Navigating Learning, Lessons, and Leadership: The Road to College - (Ideal for rising 11th graders)

- Learn what your interests are and how this translates into college applications
- Learn about college applications from university experts
- Learn about what graduate school is and what it takes to get there

---

### Entrepreneurial Leadership

- Create a pitch deck and tell your story
- Learn about the basic of starting a business
- Gain industry professional connections



# Summer Program Details

---

## Summer Program Costs and Payment

(GUPPY, IS4GT, MST, and MSTL)

---

### Application fee

**All programs require a \$50 non-refundable application fee.**

Please note that this fee must be paid **BEFORE** any information is shared or reviewed on your application.

---

### Tuition

Please refer to acceptance letter for due date(s). Extended day is available for commuter students for an additional cost. Tuition cost breakdown is as follows.

.....

#### GUPPY

**\$350** - includes lunch except July 20-24 program

(\$175 due within 7 days of billing; additional \$175 due with 14 days of billing)

.....

#### IS4GT and MST@MSU

Commuter: **\$750**

(\$375 due within 7 days of billing; additional \$375 due with 14 days of billing)

Residential: **\$1,500**

(\$750 due within 7 days of billing; additional \$750 due within 14 days of billing)

.....

#### MSTL

Commuter: **\$995** - includes lunches

Extended day is available for commuter students for an additional cost.

(\$497 due within 7 days of billing; additional \$498 due with 14 days of billing)

Residential: **\$1,950**

(\$975 due within 7 days of billing; additional \$975 due within 14 days of billing)

---

**Students accepted within 14 days of the program start will be subject to an abbreviated payment deadline.**



---

## Financial aid

Tuition assistance from the GATE office may be available to those with financial need. Fill out the Financial Aid page of the application when you apply.

---

## How to pay

Payments can be made online at **gifted.msu.edu/payment**. Please contact the GATE office for check submission instructions.

---

## Other costs

(also see Summer Program FAQs; spending amounts are suggested there)

- Extended day is available to commuter students for an additional cost.
  - For out of town families for GUPPY, GATE has arranged discounted rates at local hotels. Reservation information will be distributed after the student is accepted into the program. This cost is not covered by tuition and is the responsibility of families.
- 

## Cancellation policy

All programs, or classes within a program, may be subject to a minimum enrollment of students and may be canceled at the discretion of the GATE office. Additionally, the residential portion of the programs may be canceled if there are not enough residential students enrolled.

---

## Refunds and drops

**The application fee of \$50 is non-refundable.**

- All requests for withdrawals for summer programs must be submitted in writing to the Gifted and Talented Education office via e-mail at **gifted@msu.edu**. No fees or tuition will be refunded.
  - A student may only leave the program in case of emergency. In such a case, the student should take all personal belongings with them as they will be considered withdrawn from the program. No refunds will be given.
- 

## Commuter vs. Residential

Residential and Commuter students are required to attend all classes. Students are not allowed to leave during any program unless there is an emergency. Students who are absent at any point during a program

(including early departure for emergencies) will be considered withdrawn from the program from that point forward and no refunds will be issued.

.....

### Comparison of Commuter and Residential Participation in GATE Summer Programs

	Residential (R)	Commuter (C)
Academic classes	Both <b>R</b> and <b>C</b> students participate in the day's academic classes.	
Lunch	Both <b>R</b> and <b>C</b> students are provided with lunch.	
Social activities	Because residential students pay to stay overnight in the residence halls, there are additional social activities planned for them in the evenings and on the weekend.	Commuter students do not participate in evening or weekend social activities.
Program attendance	<b>R</b> students are not allowed to leave for the duration of the program (unless an emergency arises). Students can communicate with their families via phone and e-mail in the evenings.	<b>C</b> students must be dropped off and picked up during designated times. Arriving late, leaving early, or missing days of class is not allowed.

.....

### Availability of Commuter and Residential Options for GATE Summer Programs

	Residential (R) <sup>1</sup>	Commuter (C)
GUPPY	No <sup>2</sup>	Yes
IS4GT	Yes	Yes
MST@MSU	Yes	Yes
MSTL	Yes	Yes

1. Students must be at least 12 years old by the start of the program to stay in the dorms.  
2. For GUPPY, families who live out of the area may stay at a local hotel. A parent must accompany their student.

---

# Summer Program FAQs

## **When and where do I drop off and pick up my child?**

Times, locations, and detailed information about drop-off and pick-up policies will be provided to parents and guardians well in advance of the beginning of the program via email. Alternate drop-off or pick-up times are not allowed. It is important that we make sure that every student is accounted for and safe at all times.

## **Can my child miss a day of class?**

**NO.** It is against university policy for an enrolled student to leave the program early or arrive late for any reason. Courses are also incredibly rigorous, and we do not want any of our students to fall behind or feel left out. Students may only miss class for an emergency that warrants the student leaving for the remainder of the program.

## **Can I visit my child or take my child home on the weekend?**

**NO.** GATE programs are closed programs, meaning that for the duration of the program there are no visits from home or trips home for the weekend.

Programs are full of fun activities, even on the evenings and weekends for residential students! For liability reasons, it is mandatory that students stay on campus for the duration of the program unless an emergency arises that warrants the student leaving for the remainder of the program.

Students will be able to text, e-mail, and call their parents and guardians at designated times, usually during evening free time.

## **Will my child be safe on campus and staying in the dorms?**

Residential staff, also called Lead Supervisors and Resident Advisors (RAs), are trained to keep each student safe. Before the opening of the program, the residential staff receive training on rules, regulations, and safety information related to the students' welfare. RAs are selected because of their commitment to education and ability to interact well with young people.

The residential staff members live in the residence hall on the same floor as students and are on duty 24 hours a day to ensure that every camper is safe. They are responsible for providing a comfortable and friendly atmosphere in the residence hall.

Male and female students will live in separate hallways in the same residence hall.



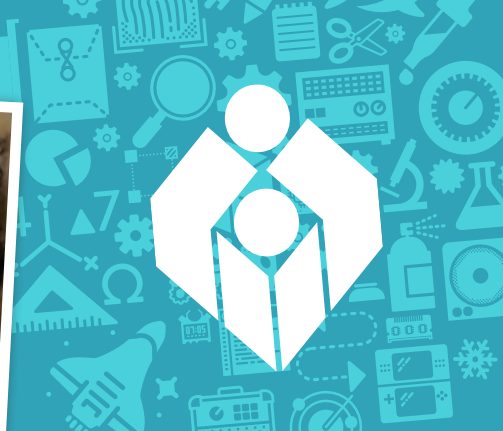
## MSU Non-Discrimination Statement

MSU's Anti-Discrimination Policy prohibits acts of discrimination and harassment against any university community member(s) by inappropriately limiting employment opportunities, access to university residential facilities, or participating in educational, athletic, social, cultural, or other university activities on the basis of age, color, gender, gender identify, disability, height, marital status, national origin, political persuasion, race, religion, sexual orientation, veteran status or weight. Complaints under this policy may be submitted to the Office of Institutional Equity for investigation.

MICHIGAN STATE  
UNIVERSITY







# Ingham Intermediate School District

Ingham Intermediate School District is a regional educational service agency that offers programs and services to 12 public school districts, 9 public school academies, and over 44,000 students, and reaches into seven counties. Our continuum of programs and services includes summer camps to challenge young minds.

---

## Ingham ISD Summer 2020 Programs

**Register beginning March 1, 2020**

---

### Wilson Talent Center Summer Camps

The Wilson Talent Center will be hosting several summer camps in areas such as Engineering, Culinary Arts, New Media and more.

**Cost: TBD**

---

### Kids' College

**July 6 – 17, 2020**

For students who have completed grades 4 or 5.

Kids' College is a two-week learning experience for students who are identified as having high abilities or interest in science and engineering. Students focus on inquiry-based experiences with hands-on and applied learning.

**Cost: \$325**

(partial/full scholarships may be available based on need)

---

## Math Scholars University

**July 6 – 17, 2020**

For students who have completed grades 6 or 7.

Math Scholars University is a two-week program designed to serve students who are identified as having high abilities or interest in mathematics.

This program challenges students to develop a better understanding of mathematics through the use of problem-solving applications, mathematical reasoning and collaboration.

Held on the campus of Michigan State University, Math Scholars University is sponsored by Ingham ISD and partially funded by grants from the W. B. and Candace Thoman Foundation. Math Scholars is open to students who have completed grades 6 or 7 and show mathematical potential.

**Cost: \$325**

(partial/full scholarships may be available based on need)



One mission of the MSU Science Festival is to explore the many ways science, technology, engineering, art and mathematics (the STEAM disciplines) touch our everyday lives and shape our future. A broader public access to natural learning environments and to basic research and its applications is an important goal of the festival.

SCIENCE | TECHNOLOGY | ENGINEERING | ARTS | MATHEMATICS

MICHIGAN STATE UNIVERSITY

# SCIENCE FESTIVAL

APRIL 1-30, 2020



[sciencefestival.msu.edu](http://sciencefestival.msu.edu)





# Spartan Youth Programs

**Camps, Courses, Places to Visit,  
Programs, and Other Activities  
for Kids of All Ages**

(Pre-K through 12th Graders)

## What is SYP?

A website that displays a wide range of **exciting opportunities** for **pre-K through 12<sup>th</sup> graders** to improve their knowledge and skills in specific subject areas. Pre-college programs are an excellent way for students to explore majors or careers while being introduced to the college environment.

---

With **over 200 listings** covering topics in agriculture, art, business, computers, engineering, math, music, science, sports, and writing, **MSU is sure to have a program for every student!**

You can search the SYP website for:

- summer and school year programs
- opportunities to earn college credit
- residential experiences on the MSU campus
- financial assistance
- study abroad possibilities



For more information visit  
**[spartanyouth.msu.edu](http://spartanyouth.msu.edu)**



**MICHIGAN STATE**  
**U N I V E R S I T Y**

Gifted and Talented Education  
University Outreach and Engagement

Kellogg Center  
219 S. Harrison Rd., Rm 8  
East Lansing, MI 48824

For more information on any of our programs, please visit  
**GIFTED.MSU.EDU**