

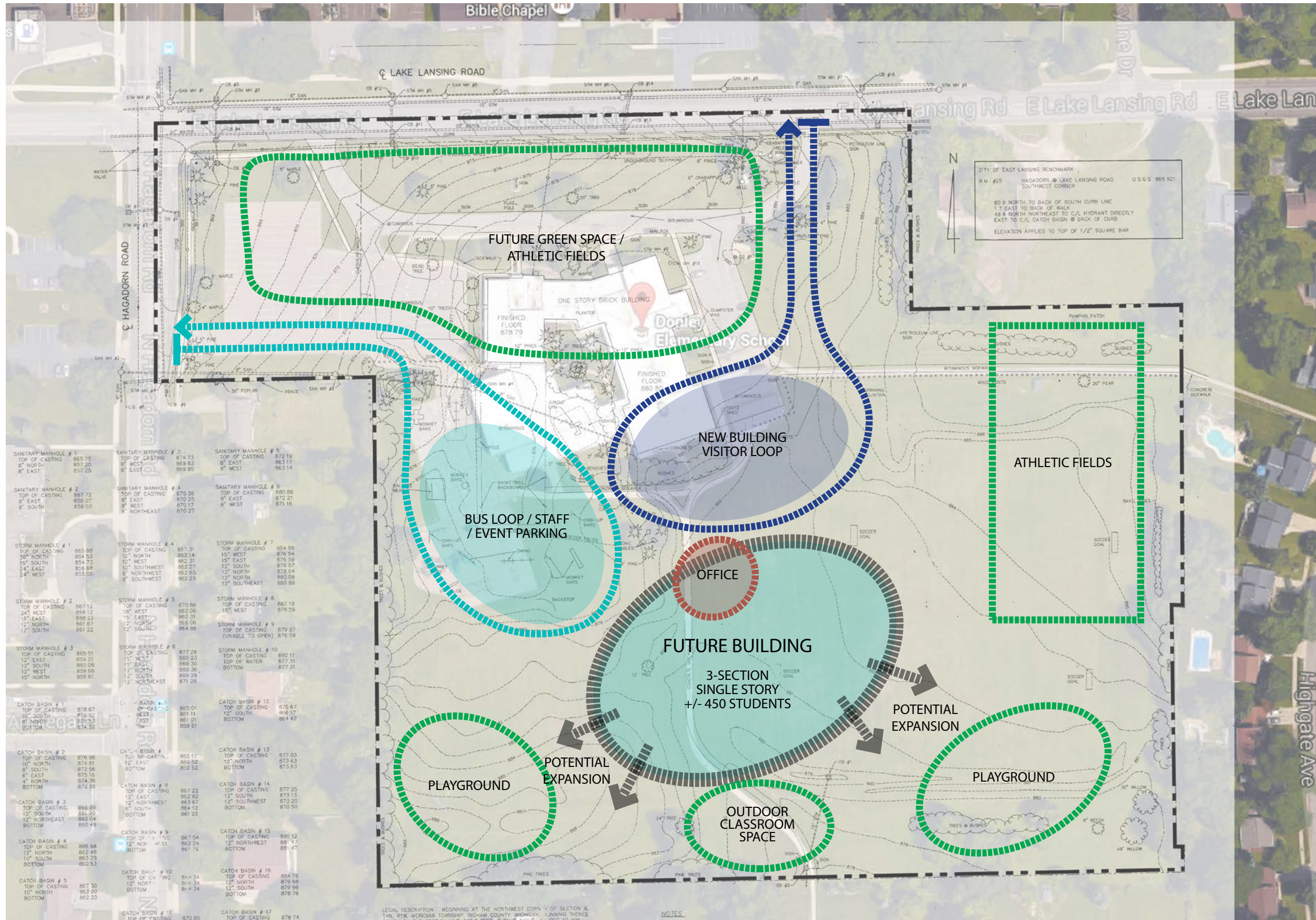


GOALS

- PLAN FOR FUTURE GROWTH
- INCREASE SAFETY BY SEPARATING COMPETING VEHICULAR USES
- RELIEVE CONGESTION AND IMPACT ON ADJACENT ROADWAYS

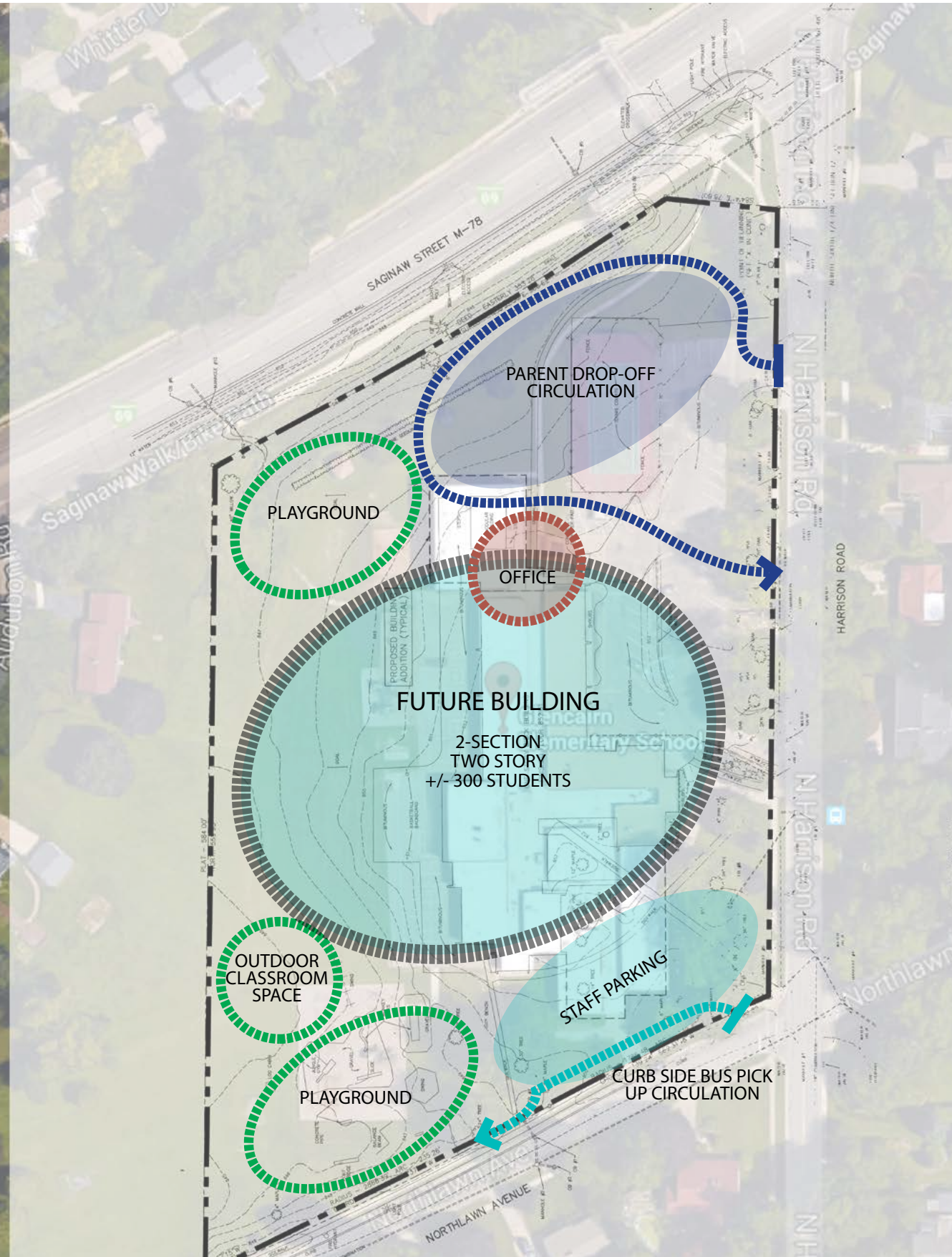
POSSIBLE FUTURE EXPANSION

- CREATE A 'CAMPUS' ATMOSPHERE WITH 2 DESIGNATED ENTRY POINTS
- DEVELOP UNIFIED INTERNAL TRAFFIC FLOW BETWEEN BOTH SCHOOL BUILDINGS
- PROVIDE EXTENDED VISITOR LOOPS AT EACH BUILDING
- ALLOW FOR INTERNAL BUS TRAFFIC BETWEEN SCHOOLS
- RELOCATE OFFICE IN EXISTING BUILDING TO FACE INTERNAL SITE
- ORGANIZE PLAYGROUND ACTIVITIES IN EASILY MONITORED AREAS
- MAINTAIN AS MUCH GREEN SPACE AND SPORTS FIELD AREAS AS POSSIBLE
- ELIMINATE CURB CUT ON LAKE LANSING ROAD



11.17.2016

EAST LANSING PUBLIC SCHOOLS | DONLEY ELEMENTARY SCHOOL



GOALS

- RELIEVE TRAFFIC CONCERNS ON ADJACENT ROADWAYS
- IMPROVE PEDESTRIAN SAFETY
- CENTRALIZE PLAYGROUND EQUIPMENT FOR BETTER VISIBILITY
- IMPROVE / EXPAND PARKING

PRELIMINARY RECOMMENDATION

- PROVIDE SEPARATION BETWEEN BUS TRAFFIC AND PARENT / VISITOR TRAFFIC. IMPROVE SAFETY
- MOVE BUSES TO SOUTH SIDE OF BUILDING - PROVIDE CURBSIDE PICK UP IN LIEU OF DEDICATED BUS LOOP
- PROVIDE VISITOR / STUDENT PICK UP ALONG NORTHEAST
- MAINTAIN OFFICE IN CURRENT LOCATION
- EXPAND STAFF PARKING TO SOUTHWEST TO MAXIMIZE PARKING ADJACENT TO OFFICE FOR VISITOR / PARENTS
 - RELOCATE EXISTING PLAYGROUND EQUIPMENT NORTH, ADJACENT TO OTHER PLAYGROUND EQUIPMENT
- PROVIDE OUTDOOR CLASSROOM SPACE FOR STEM / LARGE GROUP LEARNING



11.17.2016

EAST LANSING PUBLIC SCHOOLS | GLENCAIRN ELEMENTARY SCHOOL

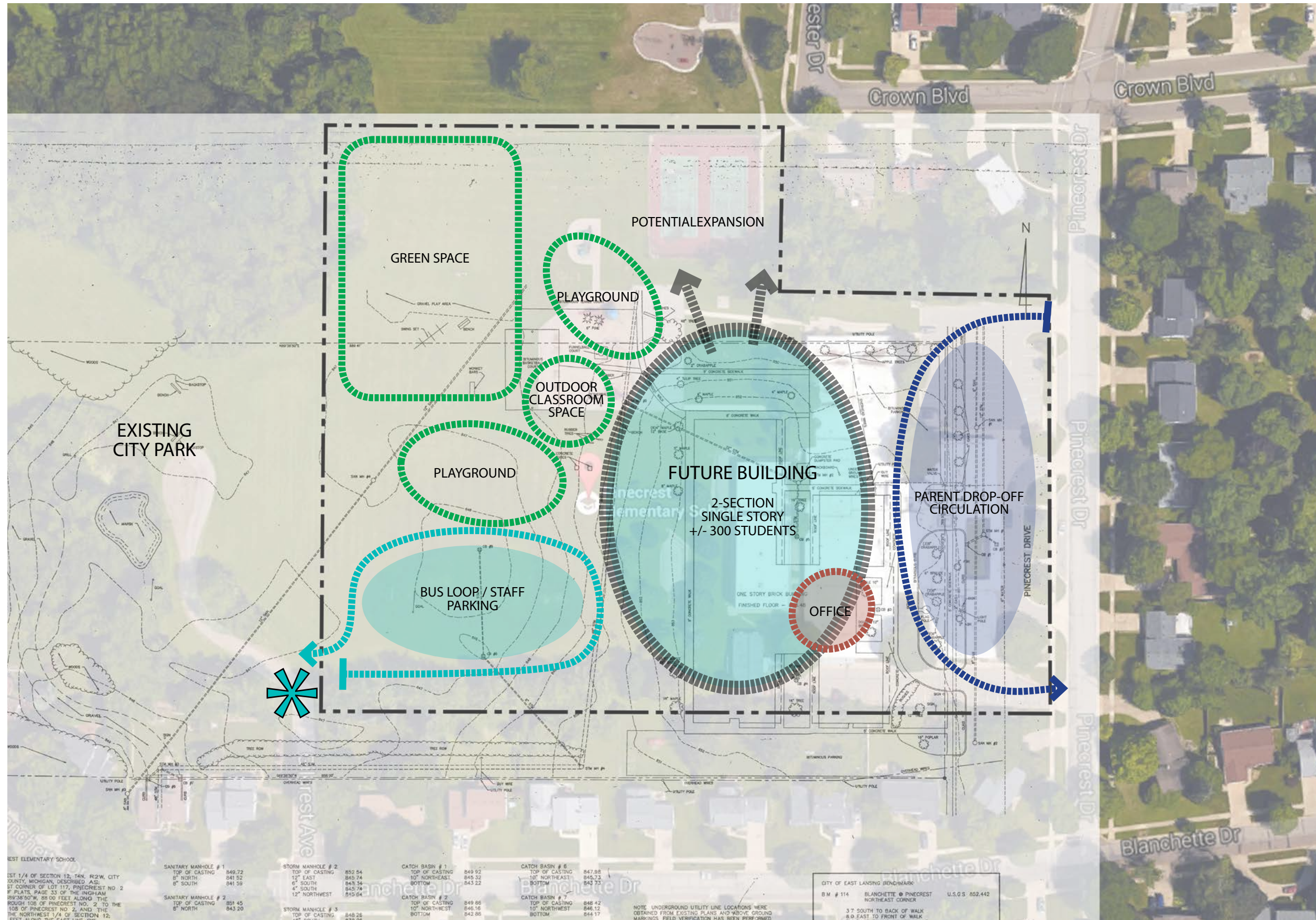


GOALS

- PROVIDE HIGHER LEVEL OF SAFETY DURING HIGH TRAFFIC TIMES
- EXPAND ONSITE CAPACITY
- RELIEVE TRAFFIC CONCERNS ON ADJACENT ROADWAYS

PRELIMINARY RECOMMENDATION

- BUILDING PROXIMITY TO ROAD DOESN'T ALLOW FOR ADEQUATE SPACE FOR PARENT STACKING / PARKING.
- REVIEW BUILDING CONFIGURATION AND IDENTIFY AREAS THAT COULD BE REMOVED AND RECONFIGURED.
- PROVIDE LARGER, ON-SITE PARENT PARKING AND DROP-OFF LOOP
- DEVELOP BUS LOOP THAT IS RELOCATED AWAY FROM FRONT OFFICE LOCATION



11.17.2016

EAST LANSING PUBLIC SCHOOLS | PINECREST ELEMENTARY SCHOOL

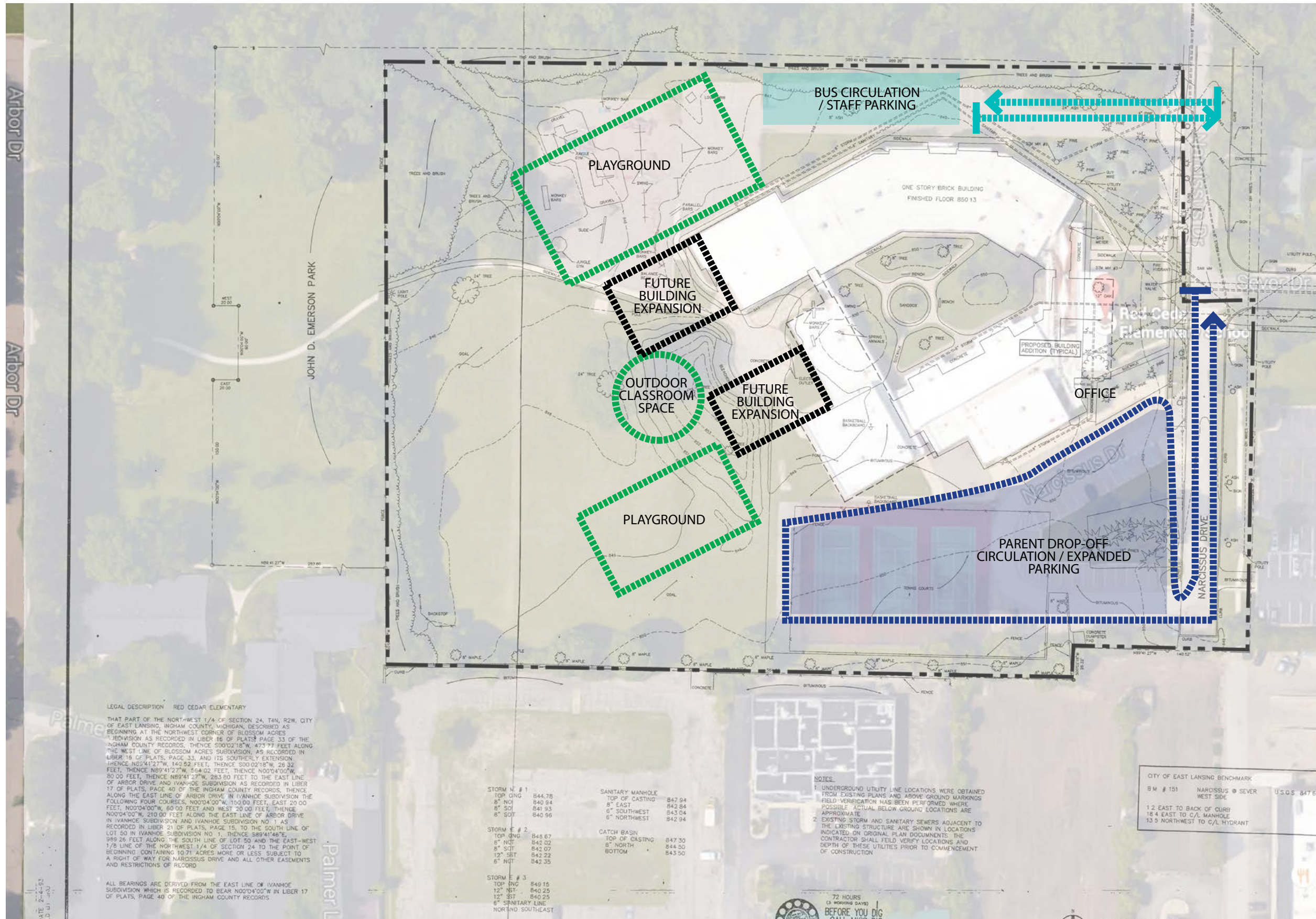


GOALS

- PROVIDE HIGHER LEVEL OF SAFETY DURING HIGH TRAFFIC TIMES
- EXPAND ONSITE CAPACITY
- RELIEVE TRAFFIC CONCERNS ON ADJACENT ROADWAYS

PRELIMINARY RECOMMENDATION

- RELOCATE OFFICE FOR BETTER PROXIMITY TO THE PARENT PARKING AREA
- PROVIDE LARGER, ON-SITE PARENT PARKING AND DROP-OFF LOOP
- DEVELOP BUS LOOP THAT IS LOCATED AWAY FROM FRONT OFFICE LOCATION



11.17.2016

EAST LANSING PUBLIC SCHOOLS | RED CEDAR ELEMENTARY SCHOOL

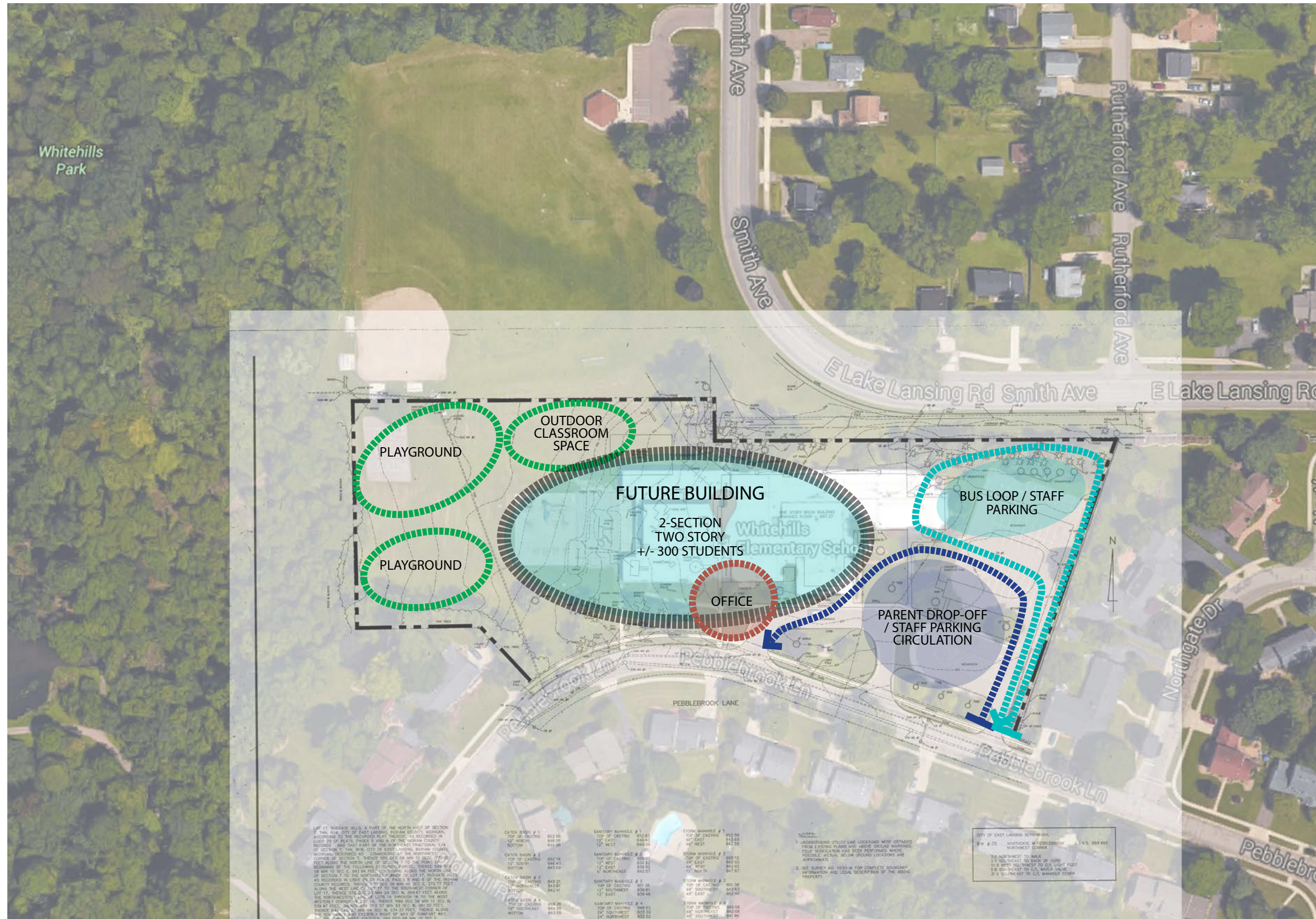


GOALS

- PROVIDE HIGHER LEVEL OF SAFETY DURING HIGH TRAFFIC TIMES
- EXPAND ONSITE CAPACITY
- RELIEVE TRAFFIC CONCERNS ON ADJACENT ROADWAYS
- PROVIDE FOR FUTURE GROWTH

PRELIMINARY RECOMMENDATION

- EXPAND / RENOVATE OFFICE FOR BETTER VISIBILITY TO PARKING LOT
- PROVIDE LARGER, ON-SITE PARENT PARKING AND DROP-OFF LOOP
- MAINTAIN EXISTING BUS LOOP
- RELOCATE AND EXPAND PLAYGROUND SPACE
- REMOVE EAST 6 CLASSROOMS, RELOCATE ON THE BUILDINGS WEST SIDE



11.17.2016

EAST LANSING PUBLIC SCHOOLS | WHITE HILLS ELEMENTARY SCHOOL