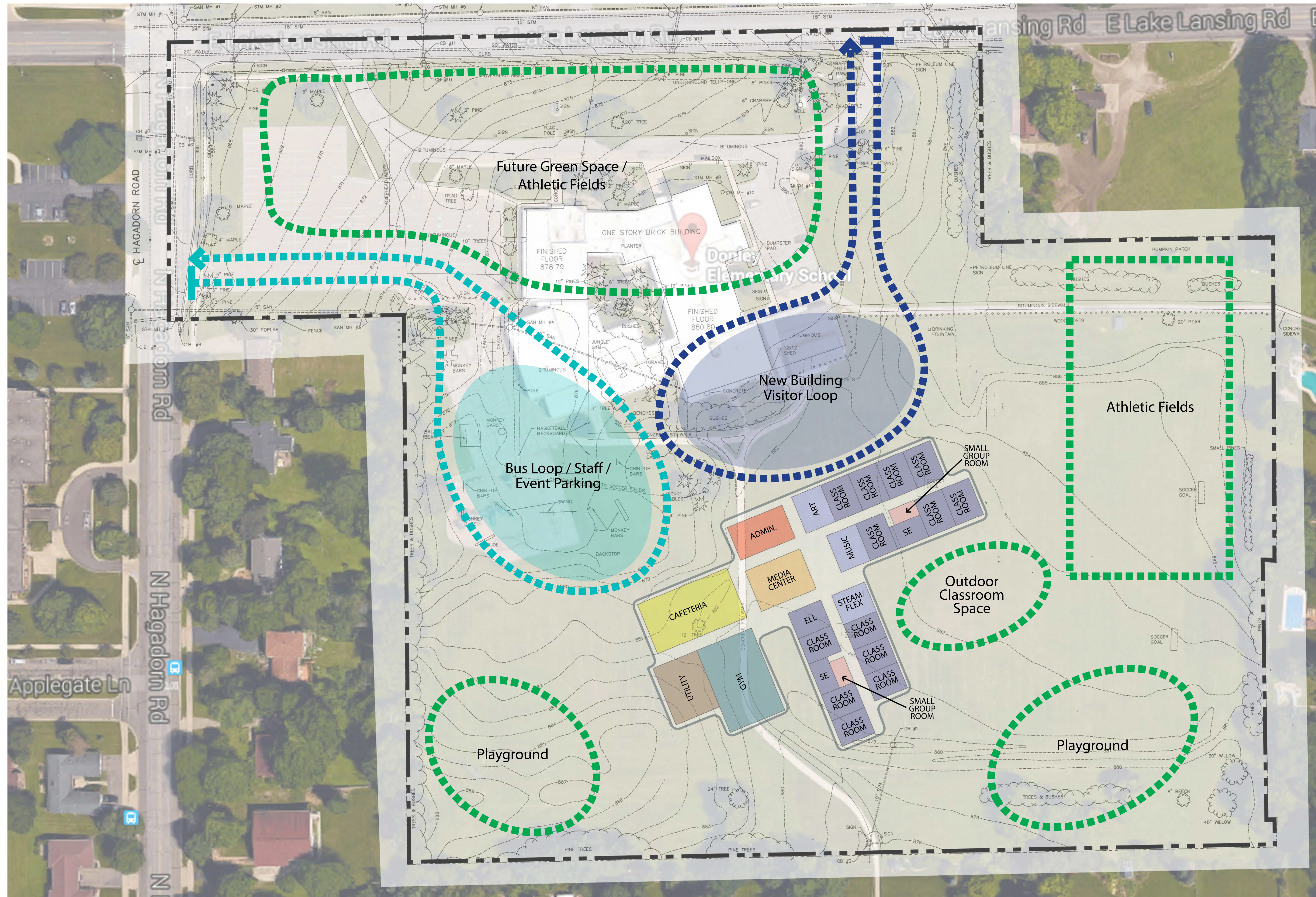




East Lansing Public Schools

Elementary School Building Bond Proposal

This map shows how the site could function after the existing Donley Elementary is removed.



Conceptual site and building diagrams depict potential building and site relationships.
Actual layout and design to be determined by school community and staff.

VOTE DATE
TUESDAY, MAY 2, 2017

DONLEY ELEMENTARY SCHOOL

A new Donley Elementary would be built on its existing site, adjacent to the existing Donley Elementary building.

The existing Donley Elementary building would serve as a temporary location for some of the other elementary schools as those buildings are rebuilt. After construction of all schools, the building will be removed from the site.

THE NEW DONLEY ELEMENTARY WOULD BE DESIGNED FOR:

- Current and future educational programming
- Equitable resources and opportunities for all students
- Efficiency of operation
- Safe pedestrian and vehicular traffic flow
- Enhanced building security

BUILDING FEATURES:

- Safe and secure entry
- 21st Century classrooms and collaborative learning spaces
- Age appropriate classrooms
- Flexible learning environments
- Media center
- Art room
- Music room
- Cafeteria
- Gymnasium
- Outdoor learning space
- Space for STEAM/FLEX
- Age appropriate playgrounds
- Separation of parent and bus traffic
- Expanded parking
- Age appropriate furnishings and technology



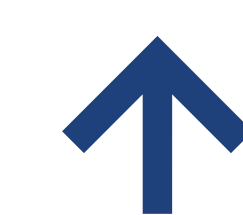
www.elps.us



www.facebook.com/EastLansingPS



twitter.com/ELPSActingSupt



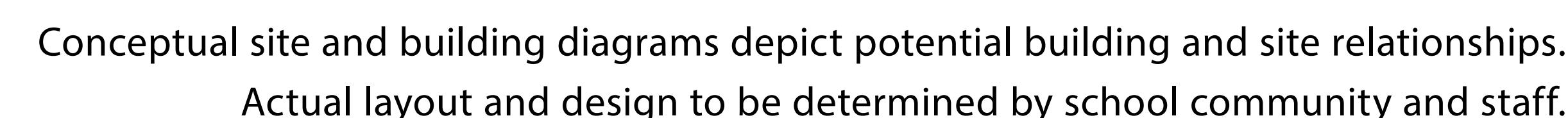
GMB



VOTE DATE

TUESDAY, MAY 2, 2017

- Safe and secure entry
- 21st Century classrooms and collaborative learning spaces
- Age appropriate classrooms
- Flexible learning environments
- Media center
- Art room
- Music room
- Cafeteria
- Gymnasium
- Outdoor learning space
- Space for STEAM/FLEX
- Age appropriate playgrounds
- Separation of parent and bus traffic
- Expanded parking
- Age appropriate furnishings and technology





East Lansing Public Schools

Elementary School Building Bond Proposal

VOTE DATE

TUESDAY, MAY 2, 2017

GLENCAIRN ELEMENTARY SCHOOL

Glencairn Elementary would be rebuilt as a 2-story building on its existing site.

Students and staff would move to another location for one full school year.

THE NEW GLENCAIRN ELEMENTARY WOULD BE DESIGNED FOR:

- Current and future educational programming
- Equitable resources and opportunities for all students
- Efficiency of operation
- Safe pedestrian and vehicular traffic flow
- Enhanced building security

BUILDING FEATURES:

- Safe and secure entry
- 21st Century classrooms and collaborative learning spaces
- Age appropriate classrooms
- Flexible learning environments
- Media center
- Art room
- Music room
- Cafeteria
- Gymnasium
- Outdoor learning space
- Space for STEAM/FLEX
- Age appropriate playgrounds
- Separation of parent and bus traffic
- Expanded parking
- Age appropriate furnishings and technology



Conceptual site and building diagrams depict potential building and site relationships.
Actual layout and design to be determined by school community and staff.



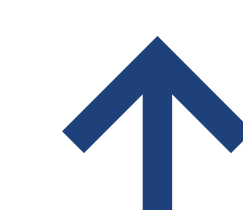
www.elps.us



www.facebook.com/EastLansingPS



twitter.com/ELPSActingSupt



GMB



East Lansing Public Schools

Elementary School Building Bond Proposal

VOTE DATE
TUESDAY, MAY 2, 2017

MARBLE ELEMENTARY SCHOOL

Marble Elementary would be rebuilt on its existing site.

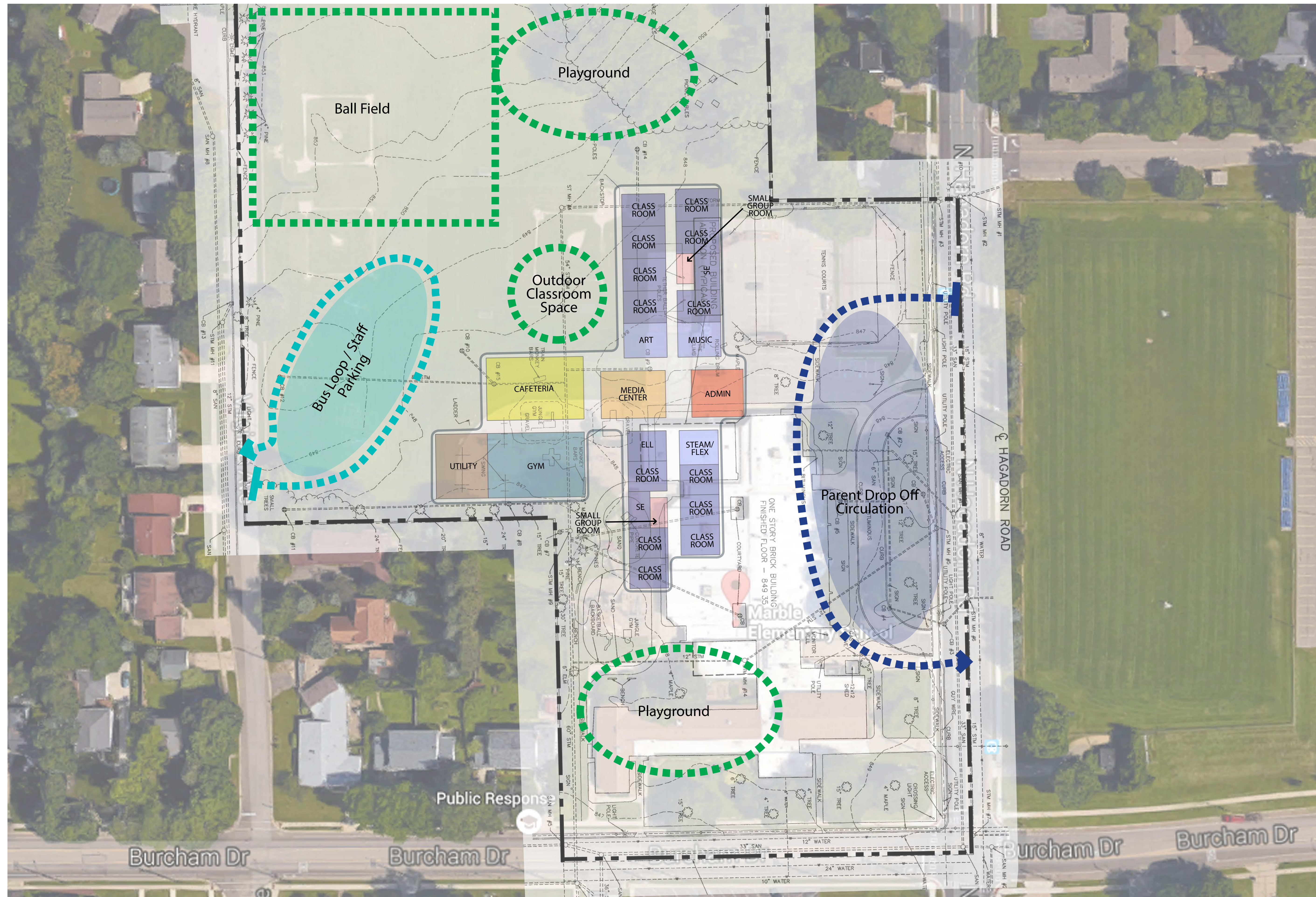
Students and staff would move to another location for one full school year.

THE NEW MARBLE ELEMENTARY WOULD BE DESIGNED FOR:

- Current and future educational programming
- Equitable resources and opportunities for all students
- Efficiency of operation
- Safe pedestrian and vehicular traffic flow
- Enhanced building security

BUILDING FEATURES:

- Safe and secure entry
- 21st Century classrooms and collaborative learning spaces
- Age appropriate classrooms
- Flexible learning environments
- Media center
- Art room
- Music room
- Cafeteria
- Gymnasium
- Outdoor learning space
- Space for STEAM/FLEX
- Age appropriate playgrounds
- Separation of parent and bus traffic
- Expanded parking
- Age appropriate furnishings and technology



Conceptual site and building diagrams depict potential building and site relationships.
Actual layout and design to be determined by school community and staff.



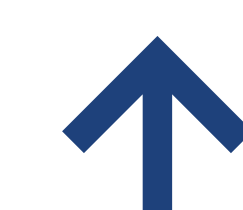
www.elps.us



www.facebook.com/EastLansingPS



twitter.com/ELPSActingSupt



GMB



East Lansing Public Schools

Elementary School Building Bond Proposal

VOTE DATE

TUESDAY, MAY 2, 2017

PINECREST ELEMENTARY SCHOOL

Pinecrest Elementary would be rebuilt on its existing site.

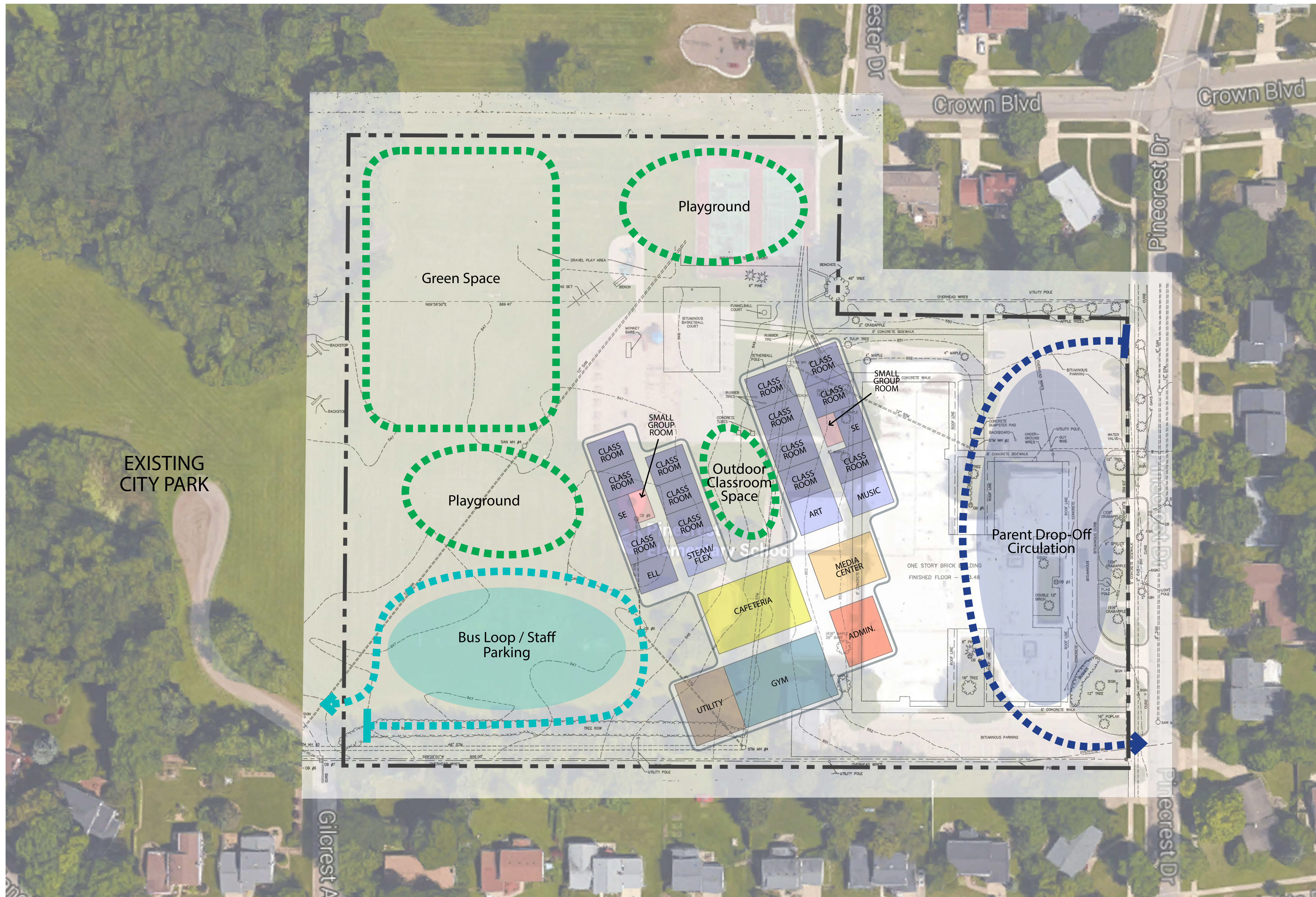
Students and staff would move to another location for one full school year.

THE NEW PINECREST ELEMENTARY WOULD BE DESIGNED FOR:

- Current and future educational programming
- Equitable resources and opportunities for all students
- Efficiency of operation
- Safe pedestrian and vehicular traffic flow
- Enhanced building security

BUILDING FEATURES:

- Safe and secure entry
- 21st Century classrooms and collaborative learning spaces
- Age appropriate classrooms
- Flexible learning environments
- Media center
- Art room
- Music room
- Cafeteria
- Gymnasium
- Outdoor learning space
- Space for STEAM/FLEX
- Age appropriate playgrounds
- Separation of parent and bus traffic
- Expanded parking
- Age appropriate furnishings and technology



Conceptual site and building diagrams depict potential building and site relationships.
Actual layout and design to be determined by school community and staff.



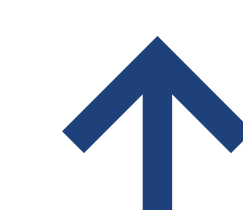
www.elps.us



www.facebook.com/EastLansingPS



twitter.com/ELPSActingSupt



GMB



East Lansing Public Schools

Elementary School Building Bond Proposal

VOTE DATE

TUESDAY, MAY 2, 2017

RED CEDAR ELEMENTARY SCHOOL

Red Cedar Elementary will be remodeled.

The remodeled Red Cedar Elementary would serve as a temporary location for other elementary schools as they are sequentially re-built.

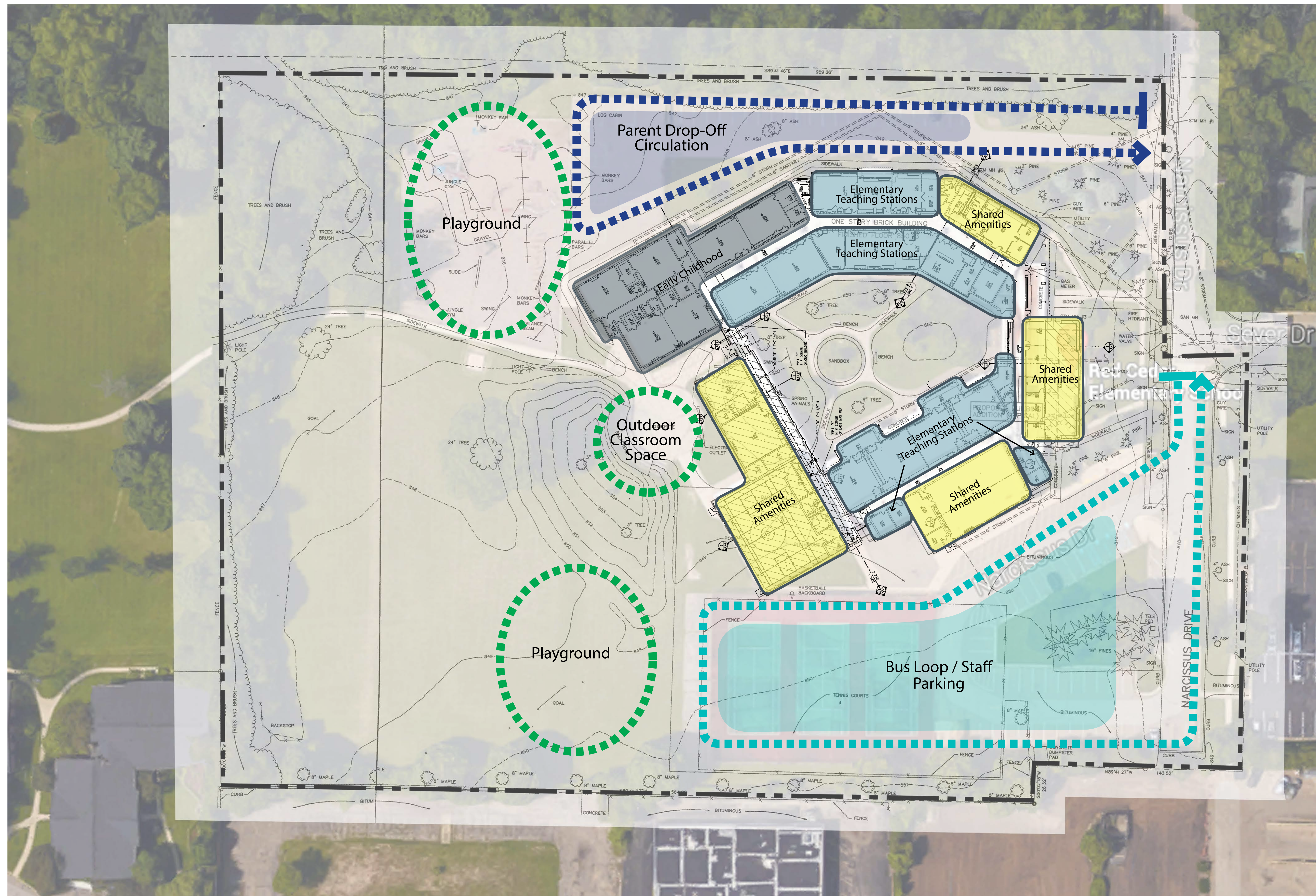
After the completion of all five new elementary schools, Red Cedar would house the district's early childhood education and seven elementary classrooms.

THE REMODELED RED CEDAR ELEMENTARY WOULD BE DESIGNED FOR:

- Current and future educational programming
- Equitable resources and opportunities for all students
- Efficiency of operation
- Safe pedestrian and vehicular traffic flow
- Enhanced building security

BUILDING FEATURES:

- Safe and secure entry
- 21st Century classrooms and collaborative learning spaces
- Age appropriate classrooms
- Flexible learning environments
- Media center
- Art room
- Music room
- Cafeteria
- Gymnasium
- Outdoor learning space
- Space for STEAM/FLEX
- Age appropriate playgrounds
- Separation of parent and bus traffic
- Expanded parking
- Age appropriate furnishings and technology



Conceptual site and building diagrams depict potential building and site relationships.
Actual layout and design to be determined by school community and staff.



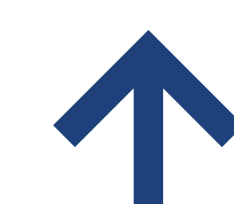
www.elps.us



www.facebook.com/EastLansingPS



twitter.com/ELPSActingSupt



GMB



East Lansing Public Schools

Elementary School Building Bond Proposal

VOTE DATE

TUESDAY, MAY 2, 2017

WHITEHILLS ELEMENTARY SCHOOL

Whitehills Elementary would be rebuilt as a 2-story building on its existing site.

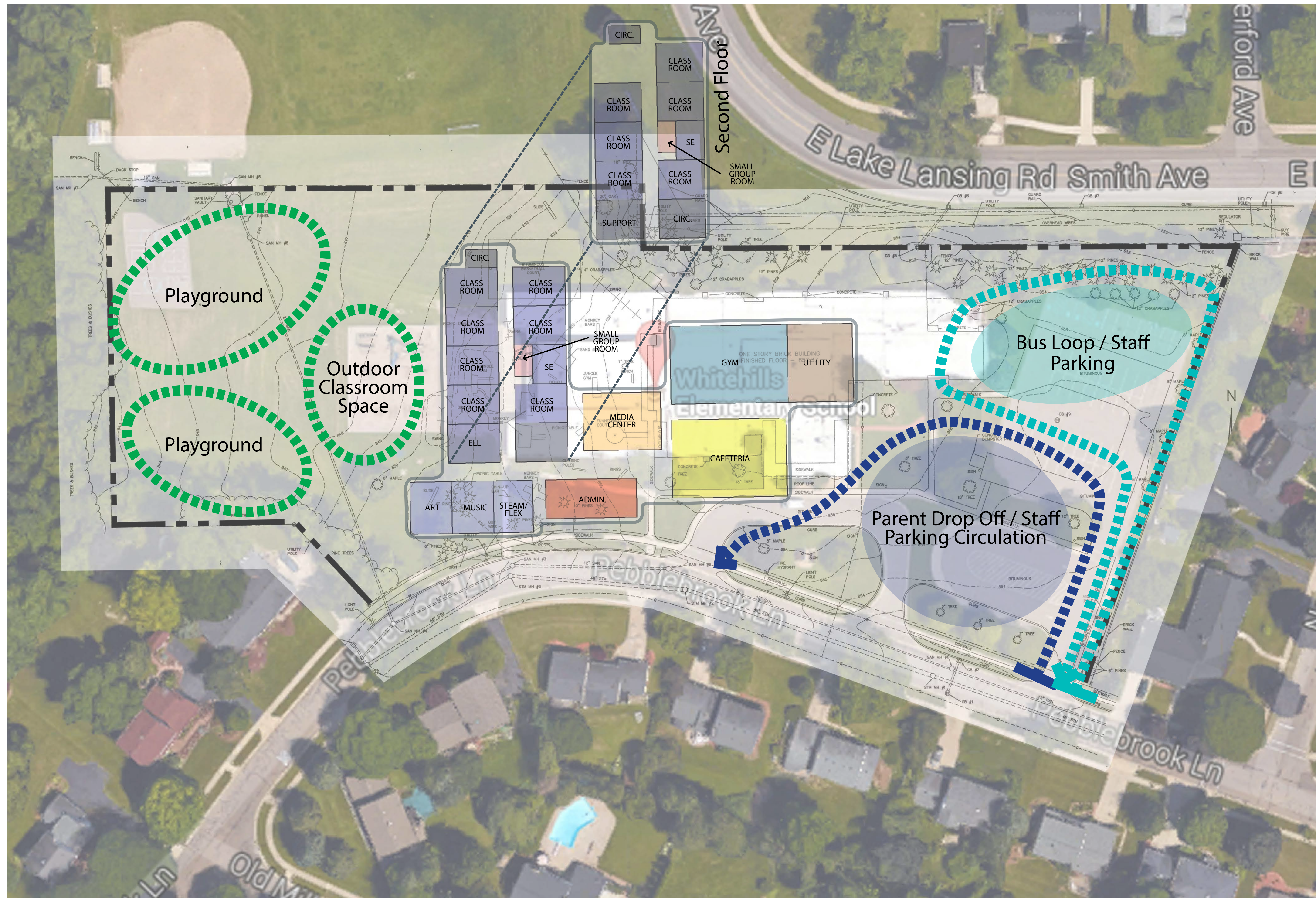
Students and staff would move to another location for one full school year.

THE NEW WHITEHILLS ELEMENTARY WOULD BE DESIGNED FOR:

- Current and future educational programming
- Equitable resources and opportunities for all students
- Efficiency of operation
- Safe pedestrian and vehicular traffic flow
- Enhanced building security

BUILDING FEATURES:

- Safe and secure entry
- 21st Century classrooms and collaborative learning spaces
- Age appropriate classrooms
- Flexible learning environments
- Media center
- Art room
- Music room
- Cafeteria
- Gymnasium
- Outdoor learning space
- Space for STEAM/FLEX
- Age appropriate playgrounds
- Separation of parent and bus traffic
- Expanded parking
- Age appropriate furnishings and technology



Conceptual site and building diagrams depict potential building and site relationships.
Actual layout and design to be determined by school community and staff.



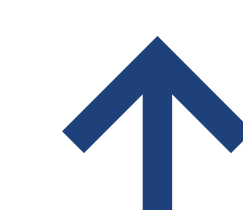
www.elps.us



www.facebook.com/EastLansingPS



twitter.com/ELPSActingSupt



GMB