



# East Lansing Public Schools

## Elementary School Building Bond Proposal

# VOTE DATE

TUESDAY, MAY 2, 2017

### PINECREST ELEMENTARY SCHOOL

Pinecrest Elementary would be rebuilt on its existing site.

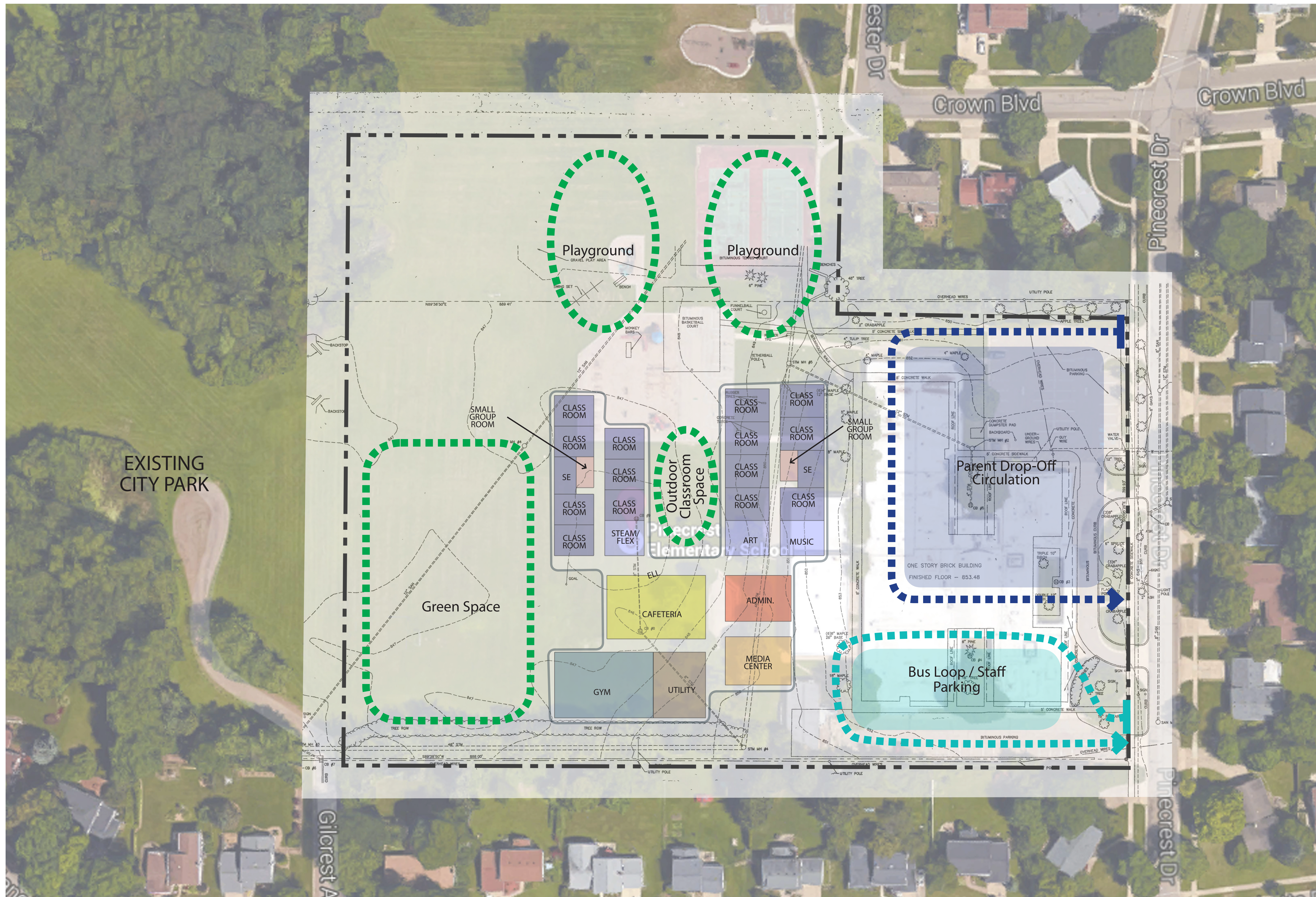
Students and staff would move to another location for one full school year.

#### THE NEW PINECREST ELEMENTARY WOULD BE DESIGNED FOR:

- Current and future educational programming
- Equitable resources and opportunities for all students
- Efficiency of operation
- Safe pedestrian and vehicular traffic flow
- Enhanced building security

#### BUILDING FEATURES:

- Safe and secure entry
- 21st Century classrooms and collaborative learning spaces
- Age appropriate classrooms
- Flexible learning environments
- Media center
- Art room
- Music room
- Cafeteria
- Gymnasium
- Outdoor learning space
- Space for STEAM/FLEX
- Age appropriate playgrounds
- Separation of parent and bus traffic
- Expanded parking
- Age appropriate furnishings and technology



Conceptual site and building diagrams depict potential building and site relationships. Actual layout and design to be determined by school community and staff.



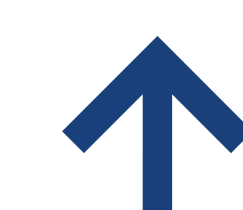
[www.elps.us](http://www.elps.us)



[www.facebook.com/EastLansingPS](https://www.facebook.com/EastLansingPS)



[twitter.com/ELPSActingSupt](https://twitter.com/ELPSActingSupt)



# GMB





# East Lansing Public Schools

## Elementary School Building Bond Proposal

# VOTE DATE

TUESDAY, MAY 2, 2017

### PINECREST ELEMENTARY SCHOOL

Pinecrest Elementary would be rebuilt on its existing site.

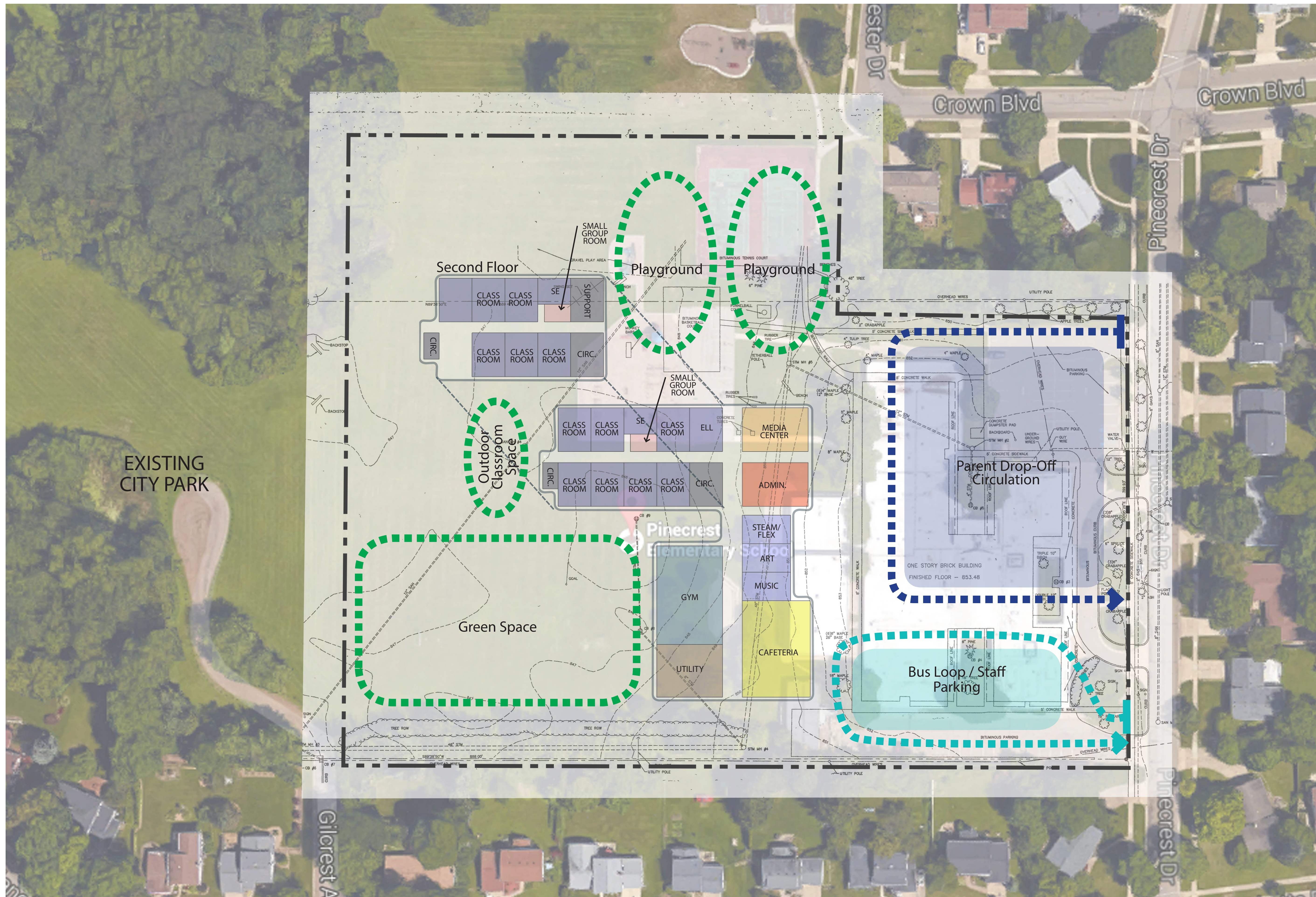
Students and staff would move to another location for one full school year.

#### THE NEW PINECREST ELEMENTARY WOULD BE DESIGNED FOR:

- Current and future educational programming
- Equitable resources and opportunities for all students
- Efficiency of operation
- Safe pedestrian and vehicular traffic flow
- Enhanced building security

#### BUILDING FEATURES:

- Safe and secure entry
- 21st Century classrooms and collaborative learning spaces
- Age appropriate classrooms
- Flexible learning environments
- Media center
- Art room
- Music room
- Cafeteria
- Gymnasium
- Outdoor learning space
- Space for STEAM/FLEX
- Age appropriate playgrounds
- Separation of parent and bus traffic
- Expanded parking
- Age appropriate furnishings and technology



Conceptual site and building diagrams depict potential building and site relationships. Actual layout and design to be determined by school community and staff.



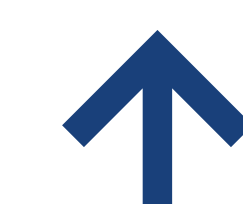
[www.elps.us](http://www.elps.us)



[www.facebook.com/EastLansingPS](https://www.facebook.com/EastLansingPS)



[twitter.com/ELPSActingSupt](https://twitter.com/ELPSActingSupt)



# GMB