



## East Lansing Public Schools District Annual Education Report (AER)

August 12, 2011

Dear Parents and Community Members:

We are pleased to present you with the Annual Education Report (AER) which provides key information on the 2010-2011 educational progress for the East Lansing Public School District and our schools. The AER addresses the complex reporting information required by federal and some requirements of state laws; however, our staff is available to help you understand this information. Please contact the Office of Educational Services for help if you need assistance with interpreting the posted information.

The AER is available for you to review electronically by visiting the following web site: [elps.k12.mi.us](http://elps.k12.mi.us) or you may review a copy in the principal's office at your child's school or at the district Administration Building (841 Timberlane, Suite A).

The report contains the following information:

### **Student Assessment Data– Michigan Educational Assessment Program (MEAP), Michigan Merit Exam (MME), and Michigan's Alternative Assessment Program (MI-Access)**

- Presents achievement data for English language arts and mathematics for grades 3 to 8 (MEAP), for grade 11 (MME) and science for grades 5 and 8 compared to targets for all students as well as subgroups of students
- Provides achievement data for English language arts, mathematics and science for students with significant disabilities (MI-Access) compared to targets for all students with disabilities as well as subgroups of students

- Helps readers understand achievement progress within schools and compare these to district and state achievement

### **Adequate Yearly Progress (AYP) – Detail Data and Status**

Provides information from assessments, graduation and attendance rates and AYP status in relation to four criteria:

- The district must test 95% of students in total and in each required subgroup
- The district must attain achievement goals in English language arts and mathematics or reduce the percentage of students in the non-proficient category of achievement significantly ("safe harbor") annually
- The district must attain achievement goals for each subgroup that has at least 30 students in the group
- The district must meet or exceed the other academic indicators set by the state: graduation rate for high schools and attendance rate for elementary and middle schools

### **Teacher Quality Data**

- Identifies teacher qualifications at district and school levels
- Reports percentage of core academic classes taught by teachers not considered highly qualified to teach such classes

### **NAEP Data (National Assessment of Educational Progress)**

- Provides state results of the national assessment in mathematics and reading every other year in grades 4 and 8
- Cannot be compared with MEAP results for grades 4 and 8 because there are no national standards.

For 2010-2011, East Lansing Public School District made Adequate Yearly Progress (AYP) in English language arts and mathematics. All schools in the district also made AYP as well as met attendance and graduation rates. None of our schools were identified for school improvement, corrective action or restructuring.

We would also like to report on some additional information that may be of interest to parent and community members.

### **Mission Statement**

Nurturing each student

Educating all students

Building world citizens

### **Vision Statement**

East Lansing Public Schools provide an exemplary education for all students through a cohesive, comprehensive curriculum in an inclusive, supportive environment.

### **Status of the 3-5 Year School Improvement Plan**

East Lansing Public schools has developed and submitted for approval a district school improvement plan through the AdvancEd portal. The plan embodies the district's strategic plan consisting of twelve strategic goals and objectives. It identifies core academic goals in English Language Arts/Reading & Writing, Math, Science and Social Studies based on nationally normed achievement test results. Each of these goals identifies specific objectives, strategies and activities delineated to address the achievement gap within core content areas. Each school building submits a school improvement plan that articulates school improvement goals congruent with district data, measurable goals and objectives, professional development priorities and fiscal support through state and federal grants and LEA funding.

### **Core Curriculum Access**

East Lansing Public Schools core curriculum can be accessed on the district website. Additional hard copy publications are available from the office of the Director of Educational Services and at the building level.

### **Description of Implementation**

The implementation of the core curriculum is sustained through a curriculum structure that employs grade level and department chairpersons who meeting monthly. The curriculum council reviews state requirements for core curriculum, plans curriculum development, coherence and articulation, provides for the identification of necessary professional development and budget related requirements to support the implementation of the curriculum. The council members meet with grade level and or department level colleagues monthly and with administration to implement and monitor the effectiveness of curriculum development, implementation and impact on student performance.

## **Variance from State Model**

The district has no variances related to the State's model.

## **Process for Assigning Pupils to the School District**

K-6 students are assigned to schools based on where they reside in our district. Each K-4 school and both 5/6 schools have specific boundaries within our district.

Parents are allowed the opportunity to complete a permeable boundary request that would allow their child to attend a school within the school district other than their neighborhood school. Requests require the approval of the sending and receiving school Principals as well as the Superintendent and is based on space availability at the school/grade.

East Lansing Public Schools also participates in the state's Schools of Choice process annually. Available openings are advertised, applications are accepted during a specific application period and students are accepted on a lottery system to fill the advertised slots.

## **Core Beliefs**

### **We Believe:**

- Students' needs and interests are core to all decisions and actions.
- We must inspire a passion for life long learning.
- High expectations in teaching and learning result in personal and academic excellence.
- Diversity is affirmed by integrating the uniqueness of every child in to our learning community.
- In providing equitable access to opportunities and resources for students.
- In engaging the entire community to create trusting, safe, welcoming learning environment.
- In building world citizens.

**Iowa Test Results:**

East Lansing Public Schools administered the Iowa Test of Basic Skills to 6<sup>th</sup> grade students for the 2010-2011 school year. This is a standardized achievement test widely used throughout the nation. School district, building and individual student scores are compared against the national norm of 50<sup>th</sup> percentile. Comparative results are provided below.

| 2011 IOWA Results |               |                |                   |            |                |         |
|-------------------|---------------|----------------|-------------------|------------|----------------|---------|
| Grade 6           | Reading Total | Language Total | Mathematics Total | CORE TOTAL | Social Studies | Science |
| EAST LANSING P.S. | 61            | 58             | 61                | 59         | 59             | 64      |
| GLENCAIRN         | 62            | 58             | 57                | 58         | 62             | 65      |
| WHITEHILLS        | 60            | 59             | 65                | 60         | 58             | 63      |

## AIMSweb Universal Screening

During the 2010-2011 school year, East Lansing Public Schools implemented universal screening for all students K-8<sup>th</sup> grade. This screening was completed for all students during the fall, winter, and spring assessment windows using reading curriculum based measures. Screening for all students during the 2010-2011 school year will be completed three times, fall, winter and spring.

Universal screening helps educators to establish an academic and behavioral baseline, and helps identify learners who need additional support. Instructional decisions can then be made based on the screening results in conjunction with classroom teacher information to improve learner outcomes. Universal screening is a key component to an early prevention model known as Response to Intervention, or RtI. This model is focused on helping classroom teachers to differentiate their instruction and to provide early interventions so that students can be assisted before they fall too far behind.

AIMSweb is the universal screening tool that is being used to screen students for possible academic difficulty. AIMSweb is a benchmark and progress monitoring system. AIMSweb measures are quick to administer and take between 1-10 minutes (most 1-4 minutes). Depending on the measure, testing is administered individually or in groups.

Students were assessed in the following areas in the spring of 2011:

|                      | <b><i>Reading</i></b>  | <b><i>Math</i></b>  |
|----------------------|--|---|
| <b>Kindergarten:</b> | Letter Naming Fluency (LNF)<br>Phoneme Segmentation Fluency (PSF)<br>Nonsense Word Fluency (NWF) | Oral Counting Fluency (OCM)<br>Number Identification Fluency (NIM)<br>Quantity Discrimination Fluency (QDM) |

|   |   |  |
|---|---|--|
|   |   | Missing Number Fluency (MNM)   |
| <b>1<sup>st</sup> Grade:</b>                  | Nonsense Word Fluency (NWF)<br>Oral Reading Fluency (R-CBM)             | Quantity Discrimination Fluency (QDM)<br>Missing Number Fluency (MNM)<br>Math Computation Fluency (M-COMP) |
| <b>2<sup>nd</sup> Grade:</b>                  | Oral Reading Fluency (R-CBM)  | Math Computation Fluency (M-COMP)  |
| <b>3<sup>rd</sup> Grade:</b>                  | Oral Reading Fluency (R-CBM)<br>MAZE (Vocabulary/Reading Comprehension) | Math Computation Fluency (M-COMP)<br>Math Concepts and Applications (M-CAP)                                |
| <b>4<sup>th</sup> Grade</b>                   | Oral Reading Fluency (R-CBM)<br>MAZE (Vocabulary/Reading Comprehension) | Math Computation Fluency (M-COMP)<br>Math Concepts and Applications (M-CAP)                                |
| <b>5<sup>th</sup> – 8<sup>th</sup> Grade:</b> | MAZE (Vocabulary/Reading Comprehension)                                 | Math Computation Fluency (M-COMP)<br>Math Concepts and Applications (M-CAP)                                |

Once the measures are administered and scored, student scores are entered into the AIMSweb database. The database then ranks students from highest to lowest based on their score on a single measure. Students who fall in the 10<sup>th</sup> %ile or below, would fall in the red zone and would be targeted for intervention. Students who fall in the 11<sup>th</sup> -25<sup>th</sup> %ile would fall in the yellow zone and would be targeted for possible intervention. Students who score above the 26 %ile would fall in the green zone and would not be targeted for further intervention. Student scores are normed referenced and compared to students of their grade level both nationally and to other students within the district. Although screening measures will inform programming decisions, no instructional placement decisions will be made based only on screener data. All instructional decisions will triangulate screener data with teacher observation input, daily work sample data, individually selected teacher assessment data, and other assessment data to make the best programming decisions for students. These measures are used to assess basic reading and math skills three times per year (fall, winter, and spring), allowing educators to assess the growth of those basic skills within the school year, and to adjust instruction if students are not meeting basic skill growth targets.

Following is the 2010-2011 district data:

## East Lansing Public Schools District Reports

2010-2011 Common Assessment Data – Criteria for Low Risk = 26<sup>th</sup> %ile score, Some risk = 11<sup>th</sup> -25<sup>th</sup> %ile, 10<sup>th</sup> %ile or below compared to national norms.

### Kindergarten – Nonsense Word Fluency (NWF)

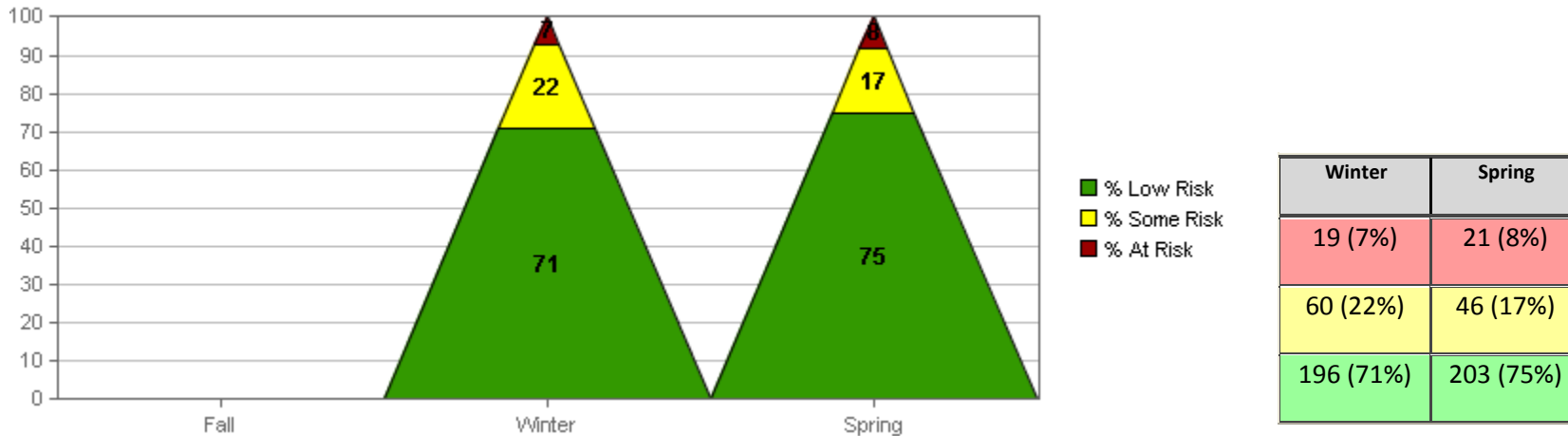
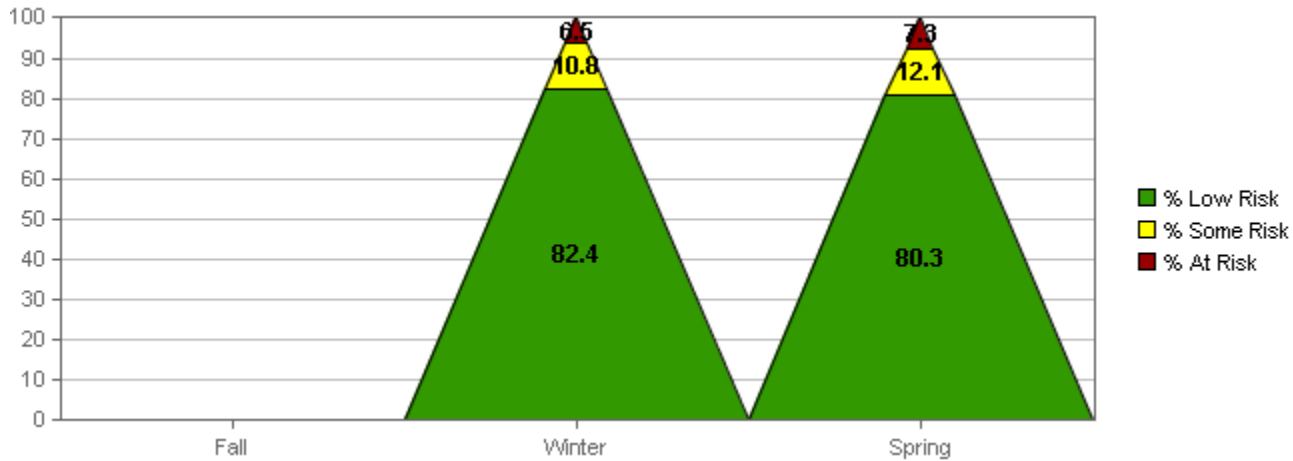


Table numbers list number of students followed by percentiles of students in each area in parenthesis.



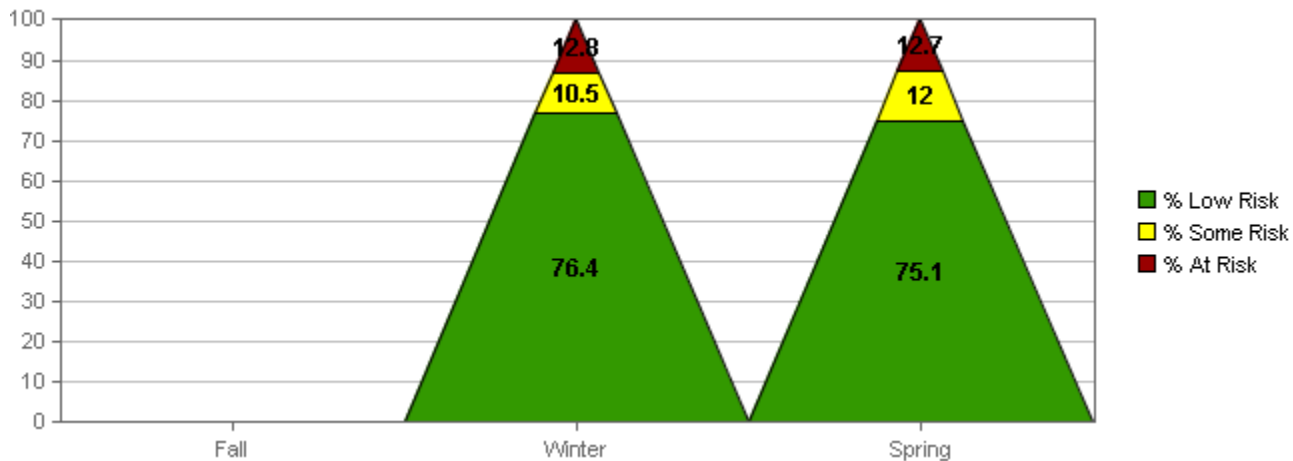
**Kindergarten – Missing Number Fluency (MNM)**



|             | Winter      | Spring      |
|-------------|-------------|-------------|
| % Low Risk  | 226 (82.4%) | 218 (80.3%) |
| % Some Risk | 30 (10.8%)  | 33 (12.1%)  |
| % At Risk   | 18 (6.5%)   | 20 (7.3%)   |

Table numbers list number of students followed by percentiles of students in each area in parenthesis.

**1<sup>st</sup> Grade – Oral Reading Fluency – Reading CBM (R-CBM)**



|             | Winter      | Spring      |
|-------------|-------------|-------------|
| % Low Risk  | 202 (76.4%) | 200 (75.1%) |
| % Some Risk | 28 (10.5%)  | 32 (12.0%)  |
| % At Risk   | 34 (12.8%)  | 34 (12.7%)  |

Table numbers list number of students followed by percentiles of students in each area in parenthesis.

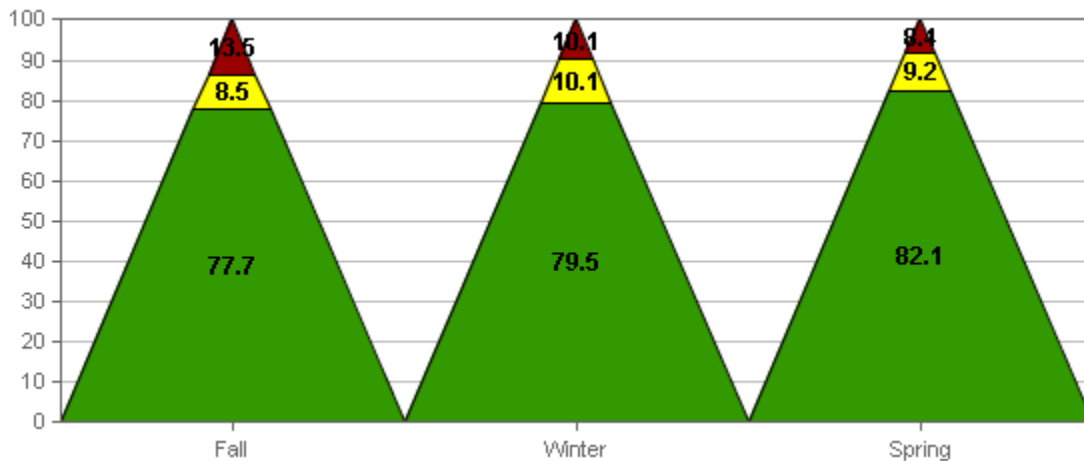
### 1<sup>st</sup> Grade- Math Computation Fluency (M-COMP)

The table below is a distribution of scores within East Lansing Public Schools. No nationally normed comparison was possible because national norms for this measure will be released on the fall of 2011.

|  | Description        | Target Range | Number Of Students | Percent Of Students |
|--|--------------------|--------------|--------------------|---------------------|
|  | Well Below Average | <= 19.9      | 26                 | 9.8%                |
|  | Below Average      | 20.0 - 28.9  | 38                 | 14.3%               |
|  | Average            | 29.0 - 43.9  | 133                | 50.2%               |
|  | Above Average      | 44.0 - 46.9  | 41                 | 15.5%               |
|  | Well Above Average | 47.0+        | 27                 | 10.2%               |

Table numbers list number of students followed by percentiles of students in each area in parenthesis.

### 2nd Grade – Oral Reading Fluency – Reading CBM (R-CBM)



■ % Low Risk  
■ % Some Risk  
■ % At Risk

|  | Fall        | Winter      | Spring      |
|--|-------------|-------------|-------------|
|  | 33 (13.5%)  | 25 (10.1%)  | 22 (8.4%)   |
|  | 21 (8.5%)   | 25 (10.1%)  | 24 (9.2%)   |
|  | 189 (77.7%) | 195 (79.5%) | 213 (82.1%) |

Table numbers list number of students followed by percentiles of students in each area in parenthesis.

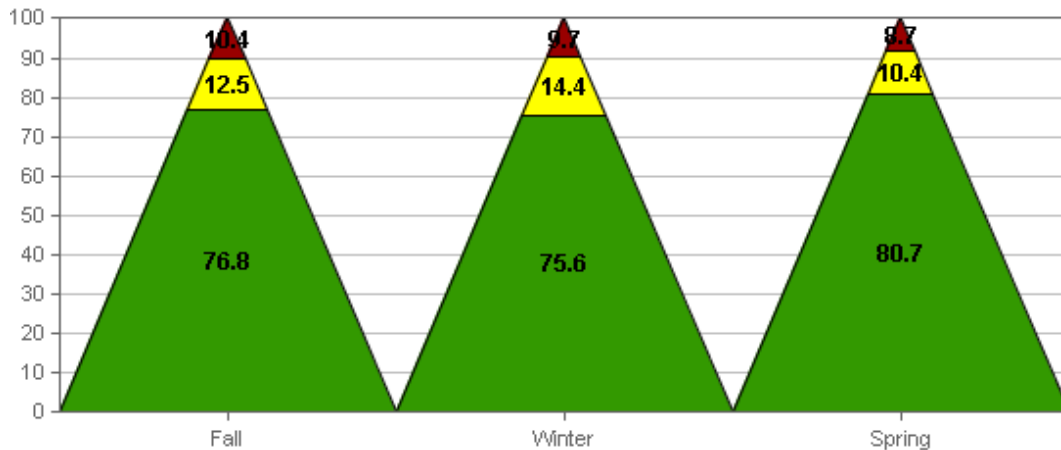
## 2nd Grade- Math Computation Fluency (M-COMP)

The table below is a distribution of scores within East Lansing Public Schools. No nationally normed comparison was possible because national norms for this measure will be released on the fall of 2011.

|  | Description        | Target Range | Number Of Students | Percent Of Students |
|--|--------------------|--------------|--------------------|---------------------|
|  | Well Below Average | <= 27.9      | 24                 | 9.2%                |
|  | Below Average      | 28.0 - 36.9  | 39                 | 15.0%               |
|  | Average            | 37.0 - 46.9  | 116                | 44.6%               |
|  | Above Average      | 47.0 - 49.9  | 46                 | 17.7%               |
|  | Well Above Average | 50.0+        | 35                 | 13.5%               |

Table numbers list number of students followed by percentiles of students in each area in parenthesis.

## 3rd Grade – Oral Reading Fluency – Reading CBM (R-CBM)



■ % Low Risk  
■ % Some Risk  
■ % At Risk

|  | Fall        | Winter      | Spring      |
|--|-------------|-------------|-------------|
|  | 25 (10.4%)  | 23 (9.7%)   | 21 (8.7%)   |
|  | 30 (12.5%)  | 34 (14.4%)  | 25 (10.4%)  |
|  | 183 (76.8%) | 178 (75.6%) | 193 (80.7%) |

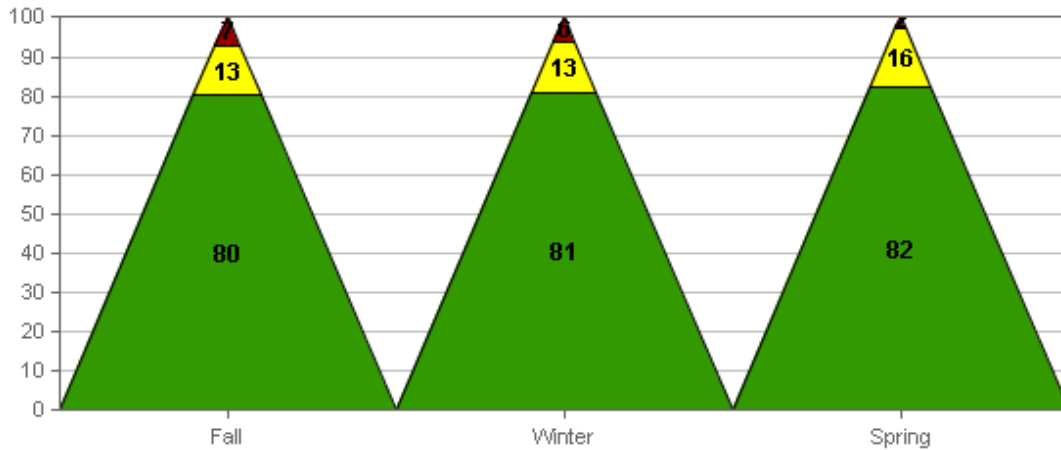
Table numbers list number of students followed by percentiles of students in each area in parenthesis.

### 3rd Grade- Math Computation Fluency (M-COMP)

The table below is a distribution of scores within East Lansing Public Schools. No nationally normed comparison was possible because national norms for this measure will be released on the fall of 2011.

|  | Description        | Target Range | Number Of Students | Percent Of Students |
|--|--------------------|--------------|--------------------|---------------------|
|  | Well Below Average | <= 6.9       | 18                 | 7.6%                |
|  | Below Average      | 7.0 - 12.9   | 41                 | 17.3%               |
|  | Average            | 13.0 - 33.9  | 118                | 49.8%               |
|  | Above Average      | 34.0 - 47.9  | 34                 | 14.3%               |
|  | Well Above Average | 48.0+        | 26                 | 11.0%               |

### 4th Grade – Oral Reading Fluency – Reading CBM (R-CBM)



■ % Low Risk  
■ % Some Risk  
■ % At Risk

|  | Fall      | Winter    | Spring    |
|--|-----------|-----------|-----------|
|  | 15 (7%)   | 13 (6%)   | 5 (2%)    |
|  | 29 (13%)  | 29 (13%)  | 34 (16%)  |
|  | 174 (80%) | 175 (81%) | 178 (82%) |

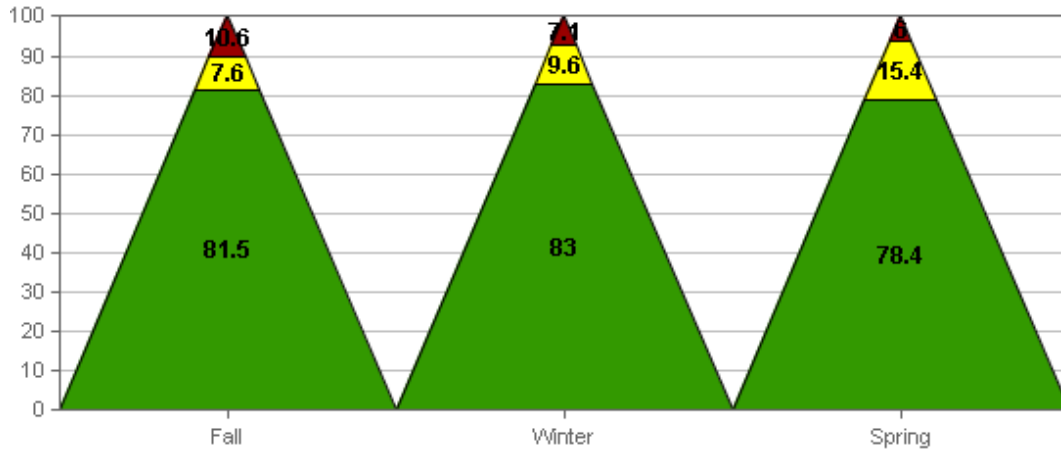
Table numbers list number of students followed by percentiles of students in each area in parenthesis.

### 4th Grade- Math Computation Fluency (M-COMP)

The table below is a distribution of scores within East Lansing Public Schools. No nationally normed comparison was possible because national norms for this measure will be released on the fall of 2011.

|  | Description        | Target Range | Number Of Students | Percent Of Students |
|--|--------------------|--------------|--------------------|---------------------|
|  | Well Below Average | <= 12.9      | 22                 | 10.0%               |
|  | Below Average      | 13.0 - 18.9  | 33                 | 15.1%               |
|  | Average            | 19.0 - 34.9  | 108                | 49.3%               |
|  | Above Average      | 35.0 - 48.9  | 32                 | 14.6%               |
|  | Well Above Average | 49.0+        | 24                 | 11.0%               |

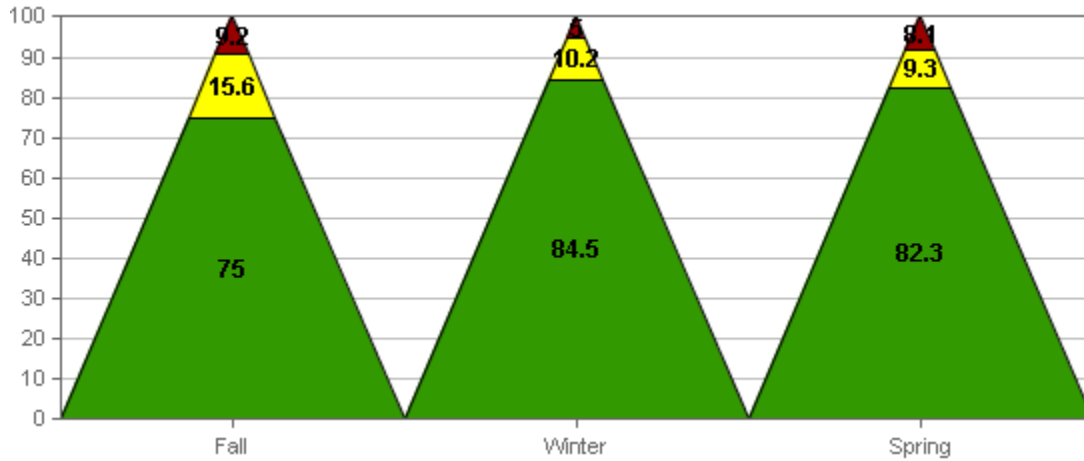
### 5<sup>th</sup> Grade – MAZE



|             | Fall        | Winter    | Spring      |
|-------------|-------------|-----------|-------------|
| % At Risk   | 25 (10.6%)  | 17 (7.1%) | 14 (6.0%)   |
| % Some Risk | 18 (7.6%)   | 23 (9.6%) | 36 (15.4%)  |
| % Low Risk  | 191 (81.5%) | 196 (83%) | 183 (78.4%) |

Table numbers list number of students followed by percentiles of students in each area in parenthesis.

### 5th Grade- Math Concepts and Applications (M-CAP)

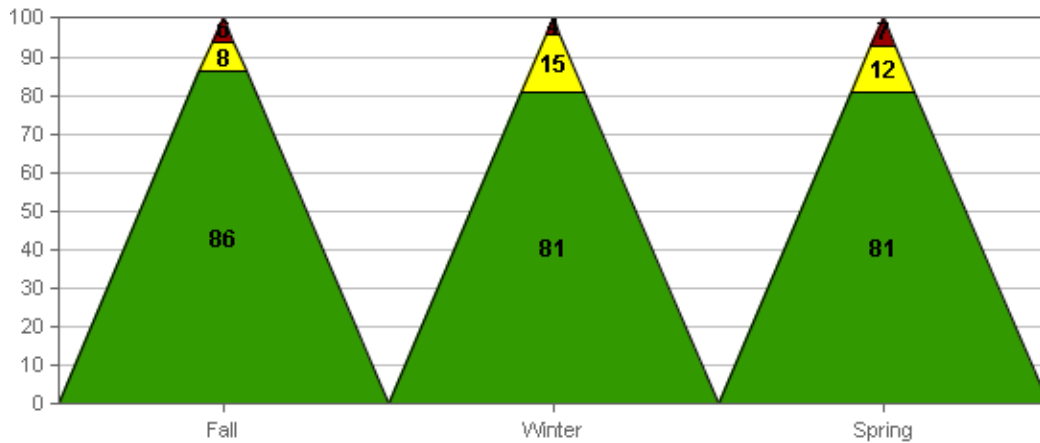


■ % Low Risk  
■ % Some Risk  
■ % Deficient

|   | Fall        | Winter      | Spring      |
|---|-------------|-------------|-------------|
| % | 22 (9.2%)   | 12 (5%)     | 19 (8.1%)   |
| % | 37 (15.6%)  | 24 (10.2%)  | 22 (9.3%)   |
| % | 177 (75.0%) | 198 (84.5%) | 192 (82.3%) |

Table numbers list number of students followed by percentiles of students in each area in parenthesis.

### 6th Grade – MAZE

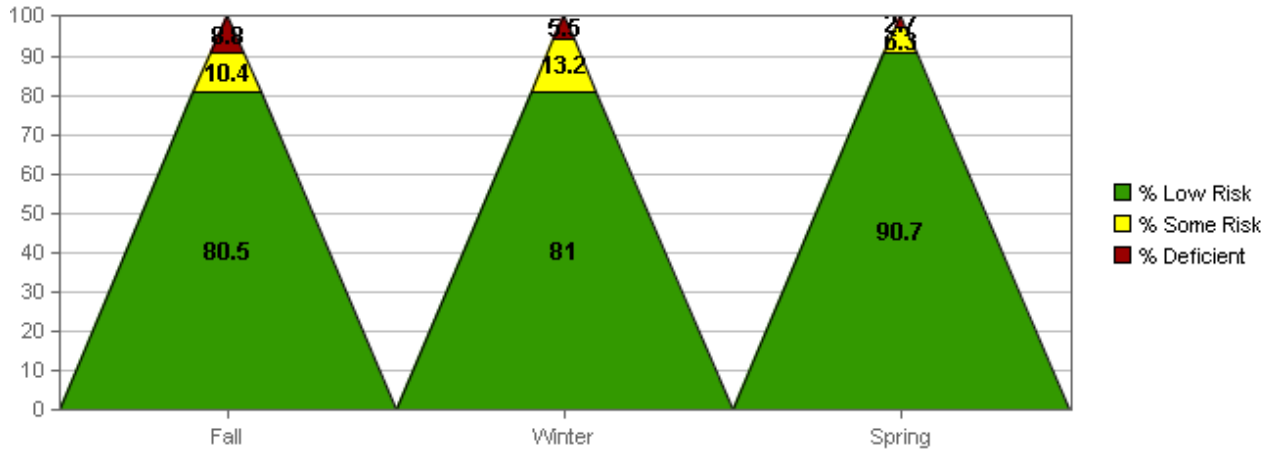


■ % Low Risk  
■ % Some Risk  
■ % At Risk

|   | Fall      | Winter    | Spring    |
|---|-----------|-----------|-----------|
| % | 14 (6%)   | 9 (4%)    | 17 (7%)   |
| % | 21 (8%)   | 38 (15%)  | 30 (12%)  |
| % | 214 (86%) | 201 (81%) | 204 (81%) |

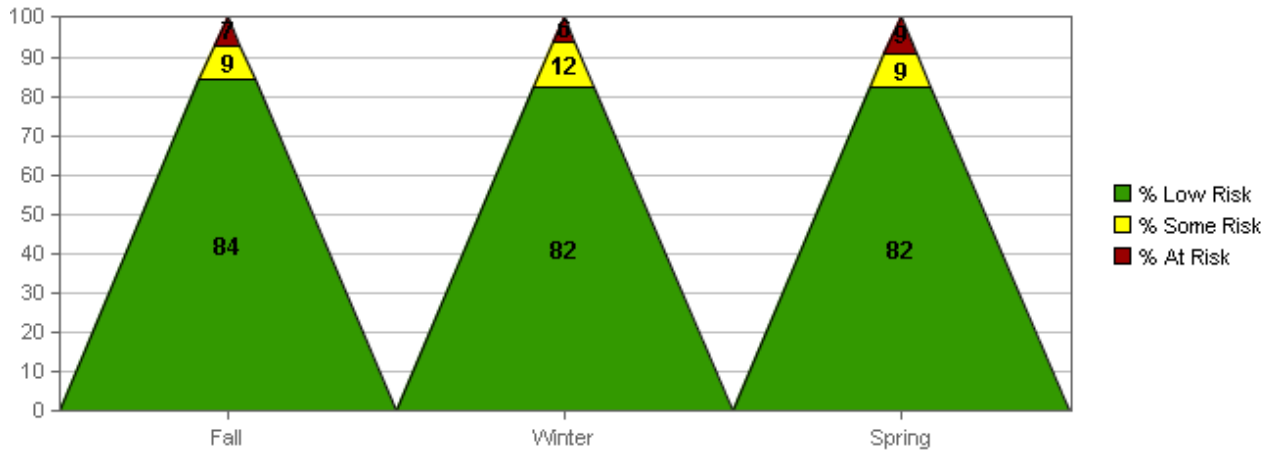
Table numbers list number of students followed by percentiles of students in each area in parenthesis.

### 6th Grade- Math Concepts and Applications (M-CAP)



| Fall        | Winter     | Spring      |
|-------------|------------|-------------|
| 22 (8.8%)   | 14 (5.5%)  | 7 (2.7%)    |
| 26 (10.4%)  | 33 (13.2%) | 16 (6.3%)   |
| 199 (80.5%) | 202 (81%)  | 228 (90.7%) |

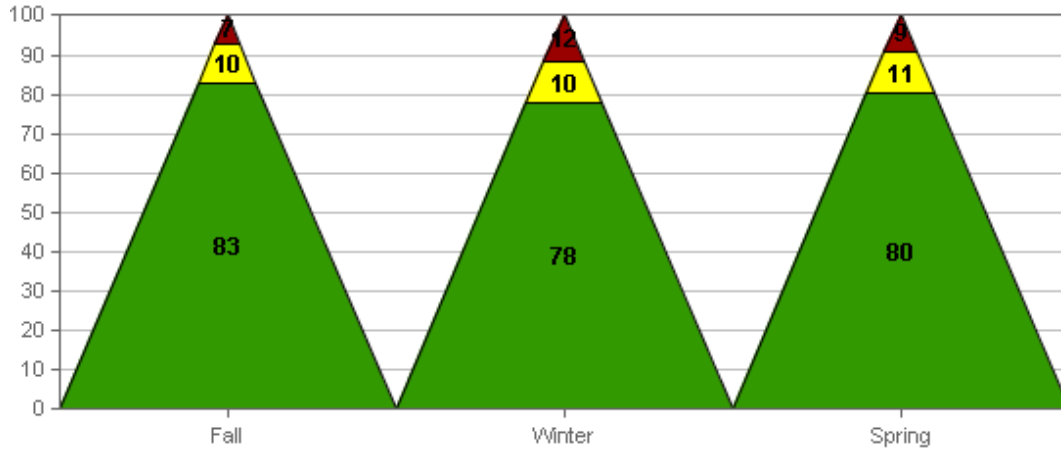
### 7th Grade – MAZE



| Fall      | Winter    | Spring    |
|-----------|-----------|-----------|
| 16 (7%)   | 15 (6%)   | 23 (9%)   |
| 23 (9%)   | 30 (12%)  | 23 (9%)   |
| 209 (84%) | 207 (82%) | 202 (82%) |

Table numbers list number of students followed by percentiles of students in each area in parenthesis.

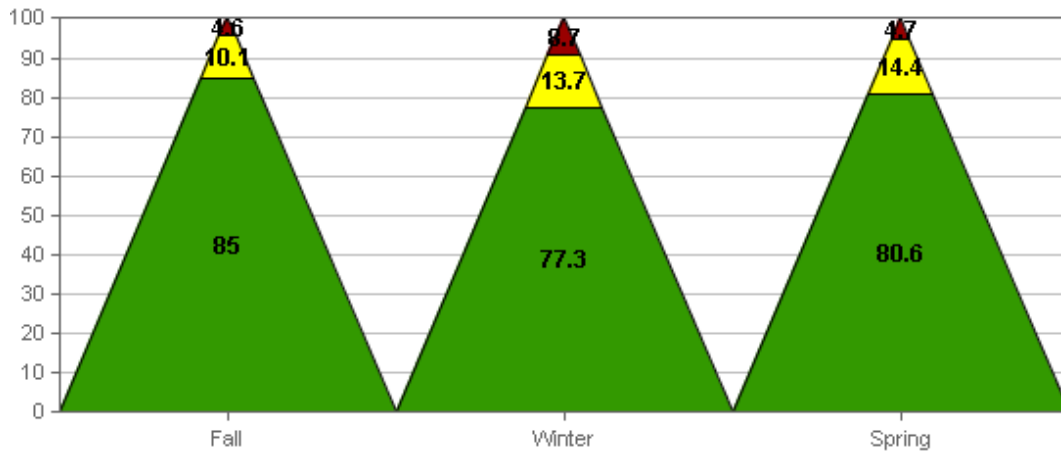
**7th Grade- Math Concepts and Applications (M-CAP)**



■ % Low Risk  
■ % Some Risk  
■ % Deficient

|   | Fall      | Winter    | Spring    |
|---|-----------|-----------|-----------|
| % | 16 (7%)   | 29 (12%)  | 22 (9%)   |
| % | 25 (10%)  | 25 (10%)  | 28 (11%)  |
| % | 205 (83%) | 196 (78%) | 195 (80%) |

**8th Grade – MAZE**



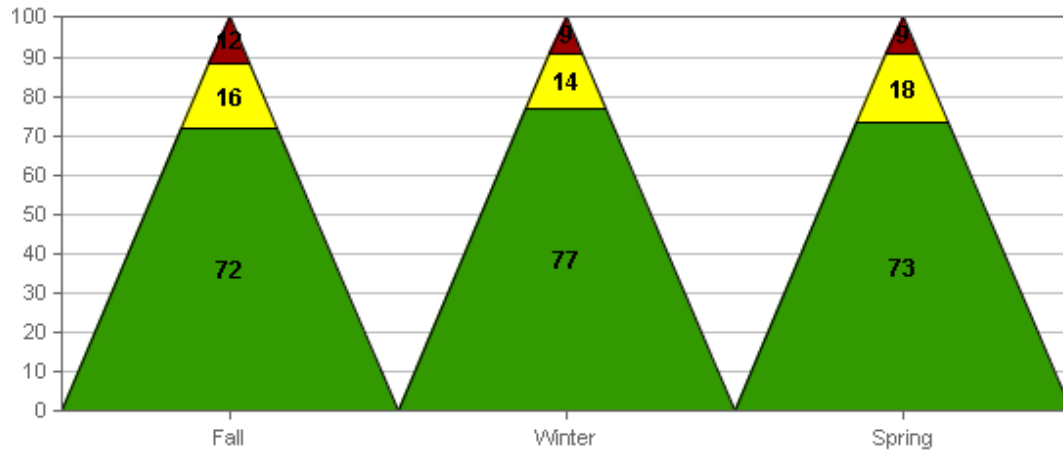
■ % Low Risk  
■ % Some Risk  
■ % At Risk

|   | Fall       | Winter      | Spring      |
|---|------------|-------------|-------------|
| % | 12 (4.6%)  | 23 (8.7%)   | 12 (4.7%)   |
| % | 26 (10.1%) | 36 (13.7%)  | 36 (14.4%)  |
| % | 217 (85%)  | 202 (77.3%) | 201 (80.6%) |

Table numbers list number of students followed by percentiles of students in each area in parenthesis.



### 8th Grade- Math Concepts and Applications (M-CAP)



■ % Low Risk  
■ % Some Risk  
■ % Deficient

|             | Fall      | Winter    | Spring    |
|-------------|-----------|-----------|-----------|
| % Deficient | 30 (12%)  | 24 (9%)   | 22 (9%)   |
| % Some Risk | 42 (16%)  | 36 (14%)  | 45 (18%)  |
| % Low Risk  | 186 (72%) | 196 (77%) | 180 (73%) |

## AIMSweb Measure Descriptions

| AIMSweb Measure                       | DESCRIPTION  |
|---------------------------------------|--|
| Letter Naming Fluency (LNF)           | The Letter Naming Fluency task requires students to identify as many upper and lower case letters from a randomly presented set of letters as they can within 1 minute.  |
| Phoneme Segmentation Fluency (PSF)    | The PSF measure assesses a student's ability to segment three- and four-phoneme words into their individual phonemes fluently. The PSF task is administered by the examiner orally presenting words of three to four phonemes. It requires the student to produce verbally the individual phonemes for each word. The number of correct phonemes produced in one minute determines the final score.  |
| Nonsense Word Fluency (NWF)           | NWF measures student skill with letter-sound correspondence and of the ability to blend letters into words in which letters represent their most common sounds. The student is presented with randomly ordered VC and CVC nonsense words and asked to produce verbally the individual letter sound of each letter or verbally produce, or read, the whole nonsense word during a one-minute period.  |
| Oral Reading Fluency (R-CBM)          | The oral reading fluency task measures the amount of correct words a student can read from a grade level passage in one minute. It is designed to measure fluency with text, the ability to translate letters-to-sounds-to-words fluently, effortlessly. The fluent reader is one whose decoding processes are automatic, requiring no conscious attention. Such capacity then enables readers to allocate their attention to the comprehension and meaning of the text. |
| Oral Counting Fluency (OCM)           | The Oral Counting measure requires students to orally count starting from 1 as high as they can within one minute.   |
| Number Identification Fluency (NIM)   | The Number Identification measure requires students to orally identify numbers. Kindergarten students identify numbers between 1 and 10 and first grade students orally identify numbers between 1 and 20.   |
| Quantity Discrimination Fluency (QDM) | The Quantity Discrimination measure requires students to orally identify the bigger number from a pair of numbers. Kindergarten students identify bigger numbers from pairs of numbers between 1 and 10 and first grade students identify bigger numbers from pairs of numbers between 1 and 20.   |

|  |   |
|--|---|
| Fluency (QDM)                          | pairs of numbers between 1 and 20.  |
| Missing Number Fluency                 | The Missing Number measure requires students to orally identify the missing number from a string of three numbers. Kindergarten students identify missing numbers from a string of numbers between 1 and 10 and first grade students identify missing numbers from a string of numbers between 1 and 20.  |
| Math Computation Fluency (M-COMP)      | AIMSweb Mathematics Computation (M-COMP) is a series of assessments that yield general math computation performance and rate of progress information. M-COMP includes three probes for benchmarking and 30 probes for progress monitoring for each grade, 1 through 8. M-COMP is a timed, 8-minute, open-ended, paper-based test that can be group administered or individually administered. |
| Math Concepts and Applications (M-CAP) | The AIMSweb Mathematics Concepts and Applications (M-CAP) is a test of short duration (8–10 minutes) that assesses the general mathematics problem-solving skills expected in grades 2–8. The test may be administered in a large or small group setting or to individual students.   |

In addition to the information included in this report, which all districts have a statutory obligation to complete, the “Superintendent’s Report to the Board of Education” is presented each year in a public setting and includes additional student achievement data, financial statements, survey data and other pertinent data specific to the school year. The cover letter that accompanies this report can be found on the district website, on the “Superintendent’s Page”. If interested, a copy of the report is available through my office at 841 Timberlane, East Lansing, MI. Our telephone number is 517-333-7424.

I encourage all that are interested in our very fine school district to track our progress and stay active in the public discussion. I am certain our very interested, insightful and caring community will continue to be a catalyst for ongoing improvement.

Sincerely,

David B. Chapin

Superintendent



### Combined Reports Data for Ingham ISD, East Lansing School District

#### Student Assessment Data - Michigan Educational Assessment Program (MEAP)

| Subject                         | Grade | Student Group                               | School Year | % Students Tested | State % Students Proficient | District % Students Proficient | % Advanced (Level 1) | % Proficient (Level 2) | % Partially Proficient (Level 3) | % Not Proficient (Level 4) |
|---------------------------------|-------|---|-------------|-------------------|-----------------------------|--------------------------------|----------------------|------------------------|----------------------------------|----------------------------|
| English Language Arts / Reading | 03    | All Students                                | 2009-10     | 100%              | 89.8%                       | 94.9%                          | 45.2%                | 49.8%                  | 4.6%                             | 0.5%                       |
| English Language Arts / Reading | 03    | All Students                                | 2010-11     | 100%              | 86.8%                       | 90.2%                          | 54.3%                | 35.9%                  | 6.8%                             | 3%                         |
| English Language Arts / Reading | 03    | American Indian or Alaska Native            | 2009-10     | <10               | 84.9%                       | <10                            | <10                  | <10                    | <10                              | <10                        |
| English Language Arts / Reading | 03    | American Indian or Alaska Native            | 2010-11     | <10               | 85%                         | <10                            | <10                  | <10                    | <10                              | <10                        |
| English Language Arts / Reading | 03    | Asian, Native Hawaiian, or Pacific Islander | 2009-10     | 100%              | 95.1%                       | 92.3%                          | 34.6%                | 57.7%                  | 7.7%                             | 0%                         |
| English Language Arts / Reading | 03    | Asian, Native Hawaiian, or Pacific Islander | 2010-11     | 100%              | 93.9%                       | 100%                           | 76.9%                | 23.1%                  | 0%                               | 0%                         |
| English Language Arts / Reading | 03    | Black or African American                   | 2009-10     | 100%              | 80.6%                       | 95.6%                          | 42.2%                | 53.3%                  | 4.4%                             | 0%                         |
| English Language Arts / Reading | 03    | Black or African American                   | 2010-11     | 100%              | 74.7%                       | 75.8%                          | 33.3%                | 42.4%                  | 15.2%                            | 9.1%                       |
| English Language Arts / Reading | 03    | Hispanic or Latino                          | 2009-10     | <10               | 84.6%                       | <10                            | <10                  | <10                    | <10                              | <10                        |
| English Language Arts / Reading | 03    | Hispanic or Latino                          | 2010-11     | 100%              | 79.8%                       | 78.6%                          | 28.6%                | 50%                    | 14.3%                            | 7.1%                       |
| English Language Arts / Reading | 03    | Two or More Races                           | 2010-11     | 100%              | 86.4%                       | 85.7%                          | 33.3%                | 52.4%                  | 4.8%                             | 9.5%                       |
| English Language Arts / Reading | 03    | White                                       | 2009-10     | 100%              | 92.7%                       | 95.5%                          | 49.3%                | 46.3%                  | 3.7%                             | 0.7%                       |
| English Language Arts / Reading | 03    | White                                       | 2010-11     | 100%              | 90.4%                       | 94.2%                          | 61.6%                | 32.6%                  | 5.1%                             | 0.7%                       |
| English Language Arts / Reading | 03    | Female                                      | 2009-10     | 100%              | 91.9%                       | 94.5%                          | 41.8%                | 52.7%                  | 5.5%                             | 0%                         |
| English Language Arts / Reading | 03    | Female                                      | 2010-11     | 100%              | 89.3%                       | 92.4%                          | 55.5%                | 37%                    | 5%                               | 2.5%                       |
| English Language Arts / Reading | 03    | Male  | 2009-10     | 100%              | 87.9%                       | 95.3%                          | 48.6%                | 46.7%                  | 3.7%                             | 0.9%                       |
| English Language Arts / Reading | 03    | Male  | 2010-11     | 100%              | 84.3%                       | 87.8%                          | 53%                  | 34.8%                  | 8.7%                             | 3.5%                       |
| English Language Arts / Reading | 03    | Economically Disadvantaged                  | 2009-10     | 100%              | 84.5%                       | 89.6%                          | 32.8%                | 56.7%                  | 9%                               | 1.5%                       |
| English Language Arts / Reading | 03    | Economically Disadvantaged                  | 2010-11     | 100%              | 80.2%                       | 83.1%                          | 37.7%                | 45.5%                  | 9.1%                             | 7.8%                       |

### Combined Reports Data for Ingham ISD, East Lansing School District

#### Student Assessment Data - Michigan Educational Assessment Program (MEAP)

| Subject                         | Grade | Student Group                               | School Year | % Students Tested | State % Students Proficient | District % Students Proficient | % Advanced (Level 1) | % Proficient (Level 2) | % Partially Proficient (Level 3) | % Not Proficient (Level 4) |
|---------------------------------|-------|---|-------------|-------------------|-----------------------------|--------------------------------|----------------------|------------------------|----------------------------------|----------------------------|
| English Language Arts / Reading | 03    | Limited English Proficient                  | 2009-10     | 100%              | 82.2%                       | 81%                            | 14.3%                | 66.7%                  | 19%                              | 0%                         |
| English Language Arts / Reading | 03    | Limited English Proficient                  | 2010-11     | 100%              | 71.3%                       | 64.3%                          | 35.7%                | 28.6%                  | 28.6%                            | 7.1%                       |
| English Language Arts / Reading | 03    | Students with Disabilities                  | 2009-10     | 100%              | 71%                         | 80%                            | 5%                   | 75%                    | 15%                              | 5%                         |
| English Language Arts / Reading | 03    | Students with Disabilities                  | 2010-11     | 100%              | 62.1%                       | 55.6%                          | 11.1%                | 44.4%                  | 22.2%                            | 22.2%                      |
| English Language Arts / Reading | 04    | All Students                                | 2009-10     | 100%              | 84.1%                       | 90%                            | 49.3%                | 40.7%                  | 9.5%                             | 0.5%                       |
| English Language Arts / Reading | 04    | All Students                                | 2010-11     | 100%              | 84.1%                       | 90.4%                          | 42%                  | 48.4%                  | 8.7%                             | 0.9%                       |
| English Language Arts / Reading | 04    | American Indian or Alaska Native            | 2009-10     | <10               | 83.5%                       | <10                            | <10                  | <10                    | <10                              | <10                        |
| English Language Arts / Reading | 04    | American Indian or Alaska Native            | 2010-11     | <10               | 77.4%                       | <10                            | <10                  | <10                    | <10                              | <10                        |
| English Language Arts / Reading | 04    | Asian, Native Hawaiian, or Pacific Islander | 2009-10     | 100%              | 90.5%                       | 91.4%                          | 51.4%                | 40%                    | 8.6%                             | 0%                         |
| English Language Arts / Reading | 04    | Asian, Native Hawaiian, or Pacific Islander | 2010-11     | 100%              | 91.8%                       | 78.9%                          | 36.8%                | 42.1%                  | 21.1%                            | 0%                         |
| English Language Arts / Reading | 04    | Black or African American                   | 2009-10     | 100%              | 68.6%                       | 79.5%                          | 41%                  | 38.5%                  | 20.5%                            | 0%                         |
| English Language Arts / Reading | 04    | Black or African American                   | 2010-11     | 100%              | 69.1%                       | 80.6%                          | 25.8%                | 54.8%                  | 12.9%                            | 6.5%                       |
| English Language Arts / Reading | 04    | Hispanic or Latino                          | 2009-10     | <10               | 74.3%                       | <10                            | <10                  | <10                    | <10                              | <10                        |
| English Language Arts / Reading | 04    | Hispanic or Latino                          | 2010-11     | 100%              | 77.9%                       | 85.7%                          | 33.3%                | 52.4%                  | 14.3%                            | 0%                         |
| English Language Arts / Reading | 04    | Two or More Races                           | 2009-10     | <10               | 81.1%                       | <10                            | <10                  | <10                    | <10                              | <10                        |
| English Language Arts / Reading | 04    | Two or More Races                           | 2010-11     | 100%              | 83.6%                       | 90.9%                          | 31.8%                | 59.1%                  | 9.1%                             | 0%                         |
| English Language Arts / Reading | 04    | White                                       | 2009-10     | 100%              | 88.9%                       | 91.9%                          | 52.9%                | 39%                    | 7.4%                             | 0.7%                       |
| English Language Arts / Reading | 04    | White                                       | 2010-11     | 100%              | 88.5%                       | 95.2%                          | 49.6%                | 45.6%                  | 4.8%                             | 0%                         |
| English Language Arts / Reading | 04    | Female                                      | 2009-10     | 100%              | 86.1%                       | 91.5%                          | 50.9%                | 40.6%                  | 8.5%                             | 0%                         |

### Combined Reports Data for Ingham ISD, East Lansing School District

#### Student Assessment Data - Michigan Educational Assessment Program (MEAP)

| Subject                         | Grade | Student Group                               | School Year | % Students Tested | State % Students Proficient | District % Students Proficient | % Advanced (Level 1) | % Proficient (Level 2) | % Partially Proficient (Level 3) | % Not Proficient (Level 4) |
|---------------------------------|-------|---|-------------|-------------------|-----------------------------|--------------------------------|----------------------|------------------------|----------------------------------|----------------------------|
| English Language Arts / Reading | 04    | Female                                      | 2010-11     | 100%              | 87%                         | 92.4%                          | 41.5%                | 50.8%                  | 7.6%                             | 0%                         |
| English Language Arts / Reading | 04    | Male  | 2009-10     | 100%              | 82.1%                       | 88.7%                          | 47.8%                | 40.9%                  | 10.4%                            | 0.9%                       |
| English Language Arts / Reading | 04    | Male  | 2010-11     | 100%              | 81.3%                       | 88.1%                          | 42.6%                | 45.5%                  | 9.9%                             | 2%                         |
| English Language Arts / Reading | 04    | Economically Disadvantaged                  | 2009-10     | 100%              | 75.7%                       | 85.3%                          | 30.9%                | 54.4%                  | 14.7%                            | 0%                         |
| English Language Arts / Reading | 04    | Economically Disadvantaged                  | 2010-11     | 100%              | 76.1%                       | 85.9%                          | 31.3%                | 54.7%                  | 14.1%                            | 0%                         |
| English Language Arts / Reading | 04    | Limited English Proficient                  | 2009-10     | 100%              | 64.3%                       | 64.3%                          | 28.6%                | 35.7%                  | 35.7%                            | 0%                         |
| English Language Arts / Reading | 04    | Limited English Proficient                  | 2010-11     | 100%              | 66.5%                       | 71.4%                          | 7.1%                 | 64.3%                  | 28.6%                            | 0%                         |
| English Language Arts / Reading | 04    | Students with Disabilities                  | 2009-10     | 100%              | 58%                         | 65.2%                          | 21.7%                | 43.5%                  | 30.4%                            | 4.3%                       |
| English Language Arts / Reading | 04    | Students with Disabilities                  | 2010-11     | 100%              | 54.2%                       | 77.8%                          | 11.1%                | 66.7%                  | 22.2%                            | 0%                         |
| English Language Arts / Reading | 05    | All Students                                | 2009-10     | 100%              | 85.2%                       | 88.4%                          | 51.2%                | 37.2%                  | 7.2%                             | 4.4%                       |
| English Language Arts / Reading | 05    | All Students                                | 2010-11     | 100%              | 85.1%                       | 89.7%                          | 54.3%                | 35.3%                  | 5.6%                             | 4.7%                       |
| English Language Arts / Reading | 05    | American Indian or Alaska Native            | 2009-10     | <10               | 82.5%                       | <10                            | <10                  | <10                    | <10                              | <10                        |
| English Language Arts / Reading | 05    | American Indian or Alaska Native            | 2010-11     | <10               | 83.3%                       | <10                            | <10                  | <10                    | <10                              | <10                        |
| English Language Arts / Reading | 05    | Asian, Native Hawaiian, or Pacific Islander | 2009-10     | 100%              | 90.6%                       | 88.9%                          | 51.9%                | 37%                    | 7.4%                             | 3.7%                       |
| English Language Arts / Reading | 05    | Asian, Native Hawaiian, or Pacific Islander | 2010-11     | 100%              | 92.2%                       | 83.3%                          | 45.8%                | 37.5%                  | 12.5%                            | 4.2%                       |
| English Language Arts / Reading | 05    | Black or African American                   | 2009-10     | 100%              | 70.4%                       | 75.5%                          | 30.6%                | 44.9%                  | 16.3%                            | 8.2%                       |
| English Language Arts / Reading | 05    | Black or African American                   | 2010-11     | 100%              | 71.6%                       | 78.9%                          | 39.5%                | 39.5%                  | 15.8%                            | 5.3%                       |
| English Language Arts / Reading | 05    | Hispanic or Latino                          | 2009-10     | 100%              | 74.6%                       | 86.7%                          | 40%                  | 46.7%                  | 13.3%                            | 0%                         |
| English Language Arts / Reading | 05    | Hispanic or Latino                          | 2010-11     | 100%              | 78.5%                       | 100%                           | 40%                  | 60%                    | 0%                               | 0%                         |

### Combined Reports Data for Ingham ISD, East Lansing School District

#### Student Assessment Data - Michigan Educational Assessment Program (MEAP)

| Subject                         | Grade | Student Group                               | School Year | % Students Tested | State % Students Proficient | District % Students Proficient | % Advanced (Level 1) | % Proficient (Level 2) | % Partially Proficient (Level 3) | % Not Proficient (Level 4) |
|---------------------------------|-------|---|-------------|-------------------|-----------------------------|--------------------------------|----------------------|------------------------|----------------------------------|----------------------------|
| English Language Arts / Reading | 05    | Two or More Races                           | 2009-10     | <10               | 83.9%                       | <10                            | <10                  | <10                    | <10                              | <10                        |
| English Language Arts / Reading | 05    | Two or More Races                           | 2010-11     | 100%              | 85.2%                       | 90%                            | 65%                  | 25%                    | 0%                               | 10%                        |
| English Language Arts / Reading | 05    | White                                       | 2009-10     | 100%              | 89.8%                       | 92.7%                          | 60.3%                | 32.5%                  | 3.3%                             | 4%                         |
| English Language Arts / Reading | 05    | White                                       | 2010-11     | 100%              | 89%                         | 92.8%                          | 59%                  | 33.8%                  | 2.9%                             | 4.3%                       |
| English Language Arts / Reading | 05    | Female                                      | 2009-10     | 100%              | 86.8%                       | 89.5%                          | 56.5%                | 33.1%                  | 8.9%                             | 1.6%                       |
| English Language Arts / Reading | 05    | Female                                      | 2010-11     | 100%              | 87.7%                       | 91.7%                          | 54.1%                | 37.6%                  | 5.5%                             | 2.8%                       |
| English Language Arts / Reading | 05    | Male  | 2009-10     | 100%              | 83.5%                       | 87.3%                          | 46%                  | 41.3%                  | 5.6%                             | 7.1%                       |
| English Language Arts / Reading | 05    | Male  | 2010-11     | 100%              | 82.6%                       | 87.8%                          | 54.5%                | 33.3%                  | 5.7%                             | 6.5%                       |
| English Language Arts / Reading | 05    | Economically Disadvantaged                  | 2009-10     | 100%              | 76.6%                       | 79%                            | 25.9%                | 53.1%                  | 14.8%                            | 6.2%                       |
| English Language Arts / Reading | 05    | Economically Disadvantaged                  | 2010-11     | 100%              | 77.4%                       | 86.3%                          | 38.4%                | 47.9%                  | 8.2%                             | 5.5%                       |
| English Language Arts / Reading | 05    | Limited English Proficient                  | 2009-10     | 100%              | 61.8%                       | 76.9%                          | 23.1%                | 53.8%                  | 15.4%                            | 7.7%                       |
| English Language Arts / Reading | 05    | Limited English Proficient                  | 2010-11     | <10               | 63.3%                       | <10                            | <10                  | <10                    | <10                              | <10                        |
| English Language Arts / Reading | 05    | Students with Disabilities                  | 2009-10     | 100%              | 57.6%                       | 44%                            | 8%                   | 36%                    | 24%                              | 32%                        |
| English Language Arts / Reading | 05    | Students with Disabilities                  | 2010-11     | 100%              | 53%                         | 72.7%                          | 31.8%                | 40.9%                  | 13.6%                            | 13.6%                      |
| English Language Arts / Reading | 06    | All Students                                | 2009-10     | 100%              | 87.7%                       | 90.6%                          | 39.3%                | 51.3%                  | 7.7%                             | 1.7%                       |
| English Language Arts / Reading | 06    | All Students                                | 2010-11     | 100%              | 84%                         | 91.3%                          | 43.7%                | 47.6%                  | 5.6%                             | 3.2%                       |
| English Language Arts / Reading | 06    | American Indian or Alaska Native            | 2009-10     | <10               | 84.7%                       | <10                            | <10                  | <10                    | <10                              | <10                        |
| English Language Arts / Reading | 06    | American Indian or Alaska Native            | 2010-11     | <10               | 80.2%                       | <10                            | <10                  | <10                    | <10                              | <10                        |
| English Language Arts / Reading | 06    | Asian, Native Hawaiian, or Pacific Islander | 2009-10     | 100%              | 93.8%                       | 94.4%                          | 55.6%                | 38.9%                  | 5.6%                             | 0%                         |



### Combined Reports Data for Ingham ISD, East Lansing School District

#### Student Assessment Data - Michigan Educational Assessment Program (MEAP)

| Subject                         | Grade | Student Group                               | School Year | % Students Tested | State % Students Proficient | District % Students Proficient | % Advanced (Level 1) | % Proficient (Level 2) | % Partially Proficient (Level 3) | % Not Proficient (Level 4) |
|---------------------------------|-------|---|-------------|-------------------|-----------------------------|--------------------------------|----------------------|------------------------|----------------------------------|----------------------------|
| English Language Arts / Reading | 06    | Asian, Native Hawaiian, or Pacific Islander | 2010-11     | 100%              | 91.3%                       | 88.9%                          | 22.2%                | 66.7%                  | 11.1%                            | 0%                         |
| English Language Arts / Reading | 06    | Black or African American                   | 2009-10     | 100%              | 75.8%                       | 84.6%                          | 25%                  | 59.6%                  | 11.5%                            | 3.8%                       |
| English Language Arts / Reading | 06    | Black or African American                   | 2010-11     | 100%              | 68.3%                       | 81.4%                          | 25.6%                | 55.8%                  | 16.3%                            | 2.3%                       |
| English Language Arts / Reading | 06    | Hispanic or Latino                          | 2009-10     | 100%              | 82.3%                       | 94.1%                          | 23.5%                | 70.6%                  | 5.9%                             | 0%                         |
| English Language Arts / Reading | 06    | Hispanic or Latino                          | 2010-11     | 100%              | 75.4%                       | 100%                           | 50%                  | 50%                    | 0%                               | 0%                         |
| English Language Arts / Reading | 06    | Two or More Races                           | 2009-10     | <10               | 87%                         | <10                            | <10                  | <10                    | <10                              | <10                        |
| English Language Arts / Reading | 06    | Two or More Races                           | 2010-11     | 100%              | 83.1%                       | 80%                            | 26.7%                | 53.3%                  | 13.3%                            | 6.7%                       |
| English Language Arts / Reading | 06    | White                                       | 2009-10     | 100%              | 91.1%                       | 92.3%                          | 44.4%                | 47.9%                  | 6.3%                             | 1.4%                       |
| English Language Arts / Reading | 06    | White                                       | 2010-11     | 100%              | 88.8%                       | 94%                            | 52.3%                | 41.7%                  | 2%                               | 4%                         |
| English Language Arts / Reading | 06    | Female                                      | 2009-10     | 100%              | 90%                         | 95.7%                          | 46.1%                | 49.6%                  | 3.5%                             | 0.9%                       |
| English Language Arts / Reading | 06    | Female                                      | 2010-11     | 100%              | 86.9%                       | 95.2%                          | 46.8%                | 48.4%                  | 4%                               | 0.8%                       |
| English Language Arts / Reading | 06    | Male  | 2009-10     | 100%              | 85.4%                       | 85.7%                          | 32.8%                | 52.9%                  | 11.8%                            | 2.5%                       |
| English Language Arts / Reading | 06    | Male  | 2010-11     | 100%              | 81.2%                       | 87.5%                          | 40.6%                | 46.9%                  | 7%                               | 5.5%                       |
| English Language Arts / Reading | 06    | Economically Disadvantaged                  | 2009-10     | 100%              | 81.1%                       | 83.1%                          | 23.9%                | 59.2%                  | 14.1%                            | 2.8%                       |
| English Language Arts / Reading | 06    | Economically Disadvantaged                  | 2010-11     | 100%              | 75.6%                       | 81.8%                          | 24.2%                | 57.6%                  | 13.6%                            | 4.5%                       |
| English Language Arts / Reading | 06    | Limited English Proficient                  | 2009-10     | 100%              | 70%                         | 76.9%                          | 7.7%                 | 69.2%                  | 23.1%                            | 0%                         |
| English Language Arts / Reading | 06    | Limited English Proficient                  | 2010-11     | <10               | 51.3%                       | <10                            | <10                  | <10                    | <10                              | <10                        |
| English Language Arts / Reading | 06    | Students with Disabilities                  | 2009-10     | 100%              | 59.9%                       | 63.6%                          | 4.5%                 | 59.1%                  | 22.7%                            | 13.6%                      |
| English Language Arts / Reading | 06    | Students with Disabilities                  | 2010-11     | 100%              | 48.5%                       | 47.6%                          | 0%                   | 47.6%                  | 23.8%                            | 28.6%                      |
| English Language Arts / Reading | 07    | All Students                                | 2009-10     | 100%              | 82%                         | 86.5%                          | 48.8%                | 37.7%                  | 8.7%                             | 4.8%                       |

### Combined Reports Data for Ingham ISD, East Lansing School District

#### Student Assessment Data - Michigan Educational Assessment Program (MEAP)

| Subject                         | Grade | Student Group                               | School Year | % Students Tested | State % Students Proficient | District % Students Proficient | % Advanced (Level 1) | % Proficient (Level 2) | % Partially Proficient (Level 3) | % Not Proficient (Level 4) |
|---------------------------------|-------|---|-------------|-------------------|-----------------------------|--------------------------------|----------------------|------------------------|----------------------------------|----------------------------|
| English Language Arts / Reading | 07    | All Students                                | 2010-11     | 100%              | 79%                         | 84.9%                          | 46.6%                | 38.2%                  | 7.6%                             | 7.6%                       |
| English Language Arts / Reading | 07    | American Indian or Alaska Native            | 2009-10     | <10               | 79.2%                       | <10                            | <10                  | <10                    | <10                              | <10                        |
| English Language Arts / Reading | 07    | American Indian or Alaska Native            | 2010-11     | <10               | 73.8%                       | <10                            | <10                  | <10                    | <10                              | <10                        |
| English Language Arts / Reading | 07    | Asian, Native Hawaiian, or Pacific Islander | 2009-10     | 100%              | 89.9%                       | 86.4%                          | 59.1%                | 27.3%                  | 13.6%                            | 0%                         |
| English Language Arts / Reading | 07    | Asian, Native Hawaiian, or Pacific Islander | 2010-11     | 100%              | 89.1%                       | 85.7%                          | 42.9%                | 42.9%                  | 14.3%                            | 0%                         |
| English Language Arts / Reading | 07    | Black or African American                   | 2009-10     | 100%              | 64.4%                       | 73.8%                          | 36.1%                | 37.7%                  | 14.8%                            | 11.5%                      |
| English Language Arts / Reading | 07    | Black or African American                   | 2010-11     | 100%              | 60%                         | 76.9%                          | 32.7%                | 44.2%                  | 13.5%                            | 9.6%                       |
| English Language Arts / Reading | 07    | Hispanic or Latino                          | 2009-10     | 100%              | 71.7%                       | 78.9%                          | 26.3%                | 52.6%                  | 15.8%                            | 5.3%                       |
| English Language Arts / Reading | 07    | Hispanic or Latino                          | 2010-11     | 100%              | 71.6%                       | 81.5%                          | 25.9%                | 55.6%                  | 3.7%                             | 14.8%                      |
| English Language Arts / Reading | 07    | Two or More Races                           | 2009-10     | <10               | 77.4%                       | <10                            | <10                  | <10                    | <10                              | <10                        |
| English Language Arts / Reading | 07    | Two or More Races                           | 2010-11     | 100%              | 79.2%                       | 87.5%                          | 37.5%                | 50%                    | 0%                               | 12.5%                      |
| English Language Arts / Reading | 07    | White                                       | 2009-10     | 100%              | 87.3%                       | 93.2%                          | 56.8%                | 36.3%                  | 4.1%                             | 2.7%                       |
| English Language Arts / Reading | 07    | White                                       | 2010-11     | 100%              | 84.4%                       | 87.9%                          | 56.7%                | 31.2%                  | 6.4%                             | 5.7%                       |
| English Language Arts / Reading | 07    | Female                                      | 2009-10     | 100%              | 84.5%                       | 85.7%                          | 48.7%                | 37%                    | 9.2%                             | 5%                         |
| English Language Arts / Reading | 07    | Female                                      | 2010-11     | 100%              | 83.3%                       | 89.1%                          | 56.3%                | 32.8%                  | 6.3%                             | 4.7%                       |
| English Language Arts / Reading | 07    | Male  | 2009-10     | 100%              | 79.6%                       | 87.2%                          | 48.9%                | 38.3%                  | 8.3%                             | 4.5%                       |
| English Language Arts / Reading | 07    | Male  | 2010-11     | 100%              | 75%                         | 80.5%                          | 36.6%                | 43.9%                  | 8.9%                             | 10.6%                      |
| English Language Arts / Reading | 07    | Economically Disadvantaged                  | 2009-10     | 100%              | 72.4%                       | 71.8%                          | 25.9%                | 45.9%                  | 20%                              | 8.2%                       |
| English Language Arts / Reading | 07    | Economically Disadvantaged                  | 2010-11     | 100%              | 68.6%                       | 77.6%                          | 25.4%                | 52.2%                  | 11.9%                            | 10.4%                      |

### Combined Reports Data for Ingham ISD, East Lansing School District

#### Student Assessment Data - Michigan Educational Assessment Program (MEAP)

| Subject                         | Grade | Student Group                               | School Year | % Students Tested | State % Students Proficient | District % Students Proficient | % Advanced (Level 1) | % Proficient (Level 2) | % Partially Proficient (Level 3) | % Not Proficient (Level 4) |
|---------------------------------|-------|---|-------------|-------------------|-----------------------------|--------------------------------|----------------------|------------------------|----------------------------------|----------------------------|
| English Language Arts / Reading | 07    | Limited English Proficient                  | 2009-10     | <10               | 54.3%                       | <10                            | <10                  | <10                    | <10                              | <10                        |
| English Language Arts / Reading | 07    | Limited English Proficient                  | 2010-11     | <10               | 47.7%                       | <10                            | <10                  | <10                    | <10                              | <10                        |
| English Language Arts / Reading | 07    | Students with Disabilities                  | 2009-10     | 100%              | 48%                         | 61.5%                          | 19.2%                | 42.3%                  | 11.5%                            | 26.9%                      |
| English Language Arts / Reading | 07    | Students with Disabilities                  | 2010-11     | 100%              | 36.3%                       | 50%                            | 18.2%                | 31.8%                  | 22.7%                            | 27.3%                      |
| English Language Arts / Reading | 08    | All Students                                | 2009-10     | 100%              | 83.4%                       | 89.1%                          | 46.9%                | 42.2%                  | 9%                               | 2%                         |
| English Language Arts / Reading | 08    | All Students                                | 2010-11     | 100%              | 81.9%                       | 91.1%                          | 48.6%                | 42.5%                  | 6.9%                             | 1.9%                       |
| English Language Arts / Reading | 08    | American Indian or Alaska Native            | 2009-10     | <10               | 80.7%                       | <10                            | <10                  | <10                    | <10                              | <10                        |
| English Language Arts / Reading | 08    | Asian, Native Hawaiian, or Pacific Islander | 2009-10     | 100%              | 91%                         | 93.1%                          | 55.2%                | 37.9%                  | 3.4%                             | 3.4%                       |
| English Language Arts / Reading | 08    | Asian, Native Hawaiian, or Pacific Islander | 2010-11     | 100%              | 90.5%                       | 90.5%                          | 52.4%                | 38.1%                  | 9.5%                             | 0%                         |
| English Language Arts / Reading | 08    | Black or African American                   | 2009-10     | 100%              | 70.9%                       | 79.6%                          | 28.6%                | 51%                    | 16.3%                            | 4.1%                       |
| English Language Arts / Reading | 08    | Black or African American                   | 2010-11     | 100%              | 67.4%                       | 90.6%                          | 24.5%                | 66%                    | 5.7%                             | 3.8%                       |
| English Language Arts / Reading | 08    | Hispanic or Latino                          | 2009-10     | 100%              | 76.5%                       | 83.3%                          | 38.9%                | 44.4%                  | 16.7%                            | 0%                         |
| English Language Arts / Reading | 08    | Hispanic or Latino                          | 2010-11     | 100%              | 74.5%                       | 87.5%                          | 25%                  | 62.5%                  | 8.3%                             | 4.2%                       |
| English Language Arts / Reading | 08    | Two or More Races                           | 2009-10     | <10               | 79.1%                       | <10                            | <10                  | <10                    | <10                              | <10                        |
| English Language Arts / Reading | 08    | Two or More Races                           | 2010-11     | 100%              | 83.7%                       | 81.3%                          | 43.8%                | 37.5%                  | 12.5%                            | 6.3%                       |
| English Language Arts / Reading | 08    | White                                       | 2009-10     | 100%              | 86.9%                       | 91.6%                          | 53.2%                | 38.3%                  | 7.1%                             | 1.3%                       |
| English Language Arts / Reading | 08    | White                                       | 2010-11     | 100%              | 85.9%                       | 93.1%                          | 61.4%                | 31.7%                  | 6.2%                             | 0.7%                       |
| English Language Arts / Reading | 08    | Female                                      | 2009-10     | 100%              | 87.5%                       | 89.9%                          | 54.7%                | 35.3%                  | 8.6%                             | 1.4%                       |
| English Language Arts / Reading | 08    | Female                                      | 2010-11     | 100%              | 86.1%                       | 90.7%                          | 48.1%                | 42.6%                  | 7%                               | 2.3%                       |

### Combined Reports Data for Ingham ISD, East Lansing School District

#### Student Assessment Data - Michigan Educational Assessment Program (MEAP)

| Subject                         | Grade | Student Group                               | School Year | % Students Tested | State % Students Proficient | District % Students Proficient | % Advanced (Level 1) | % Proficient (Level 2) | % Partially Proficient (Level 3) | % Not Proficient (Level 4) |
|---------------------------------|-------|---|-------------|-------------------|-----------------------------|--------------------------------|----------------------|------------------------|----------------------------------|----------------------------|
| English Language Arts / Reading | 08    | Male  | 2009-10     | 100%              | 79.4%                       | 88%                            | 37.6%                | 50.4%                  | 9.4%                             | 2.6%                       |
| English Language Arts / Reading | 08    | Male  | 2010-11     | 100%              | 77.8%                       | 91.5%                          | 49.2%                | 42.3%                  | 6.9%                             | 1.5%                       |
| English Language Arts / Reading | 08    | Economically Disadvantaged                  | 2009-10     | 100%              | 75%                         | 79.5%                          | 26.9%                | 52.6%                  | 16.7%                            | 3.8%                       |
| English Language Arts / Reading | 08    | Economically Disadvantaged                  | 2010-11     | 100%              | 72.7%                       | 80.3%                          | 16.9%                | 63.4%                  | 12.7%                            | 7%                         |
| English Language Arts / Reading | 08    | Limited English Proficient                  | 2009-10     | 100%              | 61%                         | 66.7%                          | 0%                   | 66.7%                  | 25%                              | 8.3%                       |
| English Language Arts / Reading | 08    | Limited English Proficient                  | 2010-11     | 100%              | 55.8%                       | 80%                            | 20%                  | 60%                    | 20%                              | 0%                         |
| English Language Arts / Reading | 08    | Students with Disabilities                  | 2009-10     | 100%              | 48.6%                       | 57.1%                          | 9.5%                 | 47.6%                  | 28.6%                            | 14.3%                      |
| English Language Arts / Reading | 08    | Students with Disabilities                  | 2010-11     | 100%              | 43%                         | 36.8%                          | 5.3%                 | 31.6%                  | 47.4%                            | 15.8%                      |
| Mathematics                     | 03    | All Students                                | 2009-10     | 100%              | 94.8%                       | 95.9%                          | 64.8%                | 31.1%                  | 4.1%                             | 0%                         |
| Mathematics                     | 03    | All Students                                | 2010-11     | 100%              | 95.3%                       | 97.9%                          | 67.9%                | 30%                    | 2.1%                             | 0%                         |
| Mathematics                     | 03    | American Indian or Alaska Native            | 2009-10     | <10               | 92.8%                       | <10                            | <10                  | <10                    | <10                              | <10                        |
| Mathematics                     | 03    | American Indian or Alaska Native            | 2010-11     | <10               | 95.1%                       | <10                            | <10                  | <10                    | <10                              | <10                        |
| Mathematics                     | 03    | Asian, Native Hawaiian, or Pacific Islander | 2009-10     | 100%              | 98%                         | 92.9%                          | 57.1%                | 35.7%                  | 7.1%                             | 0%                         |
| Mathematics                     | 03    | Asian, Native Hawaiian, or Pacific Islander | 2010-11     | 100%              | 98.2%                       | 100%                           | 82.1%                | 17.9%                  | 0%                               | 0%                         |
| Mathematics                     | 03    | Black or African American                   | 2009-10     | 100%              | 87.7%                       | 97.8%                          | 51.1%                | 46.7%                  | 2.2%                             | 0%                         |
| Mathematics                     | 03    | Black or African American                   | 2010-11     | 100%              | 88.6%                       | 93.8%                          | 43.8%                | 50%                    | 6.3%                             | 0%                         |
| Mathematics                     | 03    | Hispanic or Latino                          | 2009-10     | <10               | 92.3%                       | <10                            | <10                  | <10                    | <10                              | <10                        |
| Mathematics                     | 03    | Hispanic or Latino                          | 2010-11     | 100%              | 93.5%                       | 100%                           | 33.3%                | 66.7%                  | 0%                               | 0%                         |
| Mathematics                     | 03    | Two or More Races                           | 2010-11     | 100%              | 95.8%                       | 95.2%                          | 71.4%                | 23.8%                  | 4.8%                             | 0%                         |
| Mathematics                     | 03    | White                                       | 2009-10     | 100%              | 96.9%                       | 95.5%                          | 71.6%                | 23.9%                  | 4.5%                             | 0%                         |
| Mathematics                     | 03    | White                                       | 2010-11     | 100%              | 97.1%                       | 98.6%                          | 74.1%                | 24.5%                  | 1.4%                             | 0%                         |
| Mathematics                     | 03    | Female                                      | 2009-10     | 100%              | 94.8%                       | 93.7%                          | 62.2%                | 31.5%                  | 6.3%                             | 0%                         |

### Combined Reports Data for Ingham ISD, East Lansing School District

#### Student Assessment Data - Michigan Educational Assessment Program (MEAP)

| Subject     | Grade | Student Group                               | School Year | % Students Tested | State % Students Proficient | District % Students Proficient | % Advanced (Level 1) | % Proficient (Level 2) | % Partially Proficient (Level 3) | % Not Proficient (Level 4) |
|-------------|-------|---|-------------|-------------------|-----------------------------|--------------------------------|----------------------|------------------------|----------------------------------|----------------------------|
| Mathematics | 03    | Female                                      | 2010-11     | 100%              | 95.3%                       | 96.6%                          | 68.6%                | 28%                    | 3.4%                             | 0%                         |
| Mathematics | 03    | Male  | 2009-10     | 100%              | 94.8%                       | 98.1%                          | 67.6%                | 30.6%                  | 1.9%                             | 0%                         |
| Mathematics | 03    | Male  | 2010-11     | 100%              | 95.3%                       | 99.2%                          | 67.2%                | 31.9%                  | 0.8%                             | 0%                         |
| Mathematics | 03    | Economically Disadvantaged                  | 2009-10     | 100%              | 91.9%                       | 95.6%                          | 48.5%                | 47.1%                  | 4.4%                             | 0%                         |
| Mathematics | 03    | Economically Disadvantaged                  | 2010-11     | 100%              | 92.7%                       | 95%                            | 48.8%                | 46.3%                  | 5%                               | 0%                         |
| Mathematics | 03    | Limited English Proficient                  | 2009-10     | 100%              | 92.1%                       | 91.3%                          | 43.5%                | 47.8%                  | 8.7%                             | 0%                         |
| Mathematics | 03    | Limited English Proficient                  | 2010-11     | 100%              | 92.1%                       | 94.1%                          | 47.1%                | 47.1%                  | 5.9%                             | 0%                         |
| Mathematics | 03    | Students with Disabilities                  | 2009-10     | 100%              | 87.8%                       | 95%                            | 20%                  | 75%                    | 5%                               | 0%                         |
| Mathematics | 03    | Students with Disabilities                  | 2010-11     | 100%              | 88.7%                       | 100%                           | 21.1%                | 78.9%                  | 0%                               | 0%                         |
| Mathematics | 04    | All Students                                | 2009-10     | 100%              | 92.3%                       | 95%                            | 62.6%                | 32.4%                  | 4.5%                             | 0.5%                       |
| Mathematics | 04    | All Students                                | 2010-11     | 100%              | 91.5%                       | 95.1%                          | 65%                  | 30%                    | 4.5%                             | 0.4%                       |
| Mathematics | 04    | American Indian or Alaska Native            | 2009-10     | <10               | 89.5%                       | <10                            | <10                  | <10                    | <10                              | <10                        |
| Mathematics | 04    | American Indian or Alaska Native            | 2010-11     | <10               | 88.8%                       | <10                            | <10                  | <10                    | <10                              | <10                        |
| Mathematics | 04    | Asian, Native Hawaiian, or Pacific Islander | 2009-10     | 100%              | 96.9%                       | 94.4%                          | 63.9%                | 30.6%                  | 5.6%                             | 0%                         |
| Mathematics | 04    | Asian, Native Hawaiian, or Pacific Islander | 2010-11     | 100%              | 96.8%                       | 91.3%                          | 65.2%                | 26.1%                  | 8.7%                             | 0%                         |
| Mathematics | 04    | Black or African American                   | 2009-10     | 100%              | 82.3%                       | 92.3%                          | 56.4%                | 35.9%                  | 7.7%                             | 0%                         |
| Mathematics | 04    | Black or African American                   | 2010-11     | 100%              | 81.2%                       | 86.7%                          | 43.3%                | 43.3%                  | 13.3%                            | 0%                         |
| Mathematics | 04    | Hispanic or Latino                          | 2009-10     | <10               | 89.3%                       | <10                            | <10                  | <10                    | <10                              | <10                        |
| Mathematics | 04    | Hispanic or Latino                          | 2010-11     | 100%              | 88.7%                       | 95.5%                          | 45.5%                | 50%                    | 4.5%                             | 0%                         |
| Mathematics | 04    | Two or More Races                           | 2009-10     | <10               | 91%                         | <10                            | <10                  | <10                    | <10                              | <10                        |
| Mathematics | 04    | Two or More Races                           | 2010-11     | 100%              | 90.9%                       | 100%                           | 68.2%                | 31.8%                  | 0%                               | 0%                         |
| Mathematics | 04    | White                                       | 2009-10     | 100%              | 95.1%                       | 95.6%                          | 64.7%                | 30.9%                  | 3.7%                             | 0.7%                       |
| Mathematics | 04    | White                                       | 2010-11     | 100%              | 94.3%                       | 96.8%                          | 72.8%                | 24%                    | 2.4%                             | 0.8%                       |

### Combined Reports Data for Ingham ISD, East Lansing School District

#### Student Assessment Data - Michigan Educational Assessment Program (MEAP)

| Subject     | Grade | Student Group                               | School Year | % Students Tested | State % Students Proficient | District % Students Proficient | % Advanced (Level 1) | % Proficient (Level 2) | % Partially Proficient (Level 3) | % Not Proficient (Level 4) |
|-------------|-------|---|-------------|-------------------|-----------------------------|--------------------------------|----------------------|------------------------|----------------------------------|----------------------------|
| Mathematics | 04    | Female                                      | 2009-10     | 100%              | 92.9%                       | 96.2%                          | 63.2%                | 33%                    | 3.8%                             | 0%                         |
| Mathematics | 04    | Female                                      | 2010-11     | 100%              | 91.6%                       | 95.9%                          | 62.8%                | 33.1%                  | 4.1%                             | 0%                         |
| Mathematics | 04    | Male  | 2009-10     | 100%              | 91.6%                       | 94%                            | 62.1%                | 31.9%                  | 5.2%                             | 0.9%                       |
| Mathematics | 04    | Male  | 2010-11     | 100%              | 91.3%                       | 94.1%                          | 67.6%                | 26.5%                  | 4.9%                             | 1%                         |
| Mathematics | 04    | Economically Disadvantaged                  | 2009-10     | 100%              | 87.8%                       | 94.3%                          | 50%                  | 44.3%                  | 5.7%                             | 0%                         |
| Mathematics | 04    | Economically Disadvantaged                  | 2010-11     | 100%              | 86.9%                       | 93.8%                          | 46.2%                | 47.7%                  | 4.6%                             | 1.5%                       |
| Mathematics | 04    | Limited English Proficient                  | 2009-10     | 100%              | 86.6%                       | 93.8%                          | 43.8%                | 50%                    | 6.3%                             | 0%                         |
| Mathematics | 04    | Limited English Proficient                  | 2010-11     | 100%              | 84.5%                       | 94.1%                          | 35.3%                | 58.8%                  | 5.9%                             | 0%                         |
| Mathematics | 04    | Students with Disabilities                  | 2009-10     | 100%              | 80%                         | 78.3%                          | 30.4%                | 47.8%                  | 17.4%                            | 4.3%                       |
| Mathematics | 04    | Students with Disabilities                  | 2010-11     | 100%              | 77.5%                       | 83.3%                          | 27.8%                | 55.6%                  | 11.1%                            | 5.6%                       |
| Mathematics | 05    | All Students                                | 2009-10     | 100%              | 79.5%                       | 88.2%                          | 57.1%                | 31.1%                  | 10.2%                            | 1.6%                       |
| Mathematics | 05    | All Students                                | 2010-11     | 100%              | 79.9%                       | 88.8%                          | 60.8%                | 27.9%                  | 9.6%                             | 1.7%                       |
| Mathematics | 05    | American Indian or Alaska Native            | 2009-10     | <10               | 71.7%                       | <10                            | <10                  | <10                    | <10                              | <10                        |
| Mathematics | 05    | American Indian or Alaska Native            | 2010-11     | <10               | 73.8%                       | <10                            | <10                  | <10                    | <10                              | <10                        |
| Mathematics | 05    | Asian, Native Hawaiian, or Pacific Islander | 2009-10     | 100%              | 93%                         | 96.7%                          | 83.3%                | 13.3%                  | 3.3%                             | 0%                         |
| Mathematics | 05    | Asian, Native Hawaiian, or Pacific Islander | 2010-11     | 100%              | 92.3%                       | 90.6%                          | 71.9%                | 18.8%                  | 9.4%                             | 0%                         |
| Mathematics | 05    | Black or African American                   | 2009-10     | 100%              | 62.5%                       | 79.6%                          | 34.7%                | 44.9%                  | 18.4%                            | 2%                         |
| Mathematics | 05    | Black or African American                   | 2010-11     | 100%              | 61.3%                       | 78.4%                          | 40.5%                | 37.8%                  | 18.9%                            | 2.7%                       |
| Mathematics | 05    | Hispanic or Latino                          | 2009-10     | 100%              | 71%                         | 81.3%                          | 50%                  | 31.3%                  | 18.8%                            | 0%                         |
| Mathematics | 05    | Hispanic or Latino                          | 2010-11     | 100%              | 73.5%                       | 70%                            | 30%                  | 40%                    | 30%                              | 0%                         |
| Mathematics | 05    | Two or More Races                           | 2009-10     | <10               | 78.2%                       | <10                            | <10                  | <10                    | <10                              | <10                        |
| Mathematics | 05    | Two or More Races                           | 2010-11     | 100%              | 77.5%                       | 80%                            | 65%                  | 15%                    | 20%                              | 0%                         |
| Mathematics | 05    | White                                       | 2009-10     | 100%              | 84.3%                       | 91.4%                          | 61.6%                | 29.8%                  | 6.6%                             | 2%                         |

### Combined Reports Data for Ingham ISD, East Lansing School District

#### Student Assessment Data - Michigan Educational Assessment Program (MEAP)

| Subject     | Grade | Student Group                               | School Year | % Students Tested | State % Students Proficient | District % Students Proficient | % Advanced (Level 1) | % Proficient (Level 2) | % Partially Proficient (Level 3) | % Not Proficient (Level 4) |
|-------------|-------|---|-------------|-------------------|-----------------------------|--------------------------------|----------------------|------------------------|----------------------------------|----------------------------|
| Mathematics | 05    | White                                       | 2010-11     | 100%              | 85.1%                       | 93.6%                          | 65%                  | 28.6%                  | 4.3%                             | 2.1%                       |
| Mathematics | 05    | Female                                      | 2009-10     | 100%              | 79.6%                       | 90.4%                          | 52.8%                | 37.6%                  | 8.8%                             | 0.8%                       |
| Mathematics | 05    | Female                                      | 2010-11     | 100%              | 80.1%                       | 89.5%                          | 57%                  | 32.5%                  | 9.6%                             | 0.9%                       |
| Mathematics | 05    | Male  | 2009-10     | 100%              | 79.4%                       | 86%                            | 61.2%                | 24.8%                  | 11.6%                            | 2.3%                       |
| Mathematics | 05    | Male  | 2010-11     | 100%              | 79.7%                       | 88.1%                          | 64.3%                | 23.8%                  | 9.5%                             | 2.4%                       |
| Mathematics | 05    | Economically Disadvantaged                  | 2009-10     | 100%              | 69.8%                       | 74.7%                          | 32.5%                | 42.2%                  | 22.9%                            | 2.4%                       |
| Mathematics | 05    | Economically Disadvantaged                  | 2010-11     | 100%              | 70.2%                       | 80.5%                          | 46.8%                | 33.8%                  | 14.3%                            | 5.2%                       |
| Mathematics | 05    | Limited English Proficient                  | 2009-10     | 100%              | 67.6%                       | 94.1%                          | 58.8%                | 35.3%                  | 5.9%                             | 0%                         |
| Mathematics | 05    | Limited English Proficient                  | 2010-11     | 100%              | 64.7%                       | 84.6%                          | 61.5%                | 23.1%                  | 7.7%                             | 7.7%                       |
| Mathematics | 05    | Students with Disabilities                  | 2009-10     | 100%              | 52.8%                       | 52%                            | 20%                  | 32%                    | 36%                              | 12%                        |
| Mathematics | 05    | Students with Disabilities                  | 2010-11     | 100%              | 50.2%                       | 72.7%                          | 36.4%                | 36.4%                  | 18.2%                            | 9.1%                       |
| Mathematics | 06    | All Students                                | 2009-10     | 100%              | 82%                         | 88.9%                          | 55.1%                | 33.8%                  | 9.4%                             | 1.7%                       |
| Mathematics | 06    | All Students                                | 2010-11     | 100%              | 84.5%                       | 94.9%                          | 65.6%                | 29.2%                  | 5.1%                             | 0%                         |
| Mathematics | 06    | American Indian or Alaska Native            | 2009-10     | <10               | 78.2%                       | <10                            | <10                  | <10                    | <10                              | <10                        |
| Mathematics | 06    | American Indian or Alaska Native            | 2010-11     | <10               | 80.9%                       | <10                            | <10                  | <10                    | <10                              | <10                        |
| Mathematics | 06    | Asian, Native Hawaiian, or Pacific Islander | 2009-10     | 100%              | 93.8%                       | 100%                           | 70%                  | 30%                    | 0%                               | 0%                         |
| Mathematics | 06    | Asian, Native Hawaiian, or Pacific Islander | 2010-11     | 100%              | 94.9%                       | 95%                            | 70%                  | 25%                    | 5%                               | 0%                         |
| Mathematics | 06    | Black or African American                   | 2009-10     | 100%              | 62.3%                       | 80.4%                          | 39.2%                | 41.2%                  | 17.6%                            | 2%                         |
| Mathematics | 06    | Black or African American                   | 2010-11     | 100%              | 68.9%                       | 90.7%                          | 39.5%                | 51.2%                  | 9.3%                             | 0%                         |
| Mathematics | 06    | Hispanic or Latino                          | 2009-10     | 100%              | 75.6%                       | 76.5%                          | 35.3%                | 41.2%                  | 23.5%                            | 0%                         |
| Mathematics | 06    | Hispanic or Latino                          | 2010-11     | 100%              | 79%                         | 95.5%                          | 68.2%                | 27.3%                  | 4.5%                             | 0%                         |
| Mathematics | 06    | Two or More Races                           | 2009-10     | <10               | 80%                         | <10                            | <10                  | <10                    | <10                              | <10                        |
| Mathematics | 06    | Two or More Races                           | 2010-11     | 100%              | 82.9%                       | 93.3%                          | 46.7%                | 46.7%                  | 6.7%                             | 0%                         |

### Combined Reports Data for Ingham ISD, East Lansing School District

#### Student Assessment Data - Michigan Educational Assessment Program (MEAP)

| Subject     | Grade | Student Group                               | School Year | % Students Tested | State % Students Proficient | District % Students Proficient | % Advanced (Level 1) | % Proficient (Level 2) | % Partially Proficient (Level 3) | % Not Proficient (Level 4) |
|-------------|-------|---|-------------|-------------------|-----------------------------|--------------------------------|----------------------|------------------------|----------------------------------|----------------------------|
| Mathematics | 06    | White                                       | 2009-10     | 100%              | 87.5%                       | 92.2%                          | 61%                  | 31.2%                  | 6.4%                             | 1.4%                       |
| Mathematics | 06    | White                                       | 2010-11     | 100%              | 88.8%                       | 96%                            | 74%                  | 22%                    | 4%                               | 0%                         |
| Mathematics | 06    | Female                                      | 2009-10     | 100%              | 83%                         | 89.7%                          | 60.3%                | 29.3%                  | 9.5%                             | 0.9%                       |
| Mathematics | 06    | Female                                      | 2010-11     | 100%              | 86.2%                       | 97.6%                          | 64.8%                | 32.8%                  | 2.4%                             | 0%                         |
| Mathematics | 06    | Male  | 2009-10     | 100%              | 81.1%                       | 88.1%                          | 50%                  | 38.1%                  | 9.3%                             | 2.5%                       |
| Mathematics | 06    | Male  | 2010-11     | 100%              | 82.9%                       | 92.2%                          | 66.4%                | 25.8%                  | 7.8%                             | 0%                         |
| Mathematics | 06    | Economically Disadvantaged                  | 2009-10     | 100%              | 72.5%                       | 84.7%                          | 38.9%                | 45.8%                  | 11.1%                            | 4.2%                       |
| Mathematics | 06    | Economically Disadvantaged                  | 2010-11     | 100%              | 76.5%                       | 86.6%                          | 44.8%                | 41.8%                  | 13.4%                            | 0%                         |
| Mathematics | 06    | Limited English Proficient                  | 2009-10     | 100%              | 68.7%                       | 86.7%                          | 33.3%                | 53.3%                  | 13.3%                            | 0%                         |
| Mathematics | 06    | Limited English Proficient                  | 2010-11     | <10               | 67.9%                       | <10                            | <10                  | <10                    | <10                              | <10                        |
| Mathematics | 06    | Students with Disabilities                  | 2009-10     | 100%              | 52.3%                       | 66.7%                          | 9.5%                 | 57.1%                  | 23.8%                            | 9.5%                       |
| Mathematics | 06    | Students with Disabilities                  | 2010-11     | 100%              | 54.1%                       | 70%                            | 25%                  | 45%                    | 30%                              | 0%                         |
| Mathematics | 07    | All Students                                | 2009-10     | 99.6%             | 82.2%                       | 87.2%                          | 64.7%                | 22.5%                  | 12%                              | 0.8%                       |
| Mathematics | 07    | All Students                                | 2010-11     | 99.6%             | 84.6%                       | 91.7%                          | 63.9%                | 27.8%                  | 7.9%                             | 0.4%                       |
| Mathematics | 07    | American Indian or Alaska Native            | 2009-10     | <10               | 78.5%                       | <10                            | <10                  | <10                    | <10                              | <10                        |
| Mathematics | 07    | American Indian or Alaska Native            | 2010-11     | <10               | 81.6%                       | <10                            | <10                  | <10                    | <10                              | <10                        |
| Mathematics | 07    | Asian, Native Hawaiian, or Pacific Islander | 2009-10     | 100%              | 93.2%                       | 96.4%                          | 85.7%                | 10.7%                  | 3.6%                             | 0%                         |
| Mathematics | 07    | Asian, Native Hawaiian, or Pacific Islander | 2010-11     | 100%              | 93.4%                       | 93.3%                          | 66.7%                | 26.7%                  | 0%                               | 6.7%                       |
| Mathematics | 07    | Black or African American                   | 2009-10     | 100%              | 62.6%                       | 78.7%                          | 39.3%                | 39.3%                  | 19.7%                            | 1.6%                       |
| Mathematics | 07    | Black or African American                   | 2010-11     | 100%              | 68.2%                       | 88.2%                          | 51%                  | 37.3%                  | 11.8%                            | 0%                         |
| Mathematics | 07    | Hispanic or Latino                          | 2009-10     | 100%              | 75.3%                       | 63.2%                          | 52.6%                | 10.5%                  | 31.6%                            | 5.3%                       |
| Mathematics | 07    | Hispanic or Latino                          | 2010-11     | 100%              | 79.4%                       | 85.2%                          | 44.4%                | 40.7%                  | 14.8%                            | 0%                         |
| Mathematics | 07    | Two or More Races                           | 2009-10     | <10               | 77%                         | <10                            | <10                  | <10                    | <10                              | <10                        |



### Combined Reports Data for Ingham ISD, East Lansing School District

#### Student Assessment Data - Michigan Educational Assessment Program (MEAP)

| Subject     | Grade | Student Group                               | School Year | % Students Tested | State % Students Proficient | District % Students Proficient | % Advanced (Level 1) | % Proficient (Level 2) | % Partially Proficient (Level 3) | % Not Proficient (Level 4) |
|-------------|-------|---|-------------|-------------------|-----------------------------|--------------------------------|----------------------|------------------------|----------------------------------|----------------------------|
| Mathematics | 07    | Two or More Races                           | 2010-11     | 100%              | 83.2%                       | 81.3%                          | 37.5%                | 43.8%                  | 18.8%                            | 0%                         |
| Mathematics | 07    | White                                       | 2009-10     | 99.3%             | 87.6%                       | 92.5%                          | 74%                  | 18.5%                  | 7.5%                             | 0%                         |
| Mathematics | 07    | White                                       | 2010-11     | 99.3%             | 89.1%                       | 95.1%                          | 74.6%                | 20.4%                  | 4.9%                             | 0%                         |
| Mathematics | 07    | Female                                      | 2009-10     | 99.2%             | 82.6%                       | 82.3%                          | 61.3%                | 21%                    | 17.7%                            | 0%                         |
| Mathematics | 07    | Female                                      | 2010-11     | 100%              | 86.3%                       | 93.8%                          | 65.9%                | 27.9%                  | 6.2%                             | 0%                         |
| Mathematics | 07    | Male  | 2009-10     | 100%              | 81.7%                       | 91.8%                          | 67.9%                | 23.9%                  | 6.7%                             | 1.5%                       |
| Mathematics | 07    | Male  | 2010-11     | 99.2%             | 82.9%                       | 89.4%                          | 61.8%                | 27.6%                  | 9.8%                             | 0.8%                       |
| Mathematics | 07    | Economically Disadvantaged                  | 2009-10     | 98.9%             | 72.4%                       | 73.9%                          | 44.3%                | 29.5%                  | 23.9%                            | 2.3%                       |
| Mathematics | 07    | Economically Disadvantaged                  | 2010-11     | 100%              | 76.4%                       | 89.6%                          | 50.7%                | 38.8%                  | 10.4%                            | 0%                         |
| Mathematics | 07    | Limited English Proficient                  | 2009-10     | 92.9%             | 66%                         | 100%                           | 84.6%                | 15.4%                  | 0%                               | 0%                         |
| Mathematics | 07    | Limited English Proficient                  | 2010-11     | 100%              | 66.7%                       | 90.9%                          | 54.5%                | 36.4%                  | 0%                               | 9.1%                       |
| Mathematics | 07    | Students with Disabilities                  | 2009-10     | 100%              | 51.2%                       | 55.6%                          | 18.5%                | 37%                    | 37%                              | 7.4%                       |
| Mathematics | 07    | Students with Disabilities                  | 2010-11     | 95.5%             | 51.4%                       | 66.7%                          | 19%                  | 47.6%                  | 33.3%                            | 0%                         |
| Mathematics | 08    | All Students                                | 2009-10     | 100%              | 70.3%                       | 80.8%                          | 61.7%                | 19.2%                  | 12.3%                            | 6.9%                       |
| Mathematics | 08    | All Students                                | 2010-11     | 100%              | 78%                         | 84.3%                          | 55.9%                | 28.4%                  | 11.9%                            | 3.8%                       |
| Mathematics | 08    | American Indian or Alaska Native            | 2009-10     | <10               | 63%                         | <10                            | <10                  | <10                    | <10                              | <10                        |
| Mathematics | 08    | Asian, Native Hawaiian, or Pacific Islander | 2009-10     | 100%              | 88.7%                       | 85.3%                          | 76.5%                | 8.8%                   | 14.7%                            | 0%                         |
| Mathematics | 08    | Asian, Native Hawaiian, or Pacific Islander | 2010-11     | 100%              | 90.8%                       | 100%                           | 81%                  | 19%                    | 0%                               | 0%                         |
| Mathematics | 08    | Black or African American                   | 2009-10     | 100%              | 44.7%                       | 67.3%                          | 42.9%                | 24.5%                  | 24.5%                            | 8.2%                       |
| Mathematics | 08    | Black or African American                   | 2010-11     | 100%              | 56.6%                       | 73.6%                          | 34%                  | 39.6%                  | 20.8%                            | 5.7%                       |
| Mathematics | 08    | Hispanic or Latino                          | 2009-10     | 100%              | 59.1%                       | 66.7%                          | 44.4%                | 22.2%                  | 11.1%                            | 22.2%                      |
| Mathematics | 08    | Hispanic or Latino                          | 2010-11     | 100%              | 69.8%                       | 66.7%                          | 25%                  | 41.7%                  | 29.2%                            | 4.2%                       |
| Mathematics | 08    | Two or More Races                           | 2009-10     | <10               | 64.2%                       | <10                            | <10                  | <10                    | <10                              | <10                        |

### Combined Reports Data for Ingham ISD, East Lansing School District

#### Student Assessment Data - Michigan Educational Assessment Program (MEAP)

| Subject     | Grade | Student Group                               | School Year | % Students Tested | State % Students Proficient | District % Students Proficient | % Advanced (Level 1) | % Proficient (Level 2) | % Partially Proficient (Level 3) | % Not Proficient (Level 4) |
|-------------|-------|---|-------------|-------------------|-----------------------------|--------------------------------|----------------------|------------------------|----------------------------------|----------------------------|
| Mathematics | 08    | Two or More Races                           | 2010-11     | 100%              | 76.8%                       | 87.5%                          | 56.3%                | 31.3%                  | 6.3%                             | 6.3%                       |
| Mathematics | 08    | White                                       | 2009-10     | 100%              | 77.1%                       | 85.7%                          | 67.5%                | 18.2%                  | 8.4%                             | 5.8%                       |
| Mathematics | 08    | White                                       | 2010-11     | 100%              | 83.6%                       | 88.4%                          | 65.3%                | 23.1%                  | 8.2%                             | 3.4%                       |
| Mathematics | 08    | Female                                      | 2009-10     | 100%              | 70.6%                       | 78%                            | 58.9%                | 19.1%                  | 14.2%                            | 7.8%                       |
| Mathematics | 08    | Female                                      | 2010-11     | 100%              | 78.1%                       | 80.6%                          | 51.2%                | 29.5%                  | 15.5%                            | 3.9%                       |
| Mathematics | 08    | Male  | 2009-10     | 100%              | 70%                         | 84.2%                          | 65%                  | 19.2%                  | 10%                              | 5.8%                       |
| Mathematics | 08    | Male  | 2010-11     | 100%              | 77.8%                       | 87.9%                          | 60.6%                | 27.3%                  | 8.3%                             | 3.8%                       |
| Mathematics | 08    | Economically Disadvantaged                  | 2009-10     | 100%              | 56.3%                       | 63.7%                          | 43.8%                | 20%                    | 23.8%                            | 12.5%                      |
| Mathematics | 08    | Economically Disadvantaged                  | 2010-11     | 100%              | 66.9%                       | 69.4%                          | 27.8%                | 41.7%                  | 23.6%                            | 6.9%                       |
| Mathematics | 08    | Limited English Proficient                  | 2009-10     | 100%              | 50.2%                       | 64.7%                          | 47.1%                | 17.6%                  | 29.4%                            | 5.9%                       |
| Mathematics | 08    | Limited English Proficient                  | 2010-11     | 100%              | 56.3%                       | 100%                           | 40%                  | 60%                    | 0%                               | 0%                         |
| Mathematics | 08    | Students with Disabilities                  | 2009-10     | 100%              | 31.6%                       | 38.1%                          | 9.5%                 | 28.6%                  | 33.3%                            | 28.6%                      |
| Mathematics | 08    | Students with Disabilities                  | 2010-11     | 100%              | 43.5%                       | 52.4%                          | 14.3%                | 38.1%                  | 19%                              | 28.6%                      |
| Science     | 05    | All Students                                | 2009-10     | 100%              | 81%                         | 87%                            | 46.9%                | 40.2%                  | 9.8%                             | 3.1%                       |
| Science     | 05    | All Students                                | 2010-11     | 100%              | 78.1%                       | 80.8%                          | 45.4%                | 35.4%                  | 15.4%                            | 3.8%                       |
| Science     | 05    | American Indian or Alaska Native            | 2009-10     | <10               | 77.2%                       | <10                            | <10                  | <10                    | <10                              | <10                        |
| Science     | 05    | American Indian or Alaska Native            | 2010-11     | <10               | 74.6%                       | <10                            | <10                  | <10                    | <10                              | <10                        |
| Science     | 05    | Asian, Native Hawaiian, or Pacific Islander | 2009-10     | 100%              | 88.8%                       | 86.7%                          | 46.7%                | 40%                    | 10%                              | 3.3%                       |
| Science     | 05    | Asian, Native Hawaiian, or Pacific Islander | 2010-11     | 100%              | 87.4%                       | 62.5%                          | 34.4%                | 28.1%                  | 25%                              | 12.5%                      |
| Science     | 05    | Black or African American                   | 2009-10     | 100%              | 59.6%                       | 75.5%                          | 26.5%                | 49%                    | 16.3%                            | 8.2%                       |
| Science     | 05    | Black or African American                   | 2010-11     | 100%              | 52.8%                       | 67.6%                          | 24.3%                | 43.2%                  | 27%                              | 5.4%                       |
| Science     | 05    | Hispanic or Latino                          | 2009-10     | 100%              | 68.8%                       | 75%                            | 18.8%                | 56.3%                  | 25%                              | 0%                         |
| Science     | 05    | Hispanic or Latino                          | 2010-11     | 100%              | 67.8%                       | 100%                           | 20%                  | 80%                    | 0%                               | 0%                         |

### Combined Reports Data for Ingham ISD, East Lansing School District

#### Student Assessment Data - Michigan Educational Assessment Program (MEAP)

| Subject | Grade | Student Group                               | School Year | % Students Tested | State % Students Proficient | District % Students Proficient | % Advanced (Level 1) | % Proficient (Level 2) | % Partially Proficient (Level 3) | % Not Proficient (Level 4) |
|---------|-------|---|-------------|-------------------|-----------------------------|--------------------------------|----------------------|------------------------|----------------------------------|----------------------------|
| Science | 05    | Two or More Races                           | 2009-10     | <10               | 79.3%                       | <10                            | <10                  | <10                    | <10                              | <10                        |
| Science | 05    | Two or More Races                           | 2010-11     | 100%              | 77.3%                       | 85%                            | 60%                  | 25%                    | 10%                              | 5%                         |
| Science | 05    | White                                       | 2009-10     | 100%              | 87.5%                       | 92.7%                          | 57.6%                | 35.1%                  | 5.3%                             | 2%                         |
| Science | 05    | White                                       | 2010-11     | 100%              | 85.5%                       | 86.4%                          | 53.6%                | 32.9%                  | 12.1%                            | 1.4%                       |
| Science | 05    | Female                                      | 2009-10     | 100%              | 81.1%                       | 89.6%                          | 44%                  | 45.6%                  | 8%                               | 2.4%                       |
| Science | 05    | Female                                      | 2010-11     | 100%              | 78.6%                       | 78.1%                          | 43.9%                | 34.2%                  | 19.3%                            | 2.6%                       |
| Science | 05    | Male  | 2009-10     | 100%              | 80.8%                       | 84.5%                          | 49.6%                | 34.9%                  | 11.6%                            | 3.9%                       |
| Science | 05    | Male  | 2010-11     | 100%              | 77.5%                       | 83.3%                          | 46.8%                | 36.5%                  | 11.9%                            | 4.8%                       |
| Science | 05    | Economically Disadvantaged                  | 2009-10     | 100%              | 70.6%                       | 77.1%                          | 19.3%                | 57.8%                  | 16.9%                            | 6%                         |
| Science | 05    | Economically Disadvantaged                  | 2010-11     | 100%              | 66.6%                       | 74%                            | 27.3%                | 46.8%                  | 18.2%                            | 7.8%                       |
| Science | 05    | Limited English Proficient                  | 2009-10     | 100%              | 56.7%                       | 70.6%                          | 17.6%                | 52.9%                  | 23.5%                            | 5.9%                       |
| Science | 05    | Limited English Proficient                  | 2010-11     | 100%              | 49%                         | 30.8%                          | 0%                   | 30.8%                  | 30.8%                            | 38.5%                      |
| Science | 05    | Students with Disabilities                  | 2009-10     | 100%              | 60.7%                       | 48%                            | 8%                   | 40%                    | 28%                              | 24%                        |
| Science | 05    | Students with Disabilities                  | 2010-11     | 100%              | 54.1%                       | 59.1%                          | 18.2%                | 40.9%                  | 40.9%                            | 0%                         |
| Science | 08    | All Students                                | 2009-10     | 100%              | 75.9%                       | 84.3%                          | 39.5%                | 44.8%                  | 13.4%                            | 2.3%                       |
| Science | 08    | All Students                                | 2010-11     | 100%              | 78.1%                       | 82.7%                          | 42.7%                | 40%                    | 14.2%                            | 3.1%                       |
| Science | 08    | American Indian or Alaska Native            | 2009-10     | <10               | 70.4%                       | <10                            | <10                  | <10                    | <10                              | <10                        |
| Science | 08    | Asian, Native Hawaiian, or Pacific Islander | 2009-10     | 100%              | 86.9%                       | 88.2%                          | 41.2%                | 47.1%                  | 11.8%                            | 0%                         |
| Science | 08    | Asian, Native Hawaiian, or Pacific Islander | 2010-11     | 100%              | 87.9%                       | 90.5%                          | 52.4%                | 38.1%                  | 4.8%                             | 4.8%                       |
| Science | 08    | Black or African American                   | 2009-10     | 100%              | 50%                         | 69.4%                          | 18.4%                | 51%                    | 24.5%                            | 6.1%                       |
| Science | 08    | Black or African American                   | 2010-11     | 100%              | 56.4%                       | 71.7%                          | 24.5%                | 47.2%                  | 24.5%                            | 3.8%                       |
| Science | 08    | Hispanic or Latino                          | 2009-10     | 100%              | 65%                         | 83.3%                          | 27.8%                | 55.6%                  | 5.6%                             | 11.1%                      |
| Science | 08    | Hispanic or Latino                          | 2010-11     | 100%              | 68.6%                       | 75%                            | 29.2%                | 45.8%                  | 25%                              | 0%                         |

### Combined Reports Data for Ingham ISD, East Lansing School District

#### Student Assessment Data - Michigan Educational Assessment Program (MEAP)

| Subject | Grade | Student Group              | School Year | % Students Tested | State % Students Proficient | District % Students Proficient | % Advanced (Level 1) | % Proficient (Level 2) | % Partially Proficient (Level 3) | % Not Proficient (Level 4) |
|---------|-------|----------------------------|-------------|-------------------|-----------------------------|--------------------------------|----------------------|------------------------|----------------------------------|----------------------------|
| Science | 08    | Two or More Races          | 2009-10     | <10               | 69.6%                       | <10                            | <10                  | <10                    | <10                              | <10                        |
| Science | 08    | Two or More Races          | 2010-11     | 100%              | 77.6%                       | 81.3%                          | 43.8%                | 37.5%                  | 12.5%                            | 6.3%                       |
| Science | 08    | White                      | 2009-10     | 100%              | 83.1%                       | 89%                            | 48.1%                | 40.9%                  | 10.4%                            | 0.6%                       |
| Science | 08    | White                      | 2010-11     | 100%              | 84.1%                       | 87%                            | 50%                  | 37%                    | 10.3%                            | 2.7%                       |
| Science | 08    | Female                     | 2009-10     | 100%              | 77%                         | 86.5%                          | 36.9%                | 49.6%                  | 11.3%                            | 2.1%                       |
| Science | 08    | Female                     | 2010-11     | 100%              | 79.4%                       | 83.7%                          | 34.1%                | 49.6%                  | 12.4%                            | 3.9%                       |
| Science | 08    | Male                       | 2009-10     | 100%              | 74.9%                       | 81.7%                          | 42.5%                | 39.2%                  | 15.8%                            | 2.5%                       |
| Science | 08    | Male                       | 2010-11     | 100%              | 76.9%                       | 81.7%                          | 51.1%                | 30.5%                  | 16%                              | 2.3%                       |
| Science | 08    | Economically Disadvantaged | 2009-10     | 100%              | 63.1%                       | 66.3%                          | 22.5%                | 43.8%                  | 28.7%                            | 5%                         |
| Science | 08    | Economically Disadvantaged | 2010-11     | 100%              | 66.7%                       | 62.5%                          | 19.4%                | 43.1%                  | 29.2%                            | 8.3%                       |
| Science | 08    | Limited English Proficient | 2009-10     | 100%              | 48.3%                       | 58.8%                          | 0%                   | 58.8%                  | 35.3%                            | 5.9%                       |
| Science | 08    | Limited English Proficient | 2010-11     | 100%              | 48.2%                       | 90%                            | 20%                  | 70%                    | 0%                               | 10%                        |
| Science | 08    | Students with Disabilities | 2009-10     | 100%              | 42.3%                       | 42.9%                          | 19%                  | 23.8%                  | 38.1%                            | 19%                        |
| Science | 08    | Students with Disabilities | 2010-11     | 100%              | 44.3%                       | 45%                            | 15%                  | 30%                    | 30%                              | 25%                        |

### Combined Reports Data for Ingham ISD, East Lansing School District

#### Student Assessment Data - Michigan Merit Examination (MME)

| Subject                         | Grade | Student Group                               | School Year | % Students Tested | State % Students Proficient | District % Students Proficient | % Advanced (Level 1) | % Proficient (Level 2) | % Partially Proficient (Level 3) | % Not Proficient (Level 4) |
|---------------------------------|-------|---|-------------|-------------------|-----------------------------|--------------------------------|----------------------|------------------------|----------------------------------|----------------------------|
| English Language Arts / Reading | 11    | All Students                                | 2009-10     | 98.9%             | 65.2%                       | 78.5%                          | 6.5%                 | 71.9%                  | 11.9%                            | 9.6%                       |
| English Language Arts / Reading | 11    | All Students                                | 2010-11     | 98%               | 63.4%                       | 81.5%                          | 10.8%                | 70.7%                  | 12%                              | 6.4%                       |
| English Language Arts / Reading | 11    | American Indian or Alaska Native            | 2009-10     | <10               | 59.1%                       | <10                            | <10                  | <10                    | <10                              | <10                        |
| English Language Arts / Reading | 11    | American Indian or Alaska Native            | 2010-11     | <10               | 58.2%                       | <10                            | <10                  | <10                    | <10                              | <10                        |
| English Language Arts / Reading | 11    | Asian, Native Hawaiian, or Pacific Islander | 2009-10     | 100%              | 74.9%                       | 81.3%                          | 0%                   | 81.3%                  | 6.3%                             | 12.5%                      |
| English Language Arts / Reading | 11    | Asian, Native Hawaiian, or Pacific Islander | 2010-11     | 95.7%             | 72.5%                       | 86.4%                          | 13.6%                | 72.7%                  | 4.5%                             | 9.1%                       |
| English Language Arts / Reading | 11    | Black or African American                   | 2009-10     | 96.5%             | 37.5%                       | 52.7%                          | 0%                   | 52.7%                  | 30.9%                            | 16.4%                      |
| English Language Arts / Reading | 11    | Black or African American                   | 2010-11     | 98%               | 34.8%                       | 70%                            | 10%                  | 60%                    | 24%                              | 6%                         |
| English Language Arts / Reading | 11    | Hispanic or Latino                          | 2009-10     | 100%              | 50.7%                       | 85.7%                          | 14.3%                | 71.4%                  | 0%                               | 14.3%                      |
| English Language Arts / Reading | 11    | Hispanic or Latino                          | 2010-11     | 89.5%             | 49.6%                       | 70.6%                          | 5.9%                 | 64.7%                  | 5.9%                             | 23.5%                      |
| English Language Arts / Reading | 11    | Two or More Races                           | 2010-11     | <10               | 62.7%                       | <10                            | <10                  | <10                    | <10                              | <10                        |
| English Language Arts / Reading | 11    | White                                       | 2009-10     | 99.4%             | 71.5%                       | 86.5%                          | 8.2%                 | 78.4%                  | 7.6%                             | 5.8%                       |
| English Language Arts / Reading | 11    | White                                       | 2010-11     | 99.3%             | 70.1%                       | 86.1%                          | 11.9%                | 74.2%                  | 9.9%                             | 4%                         |
| English Language Arts / Reading | 11    | Female                                      | 2009-10     | 98.4%             | 68%                         | 84.9%                          | 9.5%                 | 75.4%                  | 8.7%                             | 6.3%                       |
| English Language Arts / Reading | 11    | Female                                      | 2010-11     | 99.2%             | 66%                         | 79.5%                          | 10.3%                | 69.2%                  | 14.5%                            | 6%                         |
| English Language Arts / Reading | 11    | Male  | 2009-10     | 99.3%             | 62.3%                       | 72.4%                          | 3.7%                 | 68.7%                  | 14.9%                            | 12.7%                      |
| English Language Arts / Reading | 11    | Male  | 2010-11     | 97.1%             | 60.8%                       | 83.3%                          | 11.4%                | 72%                    | 9.8%                             | 6.8%                       |
| English Language Arts / Reading | 11    | Economically Disadvantaged                  | 2009-10     | 98.8%             | 48.5%                       | 61.3%                          | 1.3%                 | 60%                    | 18.8%                            | 20%                        |
| English Language Arts / Reading | 11    | Economically Disadvantaged                  | 2010-11     | 92.3%             | 46.6%                       | 66.7%                          | 6.3%                 | 60.4%                  | 20.8%                            | 12.5%                      |

### Combined Reports Data for Ingham ISD, East Lansing School District

#### Student Assessment Data - Michigan Merit Examination (MME)

| Subject                         | Grade | Student Group                               | School Year | % Students Tested | State % Students Proficient | District % Students Proficient | % Advanced (Level 1) | % Proficient (Level 2) | % Partially Proficient (Level 3) | % Not Proficient (Level 4) |
|---------------------------------|-------|---|-------------|-------------------|-----------------------------|--------------------------------|----------------------|------------------------|----------------------------------|----------------------------|
| English Language Arts / Reading | 11    | Limited English Proficient                  | 2009-10     | <10               | 22.2%                       | <10                            | <10                  | <10                    | <10                              | <10                        |
| English Language Arts / Reading | 11    | Limited English Proficient                  | 2010-11     | <10               | 22.1%                       | <10                            | <10                  | <10                    | <10                              | <10                        |
| English Language Arts / Reading | 11    | Students with Disabilities                  | 2009-10     | 95.8%             | 23.6%                       | 34.8%                          | 0%                   | 34.8%                  | 21.7%                            | 43.5%                      |
| English Language Arts / Reading | 11    | Students with Disabilities                  | 2010-11     | 93.3%             | 24.1%                       | 28.6%                          | 0%                   | 28.6%                  | 35.7%                            | 35.7%                      |
| Mathematics                     | 11    | All Students                                | 2009-10     | 98.5%             | 50.4%                       | 66%                            | 24.3%                | 41.7%                  | 12%                              | 22%                        |
| Mathematics                     | 11    | All Students                                | 2010-11     | 98%               | 52%                         | 70.3%                          | 28.1%                | 42.2%                  | 10.4%                            | 19.3%                      |
| Mathematics                     | 11    | American Indian or Alaska Native            | 2009-10     | <10               | 38.8%                       | <10                            | <10                  | <10                    | <10                              | <10                        |
| Mathematics                     | 11    | American Indian or Alaska Native            | 2010-11     | <10               | 42%                         | <10                            | <10                  | <10                    | <10                              | <10                        |
| Mathematics                     | 11    | Asian, Native Hawaiian, or Pacific Islander | 2009-10     | 100%              | 72.1%                       | 81.3%                          | 37.5%                | 43.8%                  | 6.3%                             | 12.5%                      |
| Mathematics                     | 11    | Asian, Native Hawaiian, or Pacific Islander | 2010-11     | 95.7%             | 75.2%                       | 90.9%                          | 54.5%                | 36.4%                  | 4.5%                             | 4.5%                       |
| Mathematics                     | 11    | Black or African American                   | 2009-10     | 96.5%             | 16.4%                       | 32.7%                          | 3.6%                 | 29.1%                  | 16.4%                            | 50.9%                      |
| Mathematics                     | 11    | Black or African American                   | 2010-11     | 98%               | 19%                         | 52%                            | 18%                  | 34%                    | 12%                              | 36%                        |
| Mathematics                     | 11    | Hispanic or Latino                          | 2009-10     | 92.9%             | 33.8%                       | 53.8%                          | 15.4%                | 38.5%                  | 23.1%                            | 23.1%                      |
| Mathematics                     | 11    | Hispanic or Latino                          | 2010-11     | 89.5%             | 35.7%                       | 47.1%                          | 17.6%                | 29.4%                  | 17.6%                            | 35.3%                      |
| Mathematics                     | 11    | Two or More Races                           | 2010-11     | <10               | 47.4%                       | <10                            | <10                  | <10                    | <10                              | <10                        |
| Mathematics                     | 11    | White                                       | 2009-10     | 99.4%             | 57.9%                       | 76.6%                          | 29.8%                | 46.8%                  | 10.5%                            | 12.9%                      |
| Mathematics                     | 11    | White                                       | 2010-11     | 99.3%             | 59.3%                       | 77.5%                          | 28.5%                | 49%                    | 9.3%                             | 13.2%                      |
| Mathematics                     | 11    | Female                                      | 2009-10     | 98.4%             | 48.3%                       | 67.5%                          | 23.8%                | 43.7%                  | 11.9%                            | 20.6%                      |
| Mathematics                     | 11    | Female                                      | 2010-11     | 99.2%             | 50.9%                       | 60.7%                          | 21.4%                | 39.3%                  | 12.8%                            | 26.5%                      |
| Mathematics                     | 11    | Male  | 2009-10     | 98.5%             | 52.5%                       | 64.7%                          | 24.8%                | 39.8%                  | 12%                              | 23.3%                      |
| Mathematics                     | 11    | Male  | 2010-11     | 97.1%             | 53.1%                       | 78.8%                          | 34.1%                | 44.7%                  | 8.3%                             | 12.9%                      |
| Mathematics                     | 11    | Economically Disadvantaged                  | 2009-10     | 97.5%             | 30.4%                       | 39.2%                          | 5.1%                 | 34.2%                  | 19%                              | 41.8%                      |
| Mathematics                     | 11    | Economically Disadvantaged                  | 2010-11     | 92.3%             | 32.3%                       | 43.8%                          | 20.8%                | 22.9%                  | 8.3%                             | 47.9%                      |

### Combined Reports Data for Ingham ISD, East Lansing School District

#### Student Assessment Data - Michigan Merit Examination (MME)

| Subject     | Grade | Student Group              | School Year | % Students Tested | State % Students Proficient | District % Students Proficient | % Advanced (Level 1) | % Proficient (Level 2) | % Partially Proficient (Level 3) | % Not Proficient (Level 4) |
|-------------|-------|----------------------------|-------------|-------------------|-----------------------------|--------------------------------|----------------------|------------------------|----------------------------------|----------------------------|
| Mathematics | 11    | Limited English Proficient | 2009-10     | <10               | 17.3%                       | <10                            | <10                  | <10                    | <10                              | <10                        |
| Mathematics | 11    | Limited English Proficient | 2010-11     | <10               | 21.9%                       | <10                            | <10                  | <10                    | <10                              | <10                        |
| Mathematics | 11    | Students with Disabilities | 2009-10     | 91.7%             | 11.2%                       | 13.6%                          | 4.5%                 | 9.1%                   | 9.1%                             | 77.3%                      |
| Mathematics | 11    | Students with Disabilities | 2010-11     | 93.3%             | 11.4%                       | 14.3%                          | 0%                   | 14.3%                  | 28.6%                            | 57.1%                      |

### Combined Reports Data for Ingham ISD, East Lansing School District

#### Student Assessment Data - MI-Access : Functional Independence

| Subject     | Grade | Student Group                               | School Year | % Students Tested | State % Students Proficient | District % Students Proficient | % Surpassed (Level 1) | % Attained (Level 2) | % Emerging (Level 3) |
|-------------|-------|---|-------------|-------------------|-----------------------------|--------------------------------|-----------------------|----------------------|----------------------|
| Mathematics | 03    | All Students                                | 2009-10     | <10               | 76.4%                       | <10                            | <10                   | <10                  | <10                  |
| Mathematics | 03    | All Students                                | 2010-11     | <10               | 74.7%                       | <10                            | <10                   | <10                  | <10                  |
| Mathematics | 03    | White                                       | 2009-10     | <10               | 79.3%                       | <10                            | <10                   | <10                  | <10                  |
| Mathematics | 03    | White                                       | 2010-11     | <10               | 77.1%                       | <10                            | <10                   | <10                  | <10                  |
| Mathematics | 03    | Male  | 2009-10     | <10               | 78.9%                       | <10                            | <10                   | <10                  | <10                  |
| Mathematics | 03    | Male  | 2010-11     | <10               | 75.3%                       | <10                            | <10                   | <10                  | <10                  |
| Mathematics | 04    | All Students                                | 2009-10     | <10               | 85%                         | <10                            | <10                   | <10                  | <10                  |
| Mathematics | 04    | All Students                                | 2010-11     | <10               | 82.9%                       | <10                            | <10                   | <10                  | <10                  |
| Mathematics | 04    | White                                       | 2009-10     | <10               | 88.4%                       | <10                            | <10                   | <10                  | <10                  |
| Mathematics | 04    | White                                       | 2010-11     | <10               | 84.3%                       | <10                            | <10                   | <10                  | <10                  |
| Mathematics | 04    | Male  | 2009-10     | <10               | 85.9%                       | <10                            | <10                   | <10                  | <10                  |
| Mathematics | 04    | Male  | 2010-11     | <10               | 84.3%                       | <10                            | <10                   | <10                  | <10                  |
| Mathematics | 06    | All Students                                | 2010-11     | <10               | 80.4%                       | <10                            | <10                   | <10                  | <10                  |
| Mathematics | 06    | White                                       | 2010-11     | <10               | 82.9%                       | <10                            | <10                   | <10                  | <10                  |
| Mathematics | 06    | Female                                      | 2010-11     | <10               | 76.8%                       | <10                            | <10                   | <10                  | <10                  |
| Mathematics | 07    | All Students                                | 2009-10     | <10               | 70.9%                       | <10                            | <10                   | <10                  | <10                  |
| Mathematics | 07    | Black or African American                   | 2009-10     | <10               | 61.9%                       | <10                            | <10                   | <10                  | <10                  |
| Mathematics | 07    | Female                                      | 2009-10     | <10               | 68.7%                       | <10                            | <10                   | <10                  | <10                  |
| Mathematics | 07    | Male  | 2009-10     | <10               | 72.2%                       | <10                            | <10                   | <10                  | <10                  |
| Mathematics | 08    | All Students                                | 2009-10     | <10               | 81.1%                       | <10                            | <10                   | <10                  | <10                  |
| Mathematics | 08    | All Students                                | 2010-11     | <10               | 79%                         | <10                            | <10                   | <10                  | <10                  |
| Mathematics | 08    | Asian, Native Hawaiian, or Pacific Islander | 2009-10     | <10               | 88.2%                       | <10                            | <10                   | <10                  | <10                  |
| Mathematics | 08    | Asian, Native Hawaiian, or Pacific Islander | 2010-11     | <10               | 90.9%                       | <10                            | <10                   | <10                  | <10                  |
| Mathematics | 08    | Black or African American                   | 2009-10     | <10               | 74.8%                       | <10                            | <10                   | <10                  | <10                  |
| Mathematics | 08    | Black or African American                   | 2010-11     | <10               | 72.7%                       | <10                            | <10                   | <10                  | <10                  |
| Mathematics | 08    | White                                       | 2009-10     | <10               | 83.9%                       | <10                            | <10                   | <10                  | <10                  |
| Mathematics | 08    | White                                       | 2010-11     | <10               | 82.1%                       | <10                            | <10                   | <10                  | <10                  |
| Mathematics | 08    | Female                                      | 2009-10     | <10               | 79.4%                       | <10                            | <10                   | <10                  | <10                  |
| Mathematics | 08    | Female                                      | 2010-11     | <10               | 76%                         | <10                            | <10                   | <10                  | <10                  |



### Combined Reports Data for Ingham ISD, East Lansing School District

#### Student Assessment Data - MI-Access : Functional Independence

| Subject     | Grade | Student Group                               | School Year | % Students Tested | State % Students Proficient | District % Students Proficient | % Surpassed (Level 1) | % Attained (Level 2) | % Emerging (Level 3) |
|-------------|-------|---|-------------|-------------------|-----------------------------|--------------------------------|-----------------------|----------------------|----------------------|
| Mathematics | 08    | Male  | 2009-10     | <10               | 82.1%                       | <10                            | <10                   | <10                  | <10                  |
| Mathematics | 08    | Male  | 2010-11     | <10               | 80.7%                       | <10                            | <10                   | <10                  | <10                  |
| Mathematics | 11    | All Students                                | 2009-10     | <10               | 71.8%                       | <10                            | <10                   | <10                  | <10                  |
| Mathematics | 11    | All Students                                | 2010-11     | <10               | 68.7%                       | <10                            | <10                   | <10                  | <10                  |
| Mathematics | 11    | Black or African American                   | 2010-11     | <10               | 49.7%                       | <10                            | <10                   | <10                  | <10                  |
| Mathematics | 11    | White                                       | 2009-10     | <10               | 78.9%                       | <10                            | <10                   | <10                  | <10                  |
| Mathematics | 11    | White                                       | 2010-11     | <10               | 75.9%                       | <10                            | <10                   | <10                  | <10                  |
| Mathematics | 11    | Female                                      | 2010-11     | <10               | 65.1%                       | <10                            | <10                   | <10                  | <10                  |
| Mathematics | 11    | Male  | 2009-10     | <10               | 75.8%                       | <10                            | <10                   | <10                  | <10                  |
| Mathematics | 11    | Male  | 2010-11     | <10               | 70.8%                       | <10                            | <10                   | <10                  | <10                  |
| Science     | 08    | All Students                                | 2009-10     | <10               | 52.2%                       | <10                            | <10                   | <10                  | <10                  |
| Science     | 08    | All Students                                | 2010-11     | <10               | 44.9%                       | <10                            | <10                   | <10                  | <10                  |
| Science     | 08    | Asian, Native Hawaiian, or Pacific Islander | 2009-10     | <10               | 44.4%                       | <10                            | <10                   | <10                  | <10                  |
| Science     | 08    | Asian, Native Hawaiian, or Pacific Islander | 2010-11     | <10               | 38.1%                       | <10                            | <10                   | <10                  | <10                  |
| Science     | 08    | Black or African American                   | 2009-10     | <10               | 34.8%                       | <10                            | <10                   | <10                  | <10                  |
| Science     | 08    | Black or African American                   | 2010-11     | <10               | 32.2%                       | <10                            | <10                   | <10                  | <10                  |
| Science     | 08    | White                                       | 2009-10     | <10               | 60.9%                       | <10                            | <10                   | <10                  | <10                  |
| Science     | 08    | White                                       | 2010-11     | <10               | 51.8%                       | <10                            | <10                   | <10                  | <10                  |
| Science     | 08    | Female                                      | 2009-10     | <10               | 50%                         | <10                            | <10                   | <10                  | <10                  |
| Science     | 08    | Female                                      | 2010-11     | <10               | 39.8%                       | <10                            | <10                   | <10                  | <10                  |
| Science     | 08    | Male  | 2009-10     | <10               | 53.5%                       | <10                            | <10                   | <10                  | <10                  |
| Science     | 08    | Male  | 2010-11     | <10               | 47.9%                       | <10                            | <10                   | <10                  | <10                  |
| Science     | 11    | All Students                                | 2009-10     | <10               | 70.8%                       | <10                            | <10                   | <10                  | <10                  |
| Science     | 11    | All Students                                | 2010-11     | <10               | 59.2%                       | <10                            | <10                   | <10                  | <10                  |
| Science     | 11    | Black or African American                   | 2010-11     | <10               | 31.4%                       | <10                            | <10                   | <10                  | <10                  |
| Science     | 11    | White                                       | 2009-10     | <10               | 78.6%                       | <10                            | <10                   | <10                  | <10                  |
| Science     | 11    | White                                       | 2010-11     | <10               | 70.5%                       | <10                            | <10                   | <10                  | <10                  |
| Science     | 11    | Female                                      | 2010-11     | <10               | 58.1%                       | <10                            | <10                   | <10                  | <10                  |

### Combined Reports Data for Ingham ISD, East Lansing School District

Student Assessment Data - MI-Access : Functional Independence

| Subject | Grade | Student Group | School Year | % Students Tested | State % Students Proficient | District % Students Proficient | % Surpassed (Level 1) | % Attained (Level 2) | % Emerging (Level 3) |
|---------|-------|---------------|-------------|-------------------|-----------------------------|--------------------------------|-----------------------|----------------------|----------------------|
| Science | 11    | Male          | 2009-10     | <10               | 73%                         | <10                            | <10                   | <10                  | <10                  |
| Science | 11    | Male          | 2010-11     | <10               | 59.8%                       | <10                            | <10                   | <10                  | <10                  |

### Combined Reports Data for Ingham ISD, East Lansing School District

#### Student Assessment Data - MI-Access : Supported Independence

| Subject               | Grade | Student Group                               | School Year | % Students Tested | State % Students Proficient | District % Students Proficient | % Surpassed (Level 1) | % Attained (Level 2) | % Emerging (Level 3) |
|-----------------------|-------|---|-------------|-------------------|-----------------------------|--------------------------------|-----------------------|----------------------|----------------------|
| English Language Arts | 03    | All Students                                | 2009-10     | <10               | 81.3%                       | <10                            | <10                   | <10                  | <10                  |
| English Language Arts | 03    | All Students                                | 2010-11     | <10               | 85.2%                       | <10                            | <10                   | <10                  | <10                  |
| English Language Arts | 03    | Two or More Races                           | 2010-11     | <10               | <10                         | <10                            | <10                   | <10                  | <10                  |
| English Language Arts | 03    | White                                       | 2009-10     | <10               | 80.6%                       | <10                            | <10                   | <10                  | <10                  |
| English Language Arts | 03    | White                                       | 2010-11     | <10               | 85.9%                       | <10                            | <10                   | <10                  | <10                  |
| English Language Arts | 03    | Male  | 2009-10     | <10               | 80.2%                       | <10                            | <10                   | <10                  | <10                  |
| English Language Arts | 03    | Male  | 2010-11     | <10               | 85%                         | <10                            | <10                   | <10                  | <10                  |
| English Language Arts | 04    | All Students                                | 2010-11     | <10               | 77.8%                       | <10                            | <10                   | <10                  | <10                  |
| English Language Arts | 04    | White                                       | 2010-11     | <10               | 77.8%                       | <10                            | <10                   | <10                  | <10                  |
| English Language Arts | 04    | Male  | 2010-11     | <10               | 78.1%                       | <10                            | <10                   | <10                  | <10                  |
| English Language Arts | 05    | All Students                                | 2009-10     | <10               | 72.4%                       | <10                            | <10                   | <10                  | <10                  |
| English Language Arts | 05    | Asian, Native Hawaiian, or Pacific Islander | 2009-10     | <10               | 64.7%                       | <10                            | <10                   | <10                  | <10                  |
| English Language Arts | 05    | White                                       | 2009-10     | <10               | 70.7%                       | <10                            | <10                   | <10                  | <10                  |
| English Language Arts | 05    | Female                                      | 2009-10     | <10               | 69.4%                       | <10                            | <10                   | <10                  | <10                  |
| English Language Arts | 05    | Male  | 2009-10     | <10               | 74.1%                       | <10                            | <10                   | <10                  | <10                  |
| English Language Arts | 06    | All Students                                | 2009-10     | <10               | 81.6%                       | <10                            | <10                   | <10                  | <10                  |
| English Language Arts | 06    | All Students                                | 2010-11     | <10               | 77.8%                       | <10                            | <10                   | <10                  | <10                  |
| English Language Arts | 06    | Asian, Native Hawaiian, or Pacific Islander | 2010-11     | <10               | 87.5%                       | <10                            | <10                   | <10                  | <10                  |
| English Language Arts | 06    | Hispanic or Latino                          | 2009-10     | <10               | 87.5%                       | <10                            | <10                   | <10                  | <10                  |

### Combined Reports Data for Ingham ISD, East Lansing School District

Student Assessment Data - MI-Access : Supported Independence

| Subject               | Grade | Student Group             | School Year | % Students Tested | State % Students Proficient | District % Students Proficient | % Surpassed (Level 1) | % Attained (Level 2) | % Emerging (Level 3) |
|-----------------------|-------|---------------------------|-------------|-------------------|-----------------------------|--------------------------------|-----------------------|----------------------|----------------------|
| English Language Arts | 06    | White                     | 2010-11     | <10               | 79.6%                       | <10                            | <10                   | <10                  | <10                  |
| English Language Arts | 06    | Female                    | 2009-10     | <10               | 80.9%                       | <10                            | <10                   | <10                  | <10                  |
| English Language Arts | 06    | Female                    | 2010-11     | <10               | 78.4%                       | <10                            | <10                   | <10                  | <10                  |
| English Language Arts | 06    | Male                      | 2010-11     | <10               | 77.5%                       | <10                            | <10                   | <10                  | <10                  |
| English Language Arts | 07    | All Students              | 2009-10     | <10               | 81.4%                       | <10                            | <10                   | <10                  | <10                  |
| English Language Arts | 07    | Hispanic or Latino        | 2009-10     | <10               | 65%                         | <10                            | <10                   | <10                  | <10                  |
| English Language Arts | 07    | Male                      | 2009-10     | <10               | 78.1%                       | <10                            | <10                   | <10                  | <10                  |
| English Language Arts | 08    | All Students              | 2009-10     | <10               | 79.6%                       | <10                            | <10                   | <10                  | <10                  |
| English Language Arts | 08    | All Students              | 2010-11     | <10               | 80.4%                       | <10                            | <10                   | <10                  | <10                  |
| English Language Arts | 08    | Black or African American | 2009-10     | <10               | 79.1%                       | <10                            | <10                   | <10                  | <10                  |
| English Language Arts | 08    | Black or African American | 2010-11     | <10               | 83.9%                       | <10                            | <10                   | <10                  | <10                  |
| English Language Arts | 08    | Hispanic or Latino        | 2010-11     | <10               | 64%                         | <10                            | <10                   | <10                  | <10                  |
| English Language Arts | 08    | White                     | 2009-10     | <10               | 79.8%                       | <10                            | <10                   | <10                  | <10                  |
| English Language Arts | 08    | Male                      | 2009-10     | <10               | 77.5%                       | <10                            | <10                   | <10                  | <10                  |
| English Language Arts | 08    | Male                      | 2010-11     | <10               | 78.1%                       | <10                            | <10                   | <10                  | <10                  |
| English Language Arts | 11    | All Students              | 2009-10     | <10               | 76.8%                       | <10                            | <10                   | <10                  | <10                  |
| English Language Arts | 11    | White                     | 2009-10     | <10               | 74.4%                       | <10                            | <10                   | <10                  | <10                  |
| English Language Arts | 11    | Female                    | 2009-10     | <10               | 74.7%                       | <10                            | <10                   | <10                  | <10                  |
| Mathematics           | 03    | All Students              | 2009-10     | <10               | 87.2%                       | <10                            | <10                   | <10                  | <10                  |
| Mathematics           | 03    | All Students              | 2010-11     | <10               | 87.5%                       | <10                            | <10                   | <10                  | <10                  |
| Mathematics           | 03    | Two or More Races         | 2010-11     | <10               | <10                         | <10                            | <10                   | <10                  | <10                  |
| Mathematics           | 03    | White                     | 2009-10     | <10               | 86.2%                       | <10                            | <10                   | <10                  | <10                  |

### Combined Reports Data for Ingham ISD, East Lansing School District

Student Assessment Data - MI-Access : Supported Independence

| Subject     | Grade | Student Group                               | School Year | % Students Tested | State % Students Proficient | District % Students Proficient | % Surpassed (Level 1) | % Attained (Level 2) | % Emerging (Level 3) |
|-------------|-------|---|-------------|-------------------|-----------------------------|--------------------------------|-----------------------|----------------------|----------------------|
| Mathematics | 03    | White                                       | 2010-11     | <10               | 88.2%                       | <10                            | <10                   | <10                  | <10                  |
| Mathematics | 03    | Male  | 2009-10     | <10               | 88.3%                       | <10                            | <10                   | <10                  | <10                  |
| Mathematics | 03    | Male  | 2010-11     | <10               | 86.4%                       | <10                            | <10                   | <10                  | <10                  |
| Mathematics | 04    | All Students                                | 2010-11     | <10               | 83.4%                       | <10                            | <10                   | <10                  | <10                  |
| Mathematics | 04    | White                                       | 2010-11     | <10               | 83.1%                       | <10                            | <10                   | <10                  | <10                  |
| Mathematics | 04    | Male  | 2010-11     | <10               | 82.3%                       | <10                            | <10                   | <10                  | <10                  |
| Mathematics | 05    | All Students                                | 2009-10     | <10               | 85.9%                       | <10                            | <10                   | <10                  | <10                  |
| Mathematics | 05    | Asian, Native Hawaiian, or Pacific Islander | 2009-10     | <10               | 88.2%                       | <10                            | <10                   | <10                  | <10                  |
| Mathematics | 05    | White                                       | 2009-10     | <10               | 85.1%                       | <10                            | <10                   | <10                  | <10                  |
| Mathematics | 05    | Female                                      | 2009-10     | <10               | 85.3%                       | <10                            | <10                   | <10                  | <10                  |
| Mathematics | 05    | Male  | 2009-10     | <10               | 86.1%                       | <10                            | <10                   | <10                  | <10                  |
| Mathematics | 06    | All Students                                | 2009-10     | <10               | 88.2%                       | <10                            | <10                   | <10                  | <10                  |
| Mathematics | 06    | All Students                                | 2010-11     | <10               | 85.9%                       | <10                            | <10                   | <10                  | <10                  |
| Mathematics | 06    | Asian, Native Hawaiian, or Pacific Islander | 2010-11     | <10               | 100%                        | <10                            | <10                   | <10                  | <10                  |
| Mathematics | 06    | Hispanic or Latino                          | 2009-10     | <10               | 82.6%                       | <10                            | <10                   | <10                  | <10                  |
| Mathematics | 06    | White                                       | 2010-11     | <10               | 88.1%                       | <10                            | <10                   | <10                  | <10                  |
| Mathematics | 06    | Female                                      | 2009-10     | <10               | 89%                         | <10                            | <10                   | <10                  | <10                  |
| Mathematics | 06    | Female                                      | 2010-11     | <10               | 84.1%                       | <10                            | <10                   | <10                  | <10                  |
| Mathematics | 06    | Male  | 2010-11     | <10               | 86.9%                       | <10                            | <10                   | <10                  | <10                  |
| Mathematics | 07    | All Students                                | 2009-10     | <10               | 87.2%                       | <10                            | <10                   | <10                  | <10                  |
| Mathematics | 07    | Hispanic or Latino                          | 2009-10     | <10               | 85%                         | <10                            | <10                   | <10                  | <10                  |
| Mathematics | 07    | Male  | 2009-10     | <10               | 86.1%                       | <10                            | <10                   | <10                  | <10                  |
| Mathematics | 08    | All Students                                | 2009-10     | <10               | 87.4%                       | <10                            | <10                   | <10                  | <10                  |
| Mathematics | 08    | All Students                                | 2010-11     | <10               | 88.1%                       | <10                            | <10                   | <10                  | <10                  |
| Mathematics | 08    | Black or African American                   | 2009-10     | <10               | 88%                         | <10                            | <10                   | <10                  | <10                  |
| Mathematics | 08    | Black or African American                   | 2010-11     | <10               | 88.5%                       | <10                            | <10                   | <10                  | <10                  |
| Mathematics | 08    | Hispanic or Latino                          | 2010-11     | <10               | 76%                         | <10                            | <10                   | <10                  | <10                  |
| Mathematics | 08    | White                                       | 2009-10     | <10               | 87.9%                       | <10                            | <10                   | <10                  | <10                  |
| Mathematics | 08    | Male  | 2009-10     | <10               | 86.3%                       | <10                            | <10                   | <10                  | <10                  |
| Mathematics | 08    | Male  | 2010-11     | <10               | 88.8%                       | <10                            | <10                   | <10                  | <10                  |

### Combined Reports Data for Ingham ISD, East Lansing School District

Student Assessment Data - MI-Access : Supported Independence

| Subject     | Grade | Student Group                               | School Year | % Students Tested | State % Students Proficient | District % Students Proficient | % Surpassed (Level 1) | % Attained (Level 2) | % Emerging (Level 3) |
|-------------|-------|---|-------------|-------------------|-----------------------------|--------------------------------|-----------------------|----------------------|----------------------|
| Mathematics | 11    | All Students                                | 2009-10     | <10               | 83.2%                       | <10                            | <10                   | <10                  | <10                  |
| Mathematics | 11    | White                                       | 2009-10     | <10               | 83.1%                       | <10                            | <10                   | <10                  | <10                  |
| Mathematics | 11    | Female                                      | 2009-10     | <10               | 78.7%                       | <10                            | <10                   | <10                  | <10                  |
| Science     | 05    | All Students                                | 2009-10     | <10               | 76.1%                       | <10                            | <10                   | <10                  | <10                  |
| Science     | 05    | Asian, Native Hawaiian, or Pacific Islander | 2009-10     | <10               | 68.8%                       | <10                            | <10                   | <10                  | <10                  |
| Science     | 05    | White                                       | 2009-10     | <10               | 76.4%                       | <10                            | <10                   | <10                  | <10                  |
| Science     | 05    | Female                                      | 2009-10     | <10               | 75.9%                       | <10                            | <10                   | <10                  | <10                  |
| Science     | 05    | Male  | 2009-10     | <10               | 76.2%                       | <10                            | <10                   | <10                  | <10                  |
| Science     | 08    | All Students                                | 2009-10     | <10               | 74.3%                       | <10                            | <10                   | <10                  | <10                  |
| Science     | 08    | All Students                                | 2010-11     | <10               | 73.5%                       | <10                            | <10                   | <10                  | <10                  |
| Science     | 08    | Black or African American                   | 2009-10     | <10               | 72.9%                       | <10                            | <10                   | <10                  | <10                  |
| Science     | 08    | Black or African American                   | 2010-11     | <10               | 77.8%                       | <10                            | <10                   | <10                  | <10                  |
| Science     | 08    | Hispanic or Latino                          | 2010-11     | <10               | 58.3%                       | <10                            | <10                   | <10                  | <10                  |
| Science     | 08    | White                                       | 2009-10     | <10               | 74.8%                       | <10                            | <10                   | <10                  | <10                  |
| Science     | 08    | Male  | 2009-10     | <10               | 70%                         | <10                            | <10                   | <10                  | <10                  |
| Science     | 08    | Male  | 2010-11     | <10               | 72.3%                       | <10                            | <10                   | <10                  | <10                  |
| Science     | 11    | All Students                                | 2009-10     | <10               | 77.7%                       | <10                            | <10                   | <10                  | <10                  |
| Science     | 11    | White                                       | 2009-10     | <10               | 77.9%                       | <10                            | <10                   | <10                  | <10                  |
| Science     | 11    | Female                                      | 2009-10     | <10               | 75.8%                       | <10                            | <10                   | <10                  | <10                  |

### Combined Reports Data for Ingham ISD, East Lansing School District

#### Student Assessment Data - MI-Access : Participation

| Subject               | Grade | Student Group | School Year | % Students Tested | State % Students Proficient | District % Students Proficient | % Surpassed (Level 1) | % Attained (Level 2) | % Emerging (Level 3) |
|-----------------------|-------|---------------|-------------|-------------------|-----------------------------|--------------------------------|-----------------------|----------------------|----------------------|
| English Language Arts | 11    | All Students  | 2010-11     | <10               | 68.7%                       | <10                            | <10                   | <10                  | <10                  |
| English Language Arts | 11    | White         | 2010-11     | <10               | 71.9%                       | <10                            | <10                   | <10                  | <10                  |
| English Language Arts | 11    | Male          | 2010-11     | <10               | 73%                         | <10                            | <10                   | <10                  | <10                  |
| Mathematics           | 11    | All Students  | 2010-11     | <10               | 56.7%                       | <10                            | <10                   | <10                  | <10                  |
| Mathematics           | 11    | White         | 2010-11     | <10               | 55.7%                       | <10                            | <10                   | <10                  | <10                  |
| Mathematics           | 11    | Male          | 2010-11     | <10               | 59.8%                       | <10                            | <10                   | <10                  | <10                  |
| Science               | 11    | All Students  | 2010-11     | <10               | 44.8%                       | <10                            | <10                   | <10                  | <10                  |
| Science               | 11    | White         | 2010-11     | <10               | 46.3%                       | <10                            | <10                   | <10                  | <10                  |
| Science               | 11    | Male          | 2010-11     | <10               | 47.5%                       | <10                            | <10                   | <10                  | <10                  |

**Combined Reports Data for Ingham ISD, East Lansing School District**

Student Assessment Data - MEAP-Access

| <b>Subject</b> | <b>Grade</b> | <b>Student Group</b> | <b>School Year</b> | <b>% Students Tested</b> | <b>State % Students Proficient</b> | <b>District % Students Proficient</b> | <b>% Level 1</b> | <b>% Level 2</b> | <b>% Level 3</b> |
|----------------|--------------|----------------------|--------------------|--------------------------|------------------------------------|---------------------------------------|------------------|------------------|------------------|
|----------------|--------------|----------------------|--------------------|--------------------------|------------------------------------|---------------------------------------|------------------|------------------|------------------|



## Combined Reports Data for Ingham ISD, East Lansing School District

### AYP Detail Data

| Student Group                               | Location | Subject                         | % Tested (Goal 95%) | % Proficient for AYP* |
|---|----------|---------------------------------|---------------------|-----------------------|
| All Students                                | State    | English Language Arts / Reading | 98.9%               | 93.7%                 |
| All Students                                | State    | Mathematics                     | 98.6%               | 94.4%                 |
| All Students                                | District | English Language Arts / Reading | 100.6%              | 96.7%                 |
| All Students                                | District | Mathematics                     | 99.7%               | 97.4%                 |
| American Indian or Alaska Native            | State    | English Language Arts / Reading | 98.4%               | 92.1%                 |
| American Indian or Alaska Native            | State    | Mathematics                     | 98.1%               | 93.4%                 |
| American Indian or Alaska Native            | District | English Language Arts / Reading | <30                 | <30                   |
| American Indian or Alaska Native            | District | Mathematics                     | <30                 | <30                   |
| Asian, Native Hawaiian, or Pacific Islander | State    | English Language Arts / Reading | 100.5%              | 96.5%                 |
| Asian, Native Hawaiian, or Pacific Islander | State    | Mathematics                     | 99.3%               | 97.4%                 |
| Asian, Native Hawaiian, or Pacific Islander | District | English Language Arts / Reading | 106.2%              | 99.3%                 |
| Asian, Native Hawaiian, or Pacific Islander | District | Mathematics                     | 99.4%               | 100%                  |
| Black or African American                   | State    | English Language Arts / Reading | 96.8%               | 87.7%                 |
| Black or African American                   | State    | Mathematics                     | 96.4%               | 88.9%                 |
| Black or African American                   | District | English Language Arts / Reading | 99.3%               | 93.9%                 |
| Black or African American                   | District | Mathematics                     | 99.3%               | 94.3%                 |
| Hispanic or Latino                          | State    | English Language Arts / Reading | 98.8%               | 91.7%                 |
| Hispanic or Latino                          | State    | Mathematics                     | 98.1%               | 93.4%                 |
| Hispanic or Latino                          | District | English Language Arts / Reading | 98.6%               | 96.6%                 |
| Hispanic or Latino                          | District | Mathematics                     | 98.6%               | 98.3%                 |
| Two or More Races                           | State    | English Language Arts / Reading | 99.2%               | 94.1%                 |
| Two or More Races                           | State    | Mathematics                     | 99%                 | 94.9%                 |
| Two or More Races                           | District | English Language Arts / Reading | 100.8%              | 93.3%                 |
| Two or More Races                           | District | Mathematics                     | 100.8%              | 96.6%                 |
| White                                       | State    | English Language Arts / Reading | 99.4%               | 95.1%                 |
| White                                       | State    | Mathematics                     | 99.2%               | 95.6%                 |
| White                                       | District | English Language Arts / Reading | 100.4%              | 97.5%                 |
| White                                       | District | Mathematics                     | 99.9%               | 97.9%                 |
| Economically Disadvantaged                  | State    | English Language Arts / Reading | 98.4%               | 90.4%                 |
| Economically Disadvantaged                  | State    | Mathematics                     | 98.1%               | 91.9%                 |
| Economically Disadvantaged                  | District | English Language Arts / Reading | 99.4%               | 94.2%                 |
| Economically Disadvantaged                  | District | Mathematics                     | 99.4%               | 94.9%                 |
| Limited English Proficient                  | State    | English Language Arts / Reading | 99%                 | 85.3%                 |
| Limited English Proficient                  | State    | Mathematics                     | 98.2%               | 91.2%                 |
| Limited English Proficient                  | District | English Language Arts / Reading | 97.5%               | 94.7%                 |
| Limited English Proficient                  | District | Mathematics                     | 98.8%               | 100%                  |
| Students with Disabilities                  | State    | English Language Arts / Reading | 97.8%               | 72.9%                 |
| Students with Disabilities                  | State    | Mathematics                     | 97.6%               | 78.9%                 |

**Combined Reports Data for Ingham ISD, East Lansing School District**

## AYP Detail Data

| <b>Student Group</b>       | <b>Location</b> | <b>Subject</b>                  | <b>% Tested (Goal 95%)</b> | <b>% Proficient for AYP*</b> |
|----------------------------|-----------------|---------------------------------|----------------------------|------------------------------|
| Students with Disabilities | District        | English Language Arts / Reading | 99.4%                      | 85.1%                        |
| Students with Disabilities | District        | Mathematics                     | 99.4%                      | 87.8%                        |

Note: 1100 Recently arrived LEP students took part in the State's ELPA instead of the MEAP/MME/MI-Access.

## Combined Reports Data for Ingham ISD, East Lansing School District

### AYP Detail Data - Graduation Rate

| Student Group                               | Location | Graduation Rate (High Schools only) (Goal 80%) |
|---|----------|--|
| All Students                                | State    | 75.96%   |
| All Students                                | District | 81.56%   |
| American Indian or Alaska Native            | State    | 65.87%   |
| American Indian or Alaska Native            | District | <10  |
| Asian, Native Hawaiian, or Pacific Islander | State    | 87.07%   |
| Asian, Native Hawaiian, or Pacific Islander | District | 81.48%   |
| Black or African American                   | State    | 57.97%   |
| Black or African American                   | District | 80.43%   |
| Hispanic or Latino                          | State    | 63.52%   |
| Hispanic or Latino                          | District | 70.59%   |
| Two or More Races                           | State    | 66.55%   |
| White                                       | State    | 82.04%   |
| White                                       | District | 83.6%  |
| Economically Disadvantaged                  | State    | 66.59%   |
| Economically Disadvantaged                  | District | 66.1%  |
| Limited English Proficient                  | State    | 83.13%   |
| Limited English Proficient                  | District | <10  |
| Students with Disabilities                  | State    | 58.68%   |
| Students with Disabilities                  | District | 55.26%   |

\* All data based on students enrolled for a full academic year.

## Combined Reports Data for Ingham ISD, East Lansing School District

### AYP Detail Data - Attendance Rate

| <b>Student Group</b>                        | <b>Location</b> | <b>Attendance Rate (Goal 90%)</b> |
|---|-----------------|-----------------------------------|
| All Students                                | State           | 94.9%                             |
| All Students                                | District        | 95.5%                             |
| American Indian or Alaska Native            | State           | 94%                               |
| American Indian or Alaska Native            | District        | 93%                               |
| Asian, Native Hawaiian, or Pacific Islander | State           | 96.6%                             |
| Asian, Native Hawaiian, or Pacific Islander | District        | 95.7%                             |
| Black or African American                   | State           | 91.9%                             |
| Black or African American                   | District        | 95.5%                             |
| Hispanic or Latino                          | State           | 94.2%                             |
| Hispanic or Latino                          | District        | 94.8%                             |
| Two or More Races                           | State           | 94.7%                             |
| Two or More Races                           | District        | 93.9%                             |
| White                                       | State           | 95.6%                             |
| White                                       | District        | 95.6%                             |
| Economically Disadvantaged                  | State           | 93.4%                             |
| Economically Disadvantaged                  | District        | 94.5%                             |
| Limited English Proficient                  | State           | 94.8%                             |
| Limited English Proficient                  | District        | 95.6%                             |
| Students with Disabilities                  | State           | 93.4%                             |
| Students with Disabilities                  | District        | 94.3%                             |

\* All data based on students enrolled for a full academic year.

### Combined Reports Data for Ingham ISD, East Lansing School District

#### Michigan Annual AYP Objectives for Reading/ELA

| School Year | Grade 3 | Grade 4 | Grade 5 | Grade 6 | Grade 7 | Grade 8 | Grade 11 |
|-------------|---------|---------|---------|---------|---------|---------|----------|
| 2001-02     |         | 38%     |         |         | 31%     |         | 42%      |
| 2002-03     |         | 38%     |         |         | 31%     |         | 42%      |
| 2003-04     |         | 38%     |         |         | 31%     |         | 42%      |
| 2004-05     |         | 48%     |         |         | 43%     |         | 52%      |
| 2005-06     | 50%     | 48%     | 46%     | 45%     | 43%     | 41%     | 52%      |
| 2006-07     | 50%     | 48%     | 46%     | 45%     | 43%     | 41%     | 52%      |
| 2007-08     | 60%     | 59%     | 57%     | 56%     | 54%     | 53%     | 61%      |
| 2008-09     | 60%     | 59%     | 57%     | 56%     | 54%     | 53%     | 61%      |
| 2009-10     | 70%     | 69%     | 68%     | 67%     | 66%     | 65%     | 71%      |
| 2010-11     | 78%     | 77%     | 76%     | 75%     | 74%     | 73%     | 79%      |
| 2011-12     | 86%     | 85%     | 84%     | 83%     | 82%     | 82%     | 86%      |
| 2012-13     | 93%     | 92%     | 92%     | 91%     | 91%     | 91%     | 93%      |
| 2013-14     | 100%    | 100%    | 100%    | 100%    | 100%    | 100%    | 100%     |

### Combined Reports Data for Ingham ISD, East Lansing School District

#### Michigan Annual AYP Objectives for Mathematics

| School Year | Grade 3 | Grade 4 | Grade 5 | Grade 6 | Grade 7 | Grade 8 | Grade 11 |
|-------------|---------|---------|---------|---------|---------|---------|----------|
| 2001-02     |         | 47%     |         |         |         | 31%     | 33%      |
| 2002-03     |         | 47%     |         |         |         | 31%     | 33%      |
| 2003-04     |         | 47%     |         |         |         | 31%     | 33%      |
| 2004-05     |         | 56%     |         |         |         | 43%     | 44%      |
| 2005-06     | 59%     | 56%     | 53%     | 50%     | 46%     | 43%     | 44%      |
| 2006-07     | 59%     | 56%     | 53%     | 50%     | 46%     | 43%     | 44%      |
| 2007-08     | 67%     | 65%     | 62%     | 60%     | 57%     | 54%     | 55%      |
| 2008-09     | 67%     | 65%     | 62%     | 60%     | 57%     | 54%     | 55%      |
| 2009-10     | 67%     | 65%     | 62%     | 60%     | 57%     | 54%     | 55%      |
| 2010-11     | 75%     | 74%     | 71%     | 70%     | 67%     | 66%     | 67%      |
| 2011-12     | 83%     | 82%     | 81%     | 80%     | 78%     | 77%     | 78%      |
| 2012-13     | 91%     | 91%     | 90%     | 90%     | 89%     | 89%     | 89%      |
| 2013-14     | 100%    | 100%    | 100%    | 100%    | 100%    | 100%    | 100%     |

## Combined Reports Data for Ingham ISD, East Lansing School District

### District AYP Status

| AYP ELA/Reading Status | AYP Mathematics Status | AYP Overall Status | District Improvement Status | Years in Improvement |
|------------------------|------------------------|--------------------|-----------------------------|----------------------|
| Met                    | Met                    | Met                | N/A                         | 0                    |

% of Districts making AYP: 86.9%  
 % of Districts in School Improvement status: 3.7%  
 % of Districts in Corrective Action status: 1.3%  
 % of Districts in Restructuring status: 2.2%  
 % of Title I Districts making AYP: 91.2%  
 % of Title I Districts in School Improvement status: 1.3%  
 % of Title I Districts in Corrective Action status: 0.3%  
 % of Title I Districts in Restructuring status: 1.9%

### Combined Reports Data for Ingham ISD, East Lansing School District

#### Schools in District AYP Status

| School/ Building             | Title 1 Status | AYP ELA/Reading Status | AYP Mathematics Status | AYP Overall Status | Education Yes Report Card Grade | School Improvement Status | Years in Improvement |
|------------------------------|----------------|------------------------|------------------------|--------------------|---------------------------------|---------------------------|----------------------|
| Donley Elementary School     | Yes            | Met                    | Met                    | Met                | A                               | N/A                       | 0                    |
| East Lansing High School     | No             | Met                    | Met                    | Met                | A                               | N/A                       | 0                    |
| Glencairn School             | No             | Met                    | Met                    | Met                | A                               | N/A                       | 0                    |
| MacDonald Middle School      | Yes            | Met                    | Met                    | Met                | A                               | N/A                       | 0                    |
| Marble School                | No             | Met                    | Met                    | Met                | A                               | N/A                       | 0                    |
| Pinecrest School             | No             | Met                    | Met                    | Met                | A                               | N/A                       | 0                    |
| Red Cedar School             | Yes            | Met                    | Met                    | Met                | A                               | N/A                       | 0                    |
| Whitehills Elementary School | Yes            | Met                    | Met                    | Met                | A                               | N/A                       | 0                    |

% of Schools making AYP: 100%

% of Schools in School Improvement status: 0%

% of Schools in Corrective Action status: 0%

% of Schools in Restructuring status: 0%

% of Title I Schools making AYP: 100%

% of Title I Schools in School Improvement status: 0%

% of Title I Schools in Corrective Action status: 0%

% of Title I Schools in Restructuring status: 0%



**Combined Reports Data for Ingham ISD, East Lansing School District**

## Teacher Quality Data

|  | <b>Other</b> | <b>B.A.</b> | <b>M.A.</b> | <b>Ph.D</b> |
|--|--------------|-------------|-------------|-------------|
| Professional Qualifications of All Public Elementary and Secondary School Teachers in the District | 0            | 71          | 148         | 2           |

Professional Qualifications are defined by the State and may include information such as the degrees of public school teachers (e.g., percentage of teachers with Bachelors Degrees or Masters Degrees) or the percentage of fully certified teachers

**Combined Reports Data for Ingham ISD, East Lansing School District**

## Teacher Quality Data

|  | <b>Certification Percent</b> |
|--|------------------------------|
| Percentage of Public Elementary and Secondary School Teachers in the District with Emergency Certification | 2.7%                         |

**Combined Reports Data for Ingham ISD, East Lansing School District**

## Teacher Quality Data

|   | <b>District Aggregate</b> | <b>High-Poverty Schools</b> | <b>Low-Poverty Schools</b> |
|---|---------------------------|-----------------------------|----------------------------|
| Percentage of Core Academic Subject Elementary and Secondary School Classes not Taught by Highly Qualified Teachers | 0%                        |                             | 0%                         |

## Combined Reports Data for Ingham ISD, East Lansing School District

### NAEP 2009 Grade 4 Mathematics Results

| Reporting Group                           | Percent of Students | Percent below Basic | Percent Basic | Percent Proficient | Percent Advanced |
|---|---------------------|---------------------|---------------|--------------------|------------------|
| All Students                              | 100                 | 22                  | 43            | 30                 | 5                |
| Male                                      | 50                  | 22                  | 41            | 30                 | 7                |
| Female                                    | 50                  | 22                  | 45            | 29                 | 4                |
| National Lunch Program Eligibility        | 43                  | 36                  | 47            | 16                 | 1                |
| Eligible                                  | 56                  | 11                  | 40            | 40                 | 9                |
| Not Eligible                              | ‡                   | ‡                   | ‡             | ‡                  | ‡                |
| Info not available                        |                     |                     |               |                    |                  |
| Race Ethnicity                            |                     |                     |               |                    |                  |
| White                                     | 71                  | 14                  | 43            | 37                 | 6                |
| Black                                     | 20                  | 52                  | 39            | 9                  | 0                |
| Hispanic                                  | 5                   | 29                  | 51            | 19                 | 1                |
| Asian Amer/Pacif Isl                      | 3                   | 13                  | 32            | 36                 | 19               |
| American Indian                           | 1                   | ‡                   | ‡             | ‡                  | ‡                |
| Unclassified                              | 1                   | ‡                   | ‡             | ‡                  | ‡                |
| Student classified as having a disability | 12                  | 42                  | 39            | 17                 | 2                |
| SD  | 88                  | 19                  | 44            | 31                 | 6                |
| Not SD                                    |                     |                     |               |                    |                  |
| Student is an English Language Learner    | 3                   | 48                  | 40            | 11                 | 1                |
| ELL                                       | 97                  | 21                  | 43            | 31                 | 5                |
| Not ELL                                   |                     |                     |               |                    |                  |

‡ Reporting Standards not met.

Note: Observed differences are not necessarily statistically significant. Detail may not sum to total because of rounding.

SOURCE: U.S. Department of Education. Institute for Education Sciences. National Center for Education Statistics. National Assessment Program (NAEP) 2009 Mathematics Achievement.

## Combined Reports Data for Ingham ISD, East Lansing School District

### NAEP 2009 Grade 8 Mathematics Results

| Reporting Group                           | Percent of Students | Percent below Basic | Percent Basic | Percent Proficient | Percent Advanced |
|---|---------------------|---------------------|---------------|--------------------|------------------|
| All Students                              | 100                 | 32                  | 37            | 24                 | 7                |
| Male                                      | 51                  | 31                  | 37            | 24                 | 8                |
| Female                                    | 49                  | 33                  | 38            | 24                 | 5                |
| National Lunch Program Eligibility        | 38                  | 50                  | 37            | 12                 | 1                |
| Eligible                                  | 62                  | 21                  | 38            | 31                 | 10               |
| Not Eligible                              | ‡                   | ‡                   | ‡             | ‡                  | ‡                |
| Info not available                        |                     |                     |               |                    |                  |
| Race Ethnicity                            |                     |                     |               |                    |                  |
| White                                     | 74                  | 23                  | 40            | 29                 | 8                |
| Black                                     | 18                  | 68                  | 27            | 4                  | 1                |
| Hispanic                                  | 4                   | 38                  | 45            | 15                 | 2                |
| Asian Amer/Pacif Isl                      | 2                   | 11                  | 30            | 31                 | 28               |
| American Indian                           | 1                   | ‡                   | ‡             | ‡                  | ‡                |
| Unclassified                              | ‡                   | ‡                   | ‡             | ‡                  | ‡                |
| Student classified as having a disability | 10                  | 75                  | 22            | 2                  | 1                |
| SD  | 90                  | 27                  | 39            | 27                 | 7                |
| Not SD                                    |                     |                     |               |                    |                  |
| Student is an English Language Learner    | 2                   | 58                  | 32            | 10                 | 0                |
| ELL                                       | 98                  | 32                  | 37            | 24                 | 7                |
| Not ELL                                   |                     |                     |               |                    |                  |

‡ Reporting Standards not met.

NOTE: Detail may not sum to totals because of rounding. Some apparent differences between estimates may not be statistically significant.

SOURCE: U.S. Department of Education. Institute for Education Sciences. National Center for Education Statistics. National Assessment Program (NAEP) 2009 Mathematics Achievement.

## Combined Reports Data for Ingham ISD, East Lansing School District

### NAEP 2009 Grade 4 Reading Results

| Reporting Group                           | Percent of Students | Percent below Basic | Percent Basic | Percent Proficient | Percent Advanced |
|---|---------------------|---------------------|---------------|--------------------|------------------|
| All Students                              | 100                 | 36                  | 34            | 23                 | 6                |
| Male                                      | 50                  | 39                  | 35            | 21                 | 5                |
| Female                                    | 50                  | 32                  | 34            | 26                 | 8                |
| National Lunch Program Eligibility        | 43                  |                     | 33            | 13                 | 2                |
| Eligible                                  | 57                  | 52                  | 36            | 31                 | 10               |
| Not Eligible                              | #                   | 24                  | ‡             | ‡                  | ‡                |
| Info not available                        |                     | ‡                   |               |                    |                  |
| Race Ethnicity                            |                     |                     |               |                    |                  |
| White                                     | 71                  | 28                  | 36            | 28                 | 8                |
| Black                                     | 19                  | 65                  | 26            | 7                  | 1                |
| Hispanic                                  | 5                   | 49                  | 34            | 15                 | 2                |
| Asian Amer/Pacif Isl                      | 3                   | 21                  | 37            | 25                 | 17               |
| American Indian                           | 1                   | ‡                   | ‡             | ‡                  | ‡                |
| Unclassified                              | 1                   | ‡                   | ‡             | ‡                  | ‡                |
| Student classified as having a disability | 10                  | 66                  | 24            | 8                  | 3                |
| SD  | 90                  | 32                  | 36            | 25                 | 7                |
| Not SD                                    |                     |                     |               |                    |                  |
| Student is an English Language Learner    | 3                   | 65                  | 26            | 9                  | 1                |
| ELL                                       | 97                  | 35                  | 35            | 24                 | 7                |
| Not ELL                                   |                     |                     |               |                    |                  |

# Rounds to zero

‡ Reporting Standards not met.

NOTE: Detail may not sum to totals because of rounding. Some apparent differences between estimates may not be statistically significant.

SOURCE: U.S. Department of Education, Institute of Education Sciences, National Center for Education Statistics, National Assessment of Educational Progress (NAEP), 2009 Reading Assessment.

## Combined Reports Data for Ingham ISD, East Lansing School District

### NAEP 2009 Grade 8 Reading Results

| Reporting Group                           | Percent of Students | Percent below Basic | Percent Basic | Percent Proficient | Percent Advanced |
|---|---------------------|---------------------|---------------|--------------------|------------------|
| All Students                              | 100                 | 28                  | 41            | 28                 | 3                |
| Male                                      | 51                  | 33                  | 42            | 23                 | 2                |
| Female                                    | 49                  | 23                  | 41            | 32                 | 4                |
| National Lunch Program Eligibility        | 37                  | 44                  | 41            | 14                 | 1                |
| Eligible                                  | 62                  | 18                  | 42            | 36                 | 4                |
| Not Eligible                              | ‡                   | ‡                   | ‡             | ‡                  | ‡                |
| Info not available                        |                     |                     |               |                    |                  |
| Race Ethnicity                            |                     |                     |               |                    |                  |
| White                                     | 74                  | 21                  | 32            | 32                 | 3                |
| Black                                     | 18                  | 54                  | 37            | 9                  | #                |
| Hispanic                                  | 4                   | 40                  | 34            | 24                 | 2                |
| Asian Amer/Pacif Isl                      | 2                   | ‡                   | ‡             | ‡                  | ‡                |
| American Indian                           | 1                   | ‡                   | ‡             | ‡                  | ‡                |
| Unclassified                              | 1                   | ‡                   | ‡             | ‡                  | ‡                |
| Student classified as having a disability | 9                   | 73                  | 22            | 4                  | #                |
| SD  | 91                  | 23                  | 43            | 30                 | 3                |
| Not SD                                    |                     |                     |               |                    |                  |
| Student is an English Language Learner    | 2                   | 60                  | 33            | 8                  | #                |
| ELL                                       | 98                  | 27                  | 42            | 28                 | 3                |
| Not ELL                                   |                     |                     |               |                    |                  |

# Rounds to zero

‡ Reporting Standards not met.

NOTE: Detail may not sum to totals because of rounding. Some apparent differences between estimates may not be statistically significant.

SOURCE: U.S. Department of Education, Institute of Education Sciences, National Center for Education Statistics, National Assessment of Educational Progress (NAEP), 2009 Reading Assessment.

**Combined Reports Data for Ingham ISD, East Lansing School District**

| <b>Grade</b> | <b>Subject</b>  | <b>Participation Rate for Students with Disabilities</b> | <b>Standard Error</b> | <b>Participation Rate for IEP Students</b> | <b>Standard Error</b> | <b>Participation Rate for Limited English Proficient Students</b> | <b>Standard Error</b> |
|--------------|-----------------|--|-----------------------|--|-----------------------|---|-----------------------|
| 4            | Math<br>Reading | 82.08<br>72.05   | 2.771<br>2.592        | 81.98<br>72.01                             | 2.786<br>2.63         | 91.89<br>81.16  | 3.063<br>3.53         |
| 8            | Math<br>Reading | 76.39<br>70.72   | 2.561<br>3.239        | 76.21<br>70.46                             | 2.578<br>3.298        | 93.13<br>85.15  | 4.12<br>4.505         |